

FAT10 Polyclonal Antibody

Catalog No :	YT5678
Reactivity :	Human;Rat;Mouse;
Applications :	WB;ELISA
Target :	FAT10
Gene Name :	UBD
Protein Name :	Ubiquitin D
Human Gene Id :	10537
Human Swiss Prot No :	O15205
Mouse Swiss Prot No :	P63072
Immunogen :	Synthesized peptide derived from the Internal region of human FAT10.
Specificity :	FAT10 Polyclonal Antibody detects endogenous levels of FAT10 protein.
Formulation :	Liquid in PBS containing 50% glycerol, 0.5% BSA and 0.02% sodium azide.
Source :	Polyclonal, Rabbit,IgG
Dilution :	WB 1:500 - 1:2000. ELISA: 1:10000. Not yet tested in other applications.
Purification :	The antibody was affinity-purified from rabbit antiserum by affinity-chromatography using epitope-specific immunogen.
Concentration :	1 mg/ml
Storage Stability :	-15°C to -25°C/1 year(Do not lower than -25°C)
Observed Band :	18kD

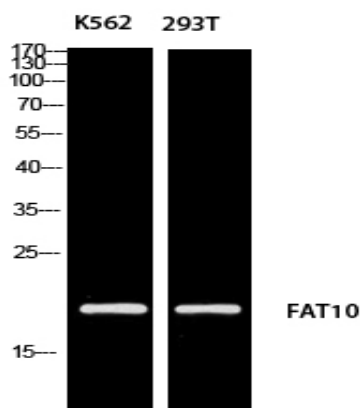
Background : similarity:Contains 2 ubiquitin-like domains.,subunit:Interacts with MAD2.,

Function : similarity:Contains 2 ubiquitin-like domains.,subunit:Interacts with MAD2.,

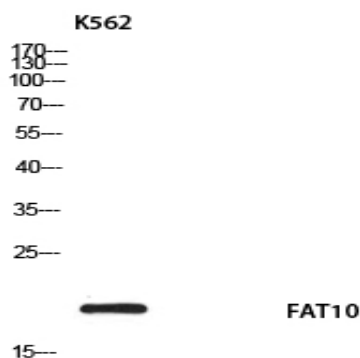
Subcellular Location : Nucleus . Cytoplasm . Accumulates in aggresomes under proteasome inhibition conditions.

Expression : Constitutively expressed in mature dendritic cells and B-cells. Mostly expressed in the reticuloendothelial system (e.g. thymus, spleen), the gastrointestinal system, kidney, lung and prostate gland.

Products Images



Western blot analysis of K562 293T using FAT10 antibody. Antibody was diluted at 1:1000. Secondary antibody(catalog#:RS0002) was diluted at 1:20000



Western blot analysis of K562 using FAT10 antibody. Antibody was diluted at 1:1000. Secondary antibody(catalog#:RS0002) was diluted at 1:20000