

ASAH3L Polyclonal Antibody

Catalog No :	YT5673
Reactivity :	Human;Mouse;Monkey
Applications :	WB;IHC;IF;ELISA
Target :	ASAH3L
Fields :	>>Sphingolipid metabolism;>>Metabolic pathways;>>Sphingolipid signaling pathway
Gene Name :	ACER2
Protein Name :	Alkaline ceramidase 2
Human Gene Id :	340485
Human Swiss Prot No :	Q5QJU3
Mouse Gene Id :	230379
Mouse Swiss Prot No :	Q8VD53
Immunogen :	Synthesized peptide derived from ASAH3L . at AA range: 50-130
Specificity :	ASAH3L Polyclonal Antibody detects endogenous levels of ASAH3L protein.
Formulation :	Liquid in PBS containing 50% glycerol, 0.5% BSA and 0.02% sodium azide.
Source :	Polyclonal, Rabbit,IgG
Dilution :	WB 1:500 - 1:2000. IHC: 1:100-1:300. ELISA: 1:10000.. IF 1:50-200
Purification :	The antibody was affinity-purified from rabbit antiserum by affinity-chromatography using epitope-specific immunogen.
Concentration :	1 mg/ml

Storage Stability : -15°C to -25°C/1 year(Do not lower than -25°C)

Observed Band : 33kD

Cell Pathway : Sphingolipid metabolism;

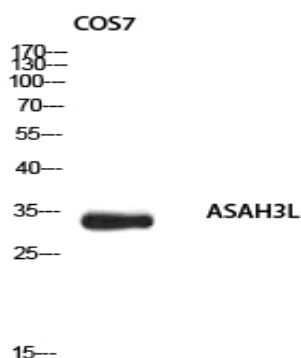
Background : The sphingolipid metabolite sphingosine-1-phosphate promotes cell proliferation and survival, whereas its precursor, sphingosine, has the opposite effect. The ceramidase ACER2 hydrolyzes very long chain ceramides to generate sphingosine (Xu et al., 2006 [PubMed 16940153]).[supplied by OMIM, Jul 2010],

Function : catalytic activity:N-acylsphingosine + H(2)O = a carboxylate + sphingosine.,function:Hydrolyzes the sphingolipid ceramide into sphingosine and free fatty acid.,similarity:Belongs to the alkaline ceramidase family.,

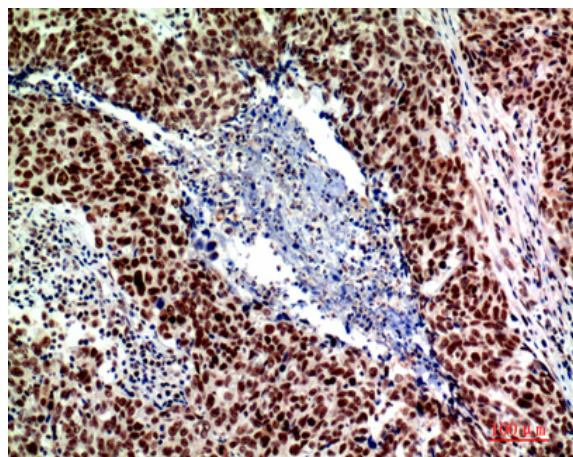
Subcellular Location : Golgi apparatus membrane ; Multi-pass membrane protein .

Expression : Highly expressed in placenta.

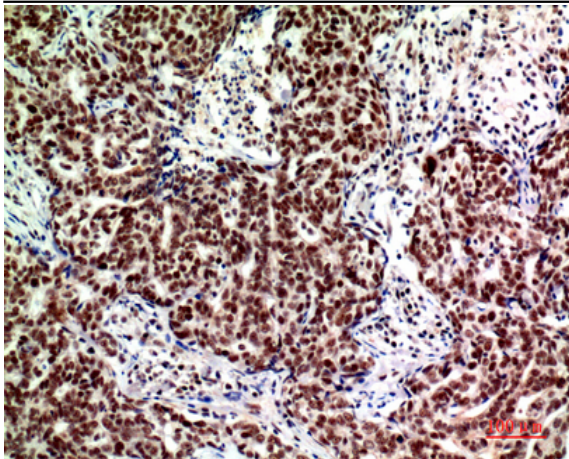
Products Images



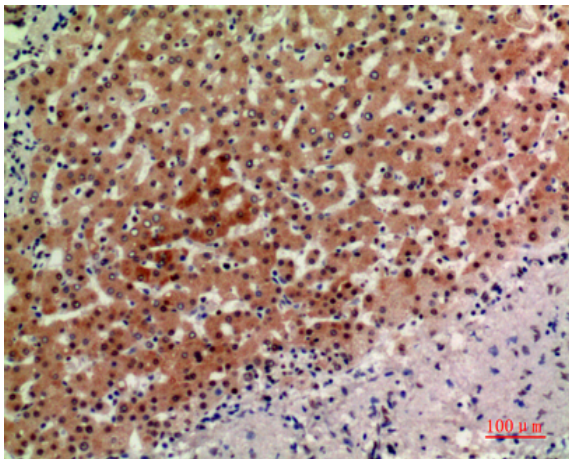
Western blot analysis of COS7 using ASA3L antibody.
Secondary antibody(catalog#:RS0002) was diluted at 1:20000



Immunohistochemical analysis of paraffin-embedded human breast-cancer, antibody was diluted at 1:200



Immunohistochemical analysis of paraffin-embedded human-breast-cancer, antibody was diluted at 1:200



Immunohistochemical analysis of paraffin-embedded human-liver, antibody was diluted at 1:200