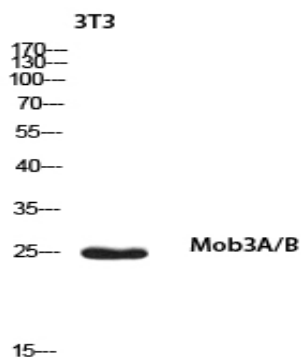


Mob3A/B Polyclonal Antibody

Catalog No :	YT5667
Reactivity :	Human;Mouse
Applications :	WB;IHC;IF;ELISA
Target :	Mob3A/B
Gene Name :	MMOBKL2A/MMOBKL2B
Protein Name :	Mps one binder kinase activator-like 2A/B
Human Gene Id :	126308
Human Swiss Prot No :	Q96BX8
Mouse Gene Id :	208228
Mouse Swiss Prot No :	Q8BSU7
Immunogen :	Synthesized peptide derived from Mob3A/B . at AA range: 1-80
Specificity :	Mob3A/B Polyclonal Antibody detects endogenous levels of Mob3A/B protein.
Formulation :	Liquid in PBS containing 50% glycerol, 0.5% BSA and 0.02% sodium azide.
Source :	Polyclonal, Rabbit,IgG
Dilution :	WB 1:500 - 1:2000. IHC: 1:100-1:300. ELISA: 1:10000.. IF 1:50-200
Purification :	The antibody was affinity-purified from rabbit antiserum by affinity-chromatography using epitope-specific immunogen.
Concentration :	1 mg/ml
Storage Stability :	-15°C to -25°C/1 year(Do not lower than -25°C)

Observed Band : 25kD**Background :** function:May regulate the activity of kinases.,sequence caution:Chimera. There is an inclusion of DNA from another gene in position 141.,similarity:Belongs to the MOB1/phocein family.,**Function :** function:May regulate the activity of kinases.,sequence caution:Chimera. There is an inclusion of DNA from another gene in position 141.,similarity:Belongs to the MOB1/phocein family.,**Subcellular Location :** intracellular,**Expression :** Cervix,Skin,

Products Images



Western blot analysis of 3T3 using Mob3A/B antibody.
Secondary antibody(catalog#:RS0002) was diluted at 1:20000