

## Cardiotrophin-1 Polyclonal Antibody

<b>Catalog No :</b>	YT6063
<b>Reactivity :</b>	Human;Mouse;Rat
<b>Applications :</b>	WB;ELISA
<b>Target :</b>	Cardiotrophin-1
<b>Fields :</b>	>>Cytokine-cytokine receptor interaction;>>JAK-STAT signaling pathway
<b>Gene Name :</b>	CTF1
<b>Protein Name :</b>	Cardiotrophin-1
<b>Human Gene Id :</b>	1489
<b>Human Swiss Prot No :</b>	Q16619
<b>Mouse Gene Id :</b>	13019
<b>Mouse Swiss Prot No :</b>	Q60753
<b>Immunogen :</b>	Synthesized peptide derived from human Cardiotrophin-1. at AA range: 151-200
<b>Specificity :</b>	This antibody detects endogenous levels of Cardiotrophin-1
<b>Formulation :</b>	Liquid in PBS containing 50% glycerol, 0.5% BSA and 0.02% sodium azide.
<b>Source :</b>	Polyclonal, Rabbit,IgG
<b>Dilution :</b>	WB 1:500-2000, ELISA 1:10000-20000
<b>Purification :</b>	The antibody was affinity-purified from rabbit antiserum by affinity-chromatography using epitope-specific immunogen.
<b>Concentration :</b>	1 mg/ml

**Storage Stability :** -15°C to -25°C/1 year (Do not lower than -25°C)

**Observed Band :** 23kD

**Cell Pathway :** Cytokine-cytokine receptor interaction; Jak\_STAT;

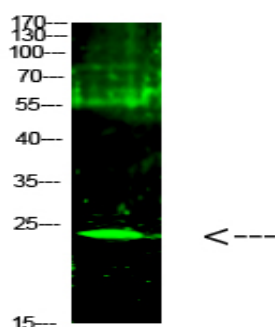
**Background :** The protein encoded by this gene is a secreted cytokine that induces cardiac myocyte hypertrophy in vitro. It has been shown to bind and activate the ILST/gp130 receptor. Two transcript variants encoding different isoforms have been found for this gene. [provided by RefSeq, Dec 2008],

**Function :** function:Induces cardiac myocyte hypertrophy in vitro. Binds to and activates the ILST/gp130 receptor., similarity:Belongs to the IL-6 superfamily., tissue specificity:Highly expressed in heart, skeletal muscle, prostate and ovary. Lower levels in lung, kidney, pancreas, thymus, testis and small intestine. Little or no expression in brain, placenta, liver, spleen, colon or peripheral blood leukocytes.,

**Subcellular Location :** Secreted.

**Expression :** Highly expressed in heart, skeletal muscle, prostate and ovary. Lower levels in lung, kidney, pancreas, thymus, testis and small intestine. Little or no expression in brain, placenta, liver, spleen, colon or peripheral blood leukocytes.

## Products Images



Western Blot analysis of 1, mouse-kidney cells using primary antibody diluted at 1:1000 (4°C overnight). Secondary antibody: Goat Anti-rabbit IgG IRDye 800 (diluted at 1:5000, 25°C, 1 hour)