

GDF-3 Polyclonal Antibody

| | |
|------------------------------|---|
| Catalog No : | YT5646 |
| Reactivity : | Human;Mouse |
| Applications : | WB;ELISA |
| Target : | GDF-3 |
| Fields : | >>Cytokine-cytokine receptor interaction |
| Gene Name : | GDF3 |
| Protein Name : | Growth/differentiation factor 3 |
| Human Gene Id : | 9573 |
| Human Swiss Prot No : | Q9NR23 |
| Mouse Gene Id : | 14562 |
| Mouse Swiss Prot No : | Q07104 |
| Immunogen : | Synthesized peptide derived from Growth/differentiation factor 3 at AA range: 311-360 |
| Specificity : | GDF-3 Polyclonal Antibody detects endogenous levels of GDF-3 protein. |
| Formulation : | Liquid in PBS containing 50% glycerol, 0.5% BSA and 0.02% sodium azide. |
| Source : | Polyclonal, Rabbit,IgG |
| Dilution : | WB 1:500 - 1:2000. ELISA: 1:10000. Not yet tested in other applications. |
| Purification : | The antibody was affinity-purified from rabbit antiserum by affinity-chromatography using epitope-specific immunogen. |
| Concentration : | 1 mg/ml |

Storage Stability : -15°C to -25°C/1 year(Do not lower than -25°C)

Observed Band : 41kD

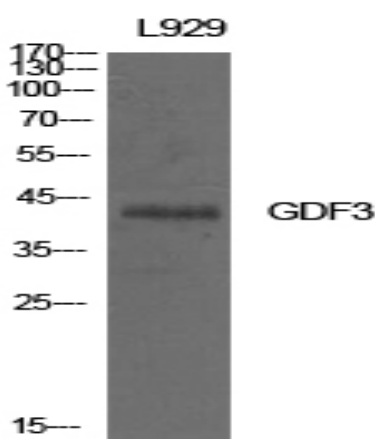
Background : This gene encodes a secreted ligand of the TGF-beta (transforming growth factor-beta) superfamily of proteins. Ligands of this family bind various TGF-beta receptors leading to recruitment and activation of SMAD family transcription factors that regulate gene expression. The encoded preprotein is proteolytically processed to generate each subunit of the disulfide-linked homodimer. This protein plays a role ocular and skeletal development. Mutations in this gene are associated with microphthalmia, coloboma, and skeletal abnormalities in human patients. [provided by RefSeq, Aug 2016],

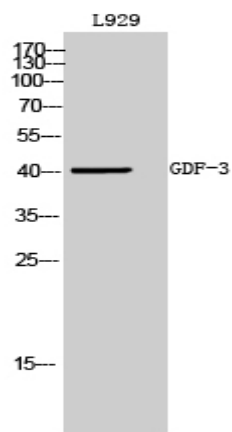
Function : online information:GDF3 entry,similarity:Belongs to the TGF-beta family.,subunit:Homodimer or heterodimer (Potential). But, in contrast to other members of this family, cannot be disulfide-linked.,

Subcellular Location : Secreted . Cytoplasm . Mainly accumulated in the cytoplasm. .

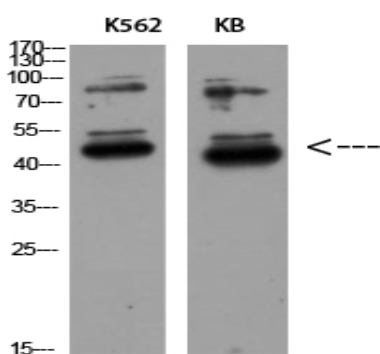
Expression : Kidney,

Products Images





Western Blot analysis of L929 cells using GDF-3 Polyclonal Antibody diluted at 1:500. Secondary antibody(catalog#:RS0002) was diluted at 1:20000



Western Blot analysis of K562 KB using GDF-3 Polyclonal Antibody diluted at 1:500. Secondary antibody(catalog#:RS0002) was diluted at 1:20000