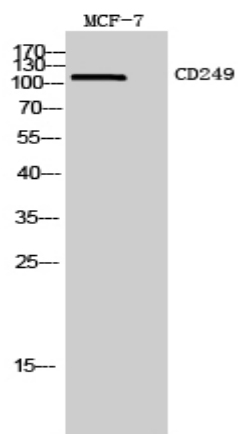


CD249 Polyclonal Antibody

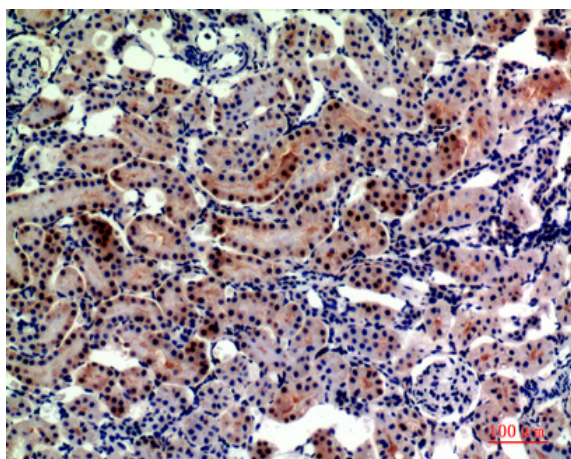
| | |
|------------------------------|--|
| Catalog No : | YT5639 |
| Reactivity : | Human;Mouse;Rat |
| Applications : | WB;IHC;IF;ELISA |
| Target : | CD249 |
| Fields : | >>Renin-angiotensin system |
| Gene Name : | ENPEP |
| Protein Name : | Glutamyl aminopeptidase |
| Human Gene Id : | 2028 |
| Human Swiss Prot No : | Q07075 |
| Mouse Gene Id : | 13809 |
| Mouse Swiss Prot No : | P16406 |
| Rat Gene Id : | 64017 |
| Rat Swiss Prot No : | P50123 |
| Immunogen : | The antiserum was produced against synthesized peptide derived from the Internal region of human ENPEP. AA range:671-720 |
| Specificity : | CD249 Polyclonal Antibody detects endogenous levels of CD249 protein. |
| Formulation : | Liquid in PBS containing 50% glycerol, 0.5% BSA and 0.02% sodium azide. |
| Source : | Polyclonal, Rabbit,IgG |
| Dilution : | WB 1:500 - 1:2000. IHC: 1:100-1:300. ELISA: 1:10000.. IF 1:50-200 |

| | |
|-------------------------------|---|
| Purification : | The antibody was affinity-purified from rabbit antiserum by affinity-chromatography using epitope-specific immunogen. |
| Concentration : | 1 mg/ml |
| Storage Stability : | -15°C to -25°C/1 year(Do not lower than -25°C) |
| Observed Band : | 110kD |
| Cell Pathway : | Renin-angiotensin system; |
| Background : | catalytic activity:Release of N-terminal glutamate (and to a lesser extent aspartate) from a peptide.,cofactor:Binds 1 zinc ion per subunit.,function:Appears to have a role in the catabolic pathway of the renin-angiotensin system. Probably plays a role in regulating growth and differentiation of early B-lineage cells.,similarity:Belongs to the peptidase M1 family.,subunit:Homodimer; disulfide-linked.,tissue specificity:Expressed by epithelial cells of the proximal tubule cells and the glomerulus of the nephron. Also found in a variety of other tissues., |
| Function : | catalytic activity:Release of N-terminal glutamate (and to a lesser extent aspartate) from a peptide.,cofactor:Binds 1 zinc ion per subunit.,function:Appears to have a role in the catabolic pathway of the renin-angiotensin system. Probably plays a role in regulating growth and differentiation of early B-lineage cells.,similarity:Belongs to the peptidase M1 family.,subunit:Homodimer; disulfide-linked.,tissue specificity:Expressed by epithelial cells of the proximal tubule cells and the glomerulus of the nephron. Also found in a variety of other tissues., |
| Subcellular Location : | Cell membrane ; Single-pass type II membrane protein. |
| Expression : | Expressed in choriocarcinoma cancer cell lines (at protein level) (PubMed:10692253). Expressed by epithelial cells of the proximal tubule cells and the glomerulus of the nephron. Also found in a variety of other tissues. |

Products Images



Western Blot analysis of MCF7 cells using CD249 Polyclonal Antibody. Secondary antibody(catalog#:RS0002) was diluted at 1:20000



Immunohistochemical analysis of paraffin-embedded rat-kidney, antibody was diluted at 1:200