

## CKR-5 Polyclonal Antibody

<b>Catalog No :</b>	YT5873
<b>Reactivity :</b>	Human;Rat;Mouse;
<b>Applications :</b>	WB;IHC;IF;ELISA
<b>Target :</b>	CKR-5
<b>Fields :</b>	>>Viral life cycle - HIV-1;>>Cytokine-cytokine receptor interaction;>>Viral protein interaction with cytokine and cytokine receptor;>>Chemokine signaling pathway;>>Endocytosis;>>Toxoplasmosis;>>Human cytomegalovirus infection;>>Kaposi sarcoma-associated herpesvirus infection;>>Human immunodeficiency virus 1 infection;>>Viral carcinogenesis
<b>Gene Name :</b>	CCR5 CMKBR5
<b>Protein Name :</b>	C-C chemokine receptor type 5 (C-C CKR-5) (CC-CKR-5) (CCR-5) (CCR5) (CHEMR13) (HIV-1 fusion coreceptor) (CD antigen CD195)
<b>Human Gene Id :</b>	1234
<b>Human Swiss Prot No :</b>	P51681
<b>Mouse Gene Id :</b>	12774
<b>Mouse Swiss Prot No :</b>	P51682
<b>Immunogen :</b>	Synthetic peptide from human protein at AA range: 151-200
<b>Specificity :</b>	The antibody detects endogenous CKR-5
<b>Formulation :</b>	Liquid in PBS containing 50% glycerol, 0.5% BSA and 0.02% sodium azide.
<b>Source :</b>	Polyclonal, Rabbit,IgG
<b>Dilution :</b>	WB 1:500-2000,IHC 1:500-200, ELISA 1:10000-20000. IF 1:50-200
<b>Purification :</b>	The antibody was affinity-purified from rabbit antiserum by affinity-

chromatography using epitope-specific immunogen.

---

**Concentration :** 1 mg/ml

---

**Storage Stability :** -15°C to -25°C/1 year(Do not lower than -25°C)

---

**Observed Band :** 40kD

---

**Cell Pathway :** Cytokine-cytokine receptor interaction;Chemokine;Endocytosis;

---

**Background :** This gene encodes a member of the beta chemokine receptor family, which is predicted to be a seven transmembrane protein similar to G protein-coupled receptors. This protein is expressed by T cells and macrophages, and is known to be an important co-receptor for macrophage-tropic virus, including HIV, to enter host cells. Defective alleles of this gene have been associated with the HIV infection resistance. The ligands of this receptor include monocyte chemoattractant protein 2 (MCP-2), macrophage inflammatory protein 1 alpha (MIP-1 alpha), macrophage inflammatory protein 1 beta (MIP-1 beta) and regulated on activation normal T expressed and secreted protein (RANTES). Expression of this gene was also detected in a promyeloblastic cell line, suggesting that this protein may play a role in granulocyte lineage proliferation and differentiation. This gene is located at the chemok

---

**Function :** disease:Genetic variation in CCR5 is associated with susceptibility to insulin-dependent diabetes mellitus type 2 (IDDM2) [MIM:612522]. IDDM is caused by the body's own immune system which destroys the insulin-producing beta cells in the pancreas. Classical features are polydipsia, polyphagia and polyuria, due to hyperglycemia-induced osmotic diuresis.,function:Receptor for a number of inflammatory CC-chemokines including MIP-1-alpha, MIP-1-beta and RANTES and subsequently transduces a signal by increasing the intracellular calcium ion level. May play a role in the control of granulocytic lineage proliferation or differentiation. Acts as a coreceptor (CD4 being the primary receptor) for HIV-1 R5 isolates.,online information:CC chemokine receptors entry,online information:CCR5 receptor entry,polymorphism:Ser-60 variant, a naturally occurring mutation in a conserved residue in the first i

---

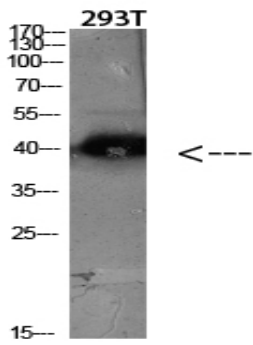
**Subcellular Location :** Cell membrane ; Multi-pass membrane protein .

---

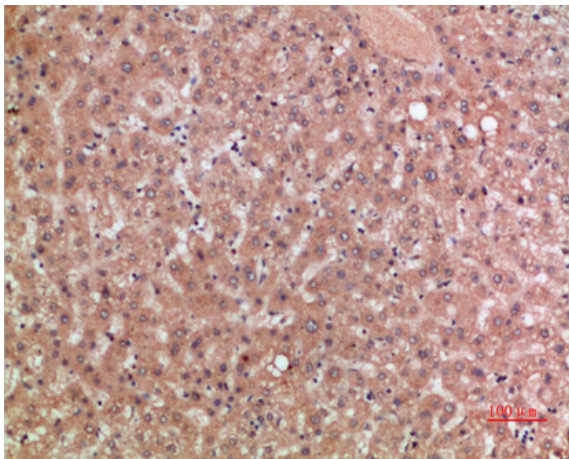
**Expression :** Highly expressed in spleen, thymus, in the myeloid cell line THP-1, in the promyeloblastic cell line KG-1a and on CD4+ and CD8+ T-cells. Medium levels in peripheral blood leukocytes and in small intestine. Low levels in ovary and lung.

---

## Products Images



Western blot analysis of 293T lysate, antibody was diluted at 2000. Secondary antibody(catalog#:RS0002) was diluted at 1:20000



Immunohistochemical analysis of paraffin-embedded human-liver, antibody was diluted at 1:200