

CD155 Polyclonal Antibody

Catalog No :	YT5628
Reactivity :	Human;Mouse;Rat
Applications :	WB IF;ELISA
Target :	CD155
Fields :	>>Cell adhesion molecules
Gene Name :	PVR
Protein Name :	Poliovirus receptor
Human Gene Id :	5817
Human Swiss Prot No :	P15151
Immunogen :	The antiserum was produced against synthesized peptide derived from the Internal region of human PVR. AA range:81-130
Specificity :	CD155 Polyclonal Antibody detects endogenous levels of CD155 protein.
Formulation :	Liquid in PBS containing 50% glycerol, 0.5% BSA and 0.02% sodium azide.
Source :	Polyclonal, Rabbit,IgG
Dilution :	WB 1:500-2000 IF 1:100-300 ELISA 1:5000-20000 Not yet tested in other applications.
Purification :	The antibody was affinity-purified from rabbit antiserum by affinity-chromatography using epitope-specific immunogen.
Concentration :	1 mg/ml
Storage Stability :	-15°C to -25°C/1 year(Do not lower than -25°C)
Observed Band :	70kD

Cell Pathway : Cell adhesion molecules (CAMs);

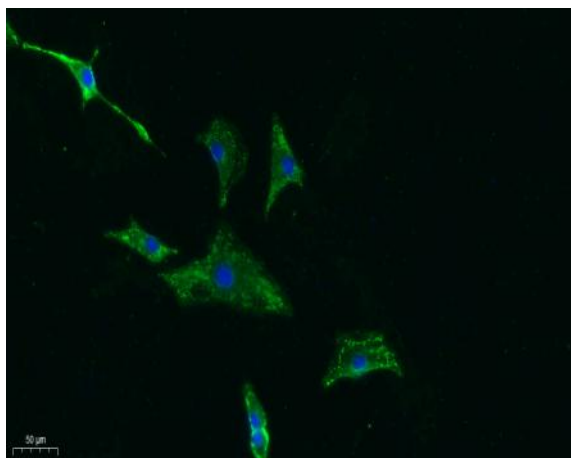
Background : The protein encoded by this gene is a transmembrane glycoprotein belonging to the immunoglobulin superfamily. The external domain mediates cell attachment to the extracellular matrix molecule vitronectin, while its intracellular domain interacts with the dynein light chain Tctex-1/DYNLT1. The gene is specific to the primate lineage, and serves as a cellular receptor for poliovirus in the first step of poliovirus replication. Multiple transcript variants encoding different isoforms have been found for this gene. [provided by RefSeq, Oct 2008],

Function : function:Mediates NK cell adhesion and triggers NK cell effector functions. Binds two different NK cell receptors: CD96 and CD226. These interactions accumulates at the cell-cell contact site, leading to the formation of a mature immunological synapse between NK cell and target cell. This may trigger adhesion and secretion of lytic granules and IFN-gamma and activate cytotoxicity of activated NK cells. May also promote NK cell-target cell modular exchange, and PVR transfer to the NK cell. This transfer is more important in some tumor cells expressing a lot of PVR, and may trigger fratricide NK cell activation, providing tumors with a mechanism of immunoevasion. Plays a role in mediating tumor cell invasion and migration. Serves as a receptor for poliovirus attachment to target cells. May play a role in axonal transport of poliovirus, by targeting virion-PVR-containing endocytic vesicles to

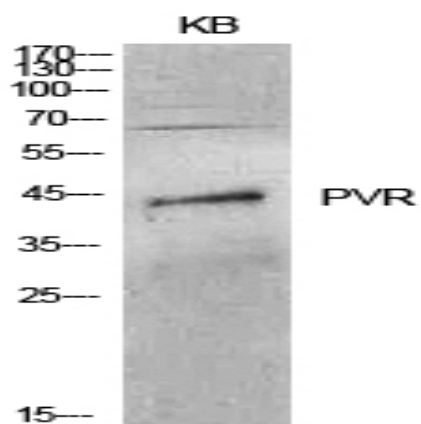
Subcellular Location : [Isoform Alpha]: Cell membrane; Single-pass type I membrane protein.; [Isoform Delta]: Cell membrane; Single-pass type I membrane protein.; [Isoform Beta]: Secreted.; [Isoform Gamma]: Secreted.

Expression : Liver,Pancreas,Placenta,Plasma,

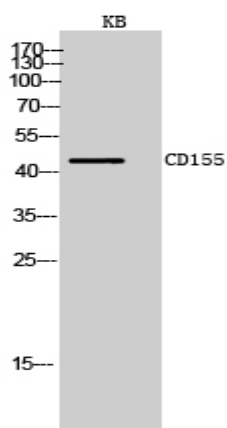
Products Images



Immunofluorescence analysis of A549. 1,primary Antibody was diluted at 1:200(4°C overnight). 2, Goat Anti Rabbit IgG (H&L) - Alexa Fluor 488 Secondary antibody was diluted at 1:1000(room temperature, 50min).3, Picture B: DAPI(blue) 10min.



Western Blot analysis of KB cells using CD155 Polyclonal Antibody. Secondary antibody(catalog#:RS0002) was diluted at 1:20000



Western Blot analysis of KB cells using CD155 Polyclonal Antibody. Secondary antibody(catalog#:RS0002) was diluted at 1:20000