

## Integrin $\alpha$ 5 Polyclonal Antibody

|                              |   |
|------------------------------|---|
| <b>Catalog No :</b>          | YT5589  |
| <b>Reactivity :</b>          | Human;Mouse;Rat   |
| <b>Applications :</b>        | WB;IHC;IF;ELISA   |
| <b>Target :</b>              | Integrin $\alpha$ 5   |
| <b>Fields :</b>              | >>Phagosome;>>PI3K-Akt signaling pathway;>>Focal adhesion;>>ECM-receptor interaction;>>Hematopoietic cell lineage;>>Regulation of actin cytoskeleton;>>Bacterial invasion of epithelial cells;>>Shigellosis;>>Pertussis;>>Yersinia infection;>>Human papillomavirus infection;>>Herpes simplex virus 1 infection;>>Proteoglycans in cancer;>>MicroRNAs in cancer;>>Hypertrophic cardiomyopathy;>>Arrhythmogenic right ventricular cardiomyopathy;>>Dilated cardiomyopathy |
| <b>Gene Name :</b>           | ITGA5   |
| <b>Protein Name :</b>        | Integrin alpha-5  |
| <b>Human Gene Id :</b>       | 3678  |
| <b>Human Swiss Prot No :</b> | P08648  |
| <b>Mouse Gene Id :</b>       | 16402   |
| <b>Mouse Swiss Prot No :</b> | P11688  |
| <b>Immunogen :</b>           | The antiserum was produced against synthesized peptide derived from the Internal region of human ITGA5. AA range:561-610  |
| <b>Specificity :</b>         | Integrin $\alpha$ 5 Polyclonal Antibody detects endogenous levels of Integrin $\alpha$ 5 protein.   |
| <b>Formulation :</b>         | Liquid in PBS containing 50% glycerol, 0.5% BSA and 0.02% sodium azide.   |
| <b>Source :</b>              | Polyclonal, Rabbit,IgG  |
|                              | WB 1:500 - 1:2000. IHC: 1:100-1:300. ELISA: 1:10000.. IF 1:50-200   |

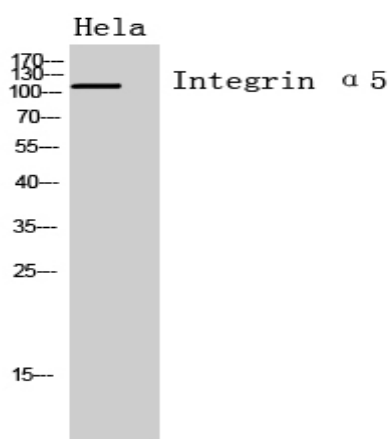
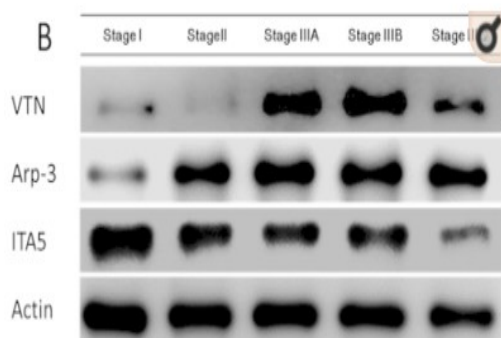
---

|                               |  |
|-------------------------------|--|
| <b>Purification :</b>         | The antibody was affinity-purified from rabbit antiserum by affinity-chromatography using epitope-specific immunogen.  |
| <b>Concentration :</b>        | 1 mg/ml  |
| <b>Storage Stability :</b>    | -15°C to -25°C/1 year(Do not lower than -25°C)   |
| <b>Observed Band :</b>        | 115kD  |
| <b>Cell Pathway :</b>         | Focal adhesion;ECM-receptor interaction;Hematopoietic cell lineage;Regulates Actin and Cytoskeleton;Hypertrophic cardiomyopathy (HCM);Arrhythmogenic right ventricular cardiomyopathy (ARVC);Dilated car   |
| <b>Background :</b>           | integrin subunit alpha 5(ITGA5) Homo sapiens The product of this gene belongs to the integrin alpha chain family. Integrins are heterodimeric integral membrane proteins composed of an alpha subunit and a beta subunit that function in cell surface adhesion and signaling. The encoded preproprotein is proteolytically processed to generate light and heavy chains that comprise the alpha 5 subunit. This subunit associates with the beta 1 subunit to form a fibronectin receptor. This integrin may promote tumor invasion, and higher expression of this gene may be correlated with shorter survival time in lung cancer patients. Note that the integrin alpha 5 and integrin alpha V subunits are encoded by distinct genes. [provided by RefSeq, Oct 2015], |
| <b>Function :</b>             | function:Integrin alpha-5/beta-1 is a receptor for fibronectin and fibrinogen. It recognizes the sequence R-G-D in its ligands. In case of HIV-1 infection, the interaction with extracellular viral Tat protein seems to enhance angiogenesis in Kaposi's sarcoma lesions.,similarity:Belongs to the integrin alpha chain family.,similarity:Contains 7 FG-GAP repeats.,subunit:Heterodimer of an alpha and a beta subunit. The alpha subunit is composed of an heavy and a light chain linked by a disulfide bond. Alpha-5 associates with beta-1. Interacts with HPS5 and NISCH. Interacts with HIV-1 Tat. Interacts with RAB21.,   |
| <b>Subcellular Location :</b> | Membrane; Single-pass type I membrane protein. Cell junction, focal adhesion . Cell surface .  |
| <b>Expression :</b>           | Liver,Placenta,  |

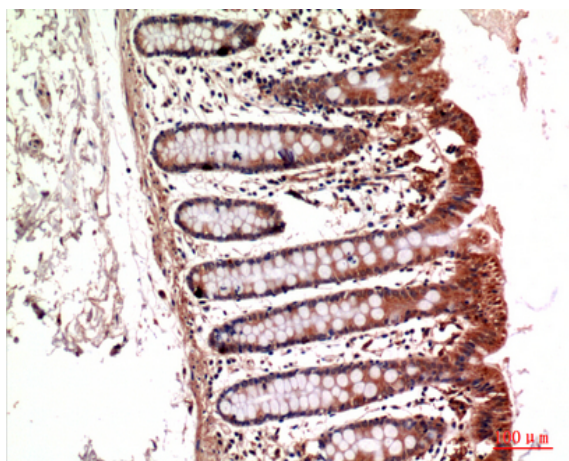
---

## Products Images

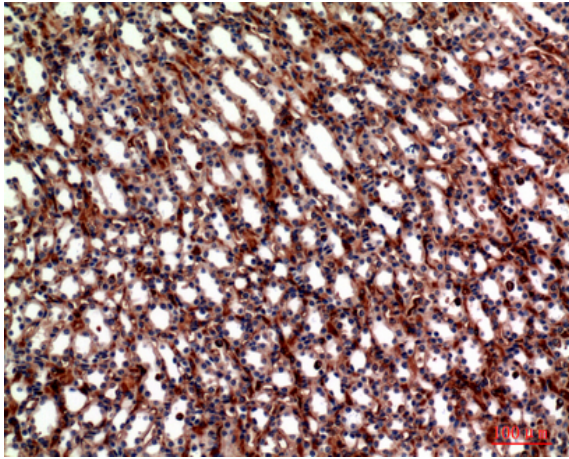
Yin, Xuefei, et al. "Large scale systematic proteomic quantification from non-metastatic to metastatic colorectal cancer." Scientific reports 5 (2015): 12120.



Western Blot analysis of HeLa cells using Integrin  $\alpha$ 5 Polyclonal Antibody. Secondary antibody(catalog#:RS0002) was diluted at 1:20000



Immunohistochemical analysis of paraffin-embedded mouse-kidney, antibody was diluted at 1:100



Immunohistochemical analysis of paraffin-embedded mouse-kidney, antibody was diluted at 1:100