

## CD19 Polyclonal Antibody

<b>Catalog No :</b>	YT5580
<b>Reactivity :</b>	Human;Mouse
<b>Applications :</b>	WB;FCM;IHC;IF;ELISA
<b>Target :</b>	CD19
<b>Fields :</b>	>>PI3K-Akt signaling pathway;>>Hematopoietic cell lineage;>>B cell receptor signaling pathway;>>Epstein-Barr virus infection;>>Primary immunodeficiency
<b>Gene Name :</b>	CD19
<b>Protein Name :</b>	B-lymphocyte antigen CD19
<b>Human Gene Id :</b>	930
<b>Human Swiss Prot No :</b>	P15391
<b>Mouse Swiss Prot No :</b>	P25918
<b>Immunogen :</b>	Synthesized peptide derived from B-lymphocyte antigen CD19 at AA range: 191-240
<b>Specificity :</b>	CD19 Polyclonal Antibody detects endogenous levels of CD19 protein.
<b>Formulation :</b>	Liquid in PBS containing 50% glycerol, 0.5% BSA and 0.02% sodium azide.
<b>Source :</b>	Polyclonal, Rabbit,IgG
<b>Dilution :</b>	WB 1:500-2000;Flow Cyt 1:50-200;IHC 1:100-500;IF(paraffin section);ELISA 1:5000-20000
<b>Purification :</b>	The antibody was affinity-purified from rabbit antiserum by affinity-chromatography using epitope-specific immunogen.
<b>Concentration :</b>	1 mg/ml

**Storage Stability :** -15°C to -25°C/1 year(Do not lower than -25°C)

**Observed Band :** 61kD

**Cell Pathway :** Hematopoietic cell lineage;B\_Cell\_Antigen;Primary immunodeficiency;

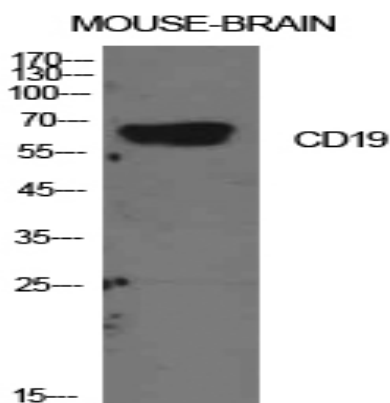
**Background :** Lymphocytes proliferate and differentiate in response to various concentrations of different antigens. The ability of the B cell to respond in a specific, yet sensitive manner to the various antigens is achieved with the use of low-affinity antigen receptors. This gene encodes a cell surface molecule which assembles with the antigen receptor of B lymphocytes in order to decrease the threshold for antigen receptor-dependent stimulation. [provided by RefSeq, Jul 2008],

**Function :** disease:Defects in CD19 are a cause of hypogammaglobulinemia [MIM:107265].,function:Assembles with the antigen receptor of B lymphocytes in order to decrease the threshold for antigen receptor-dependent stimulation.,online information:CD19 mutation db,PTM:Phosphorylated on serine and threonine upon DNA damage, probably by ATM or ATR. Phosphorylated on tyrosine following B-cell activation.,similarity:Contains 2 Ig-like C2-type (immunoglobulin-like) domains.,subunit:Forms a complex with CD21, CD81 and CD225 in the membrane of mature B cells. Interacts with VAV. Interacts with GRB2 and SOS when phosphorylated on Tyr-348 and/or Tyr-378. Interacts with PLCG2 when phosphorylated on Tyr-409.,

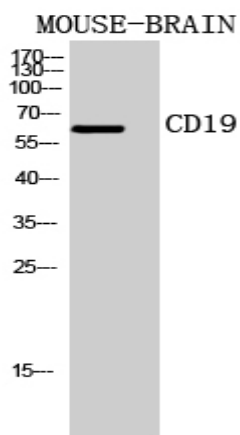
**Subcellular Location :** Cell membrane ; Single-pass type I membrane protein . Membrane raft ; Single-pass type I membrane protein .

**Expression :** Detected on marginal zone and germinal center B cells in lymph nodes (PubMed:2463100). Detected on blood B cells (at protein level) (PubMed:2463100, PubMed:16672701).

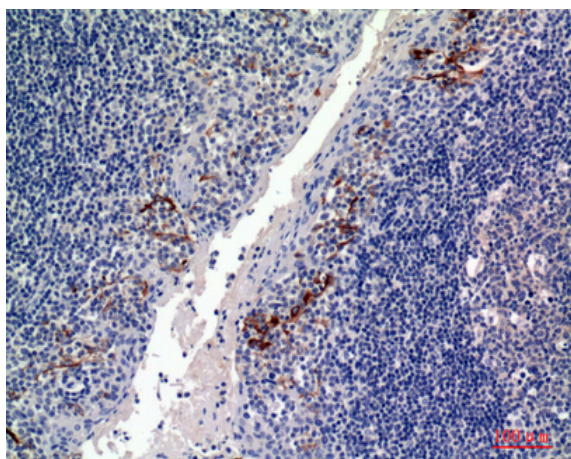
## Products Images



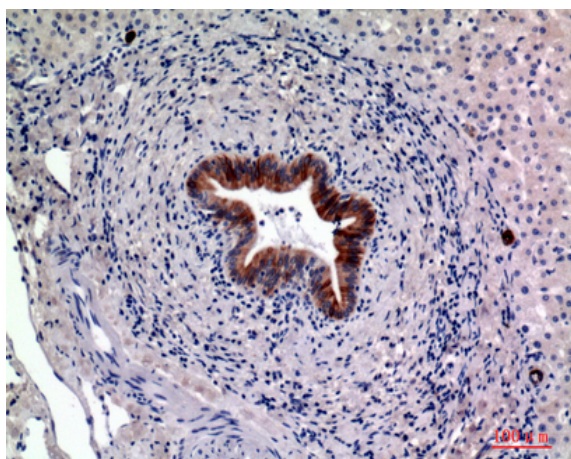
Western Blot analysis of mouse brain cells using CD19 Polyclonal Antibody. Antibody was diluted at 1:2000. Secondary antibody(catalog#:RS0002) was diluted at 1:20000



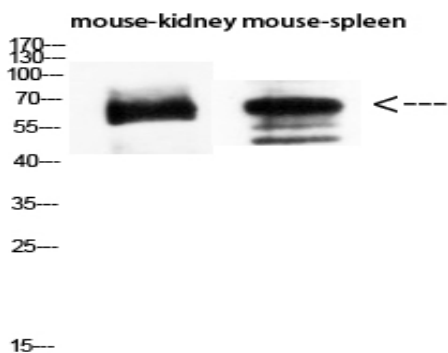
Western Blot analysis of MOUSE-BRAIN cells using CD19 Polyclonal Antibody diluted at 1:2000. Secondary antibody(catalog#:RS0002) was diluted at 1:20000



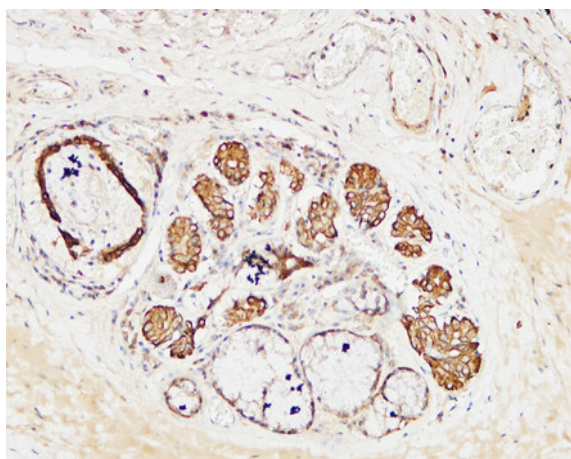
Immunohistochemical analysis of paraffin-embedded human-tonsils, antibody was diluted at 1:100



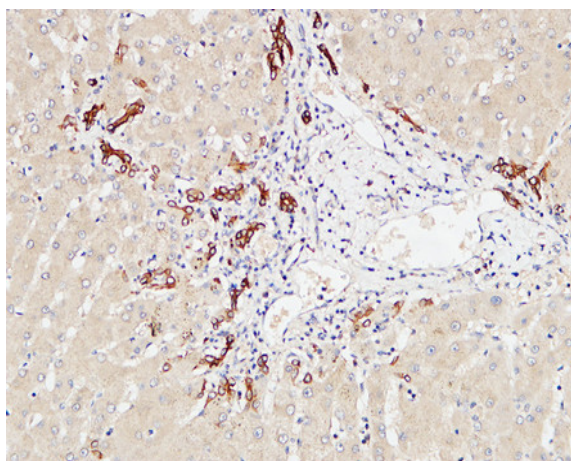
Immunohistochemical analysis of paraffin-embedded human-liver, antibody was diluted at 1:100



Western Blot analysis of mouse-kidney mouse-spleen using CD19 Polyclonal Antibody diluted at 1:1500. Secondary antibody(catalog#:RS0002) was diluted at 1:20000



Immunohistochemical analysis of paraffin-embedded Human Amygdala. 1, Antibody was diluted at 1:200(4° overnight). 2, High-pressure and temperature EDTA, pH8.0 was used for antigen retrieval. 3,Secondary antibody was diluted at 1:200(room temperature, 30min).



Immunohistochemical analysis of paraffin-embedded Human liver. 1, Antibody was diluted at 1:100(4° overnight). 2, High-pressure and temperature EDTA, pH8.0 was used for antigen retrieval. 3,Secondary antibody was diluted at 1:200(room temperature, 30min).