

## Dkk-1 Polyclonal Antibody

|                              |   |
|------------------------------|---|
| <b>Catalog No :</b>          | YT5562  |
| <b>Reactivity :</b>          | Human;Mouse;Rat   |
| <b>Applications :</b>        | WB;IHC;IF;ELISA   |
| <b>Target :</b>              | Dkk-1   |
| <b>Fields :</b>              | >>Wnt signaling pathway;>>Alzheimer disease;>>Pathways of neurodegeneration - multiple diseases                           |
| <b>Gene Name :</b>           | DKK1  |
| <b>Protein Name :</b>        | Dickkopf-related protein 1  |
| <b>Human Gene Id :</b>       | 22943   |
| <b>Human Swiss Prot No :</b> | O94907  |
| <b>Mouse Gene Id :</b>       | 13380   |
| <b>Mouse Swiss Prot No :</b> | O54908  |
| <b>Immunogen :</b>           | The antiserum was produced against synthesized peptide derived from the C-terminal region of human DKK1. AA range:181-230 |
| <b>Specificity :</b>         | Dkk-1 Polyclonal Antibody detects endogenous levels of Dkk-1 protein.   |
| <b>Formulation :</b>         | Liquid in PBS containing 50% glycerol, 0.5% BSA and 0.02% sodium azide.   |
| <b>Source :</b>              | Polyclonal, Rabbit,IgG  |
| <b>Dilution :</b>            | WB 1:500 - 1:2000. IHC: 1:100-1:300. ELISA: 1:10000.. IF 1:50-200   |
| <b>Purification :</b>        | The antibody was affinity-purified from rabbit antiserum by affinity-chromatography using epitope-specific immunogen.     |
| <b>Concentration :</b>       | 1 mg/ml   |

**Storage Stability :** -15°C to -25°C/1 year(Do not lower than -25°C)

**Observed Band :** 29kD

**Cell Pathway :** WNT;WNT-T CELL

**Background :** This gene encodes a protein that is a member of the dickkopf family. It is a secreted protein with two cysteine rich regions and is involved in embryonic development through its inhibition of the WNT signaling pathway. Elevated levels of DKK1 in bone marrow plasma and peripheral blood is associated with the presence of osteolytic bone lesions in patients with multiple myeloma. [provided by RefSeq, Jul 2008],

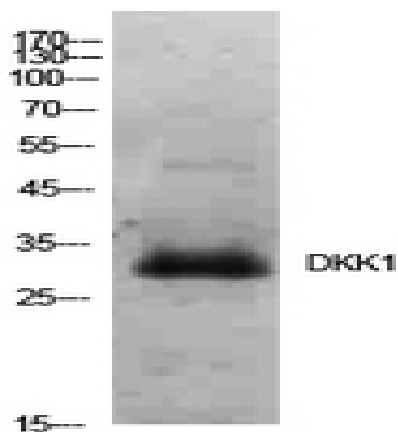
**Function :** function:Inhibitor of Wnt signaling pathway.,similarity:Belongs to the dickkopf family.,tissue specificity:Placenta.,

**Subcellular Location :** Secreted.

**Location :**

**Expression :** Placenta.

## Products Images



Western Blot analysis of HeLa cells using Dkk-1 Polyclonal Antibody. Secondary antibody(catalog#:RS0002) was diluted at 1:20000



Immunohistochemical analysis of paraffin-embedded human-brain, antibody was diluted at 1:100