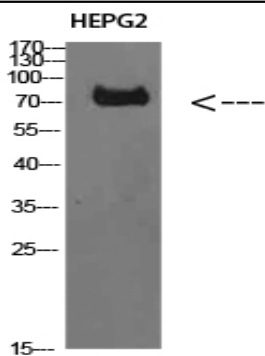


TRIF Polyclonal Antibody

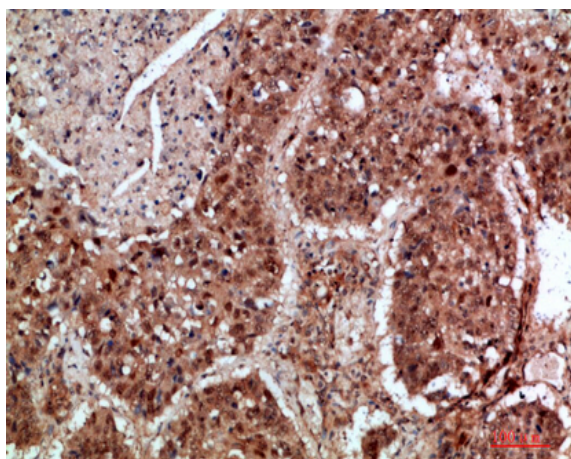
Catalog No :	YT5783
Reactivity :	Human;Mouse
Applications :	WB;IHC;IF;ELISA
Target :	TRIF
Fields :	>>NF-kappa B signaling pathway;>>Necroptosis;>>Toll-like receptor signaling pathway;>>NOD-like receptor signaling pathway;>>Alcoholic liver disease;>>Pertussis;>>Yersinia infection;>>Chagas disease;>>Hepatitis C;>>Hepatitis B;>>Influenza A;>>Human papillomavirus infection;>>Kaposi sarcoma-associated herpesvirus infection;>>Herpes simplex virus 1 infection;>>PD-L1 expression and PD-1 checkpoint pathway in cancer;>>Lipid and atherosclerosis
Gene Name :	TICAM1
Protein Name :	TRIF
Human Gene Id :	148022
Human Swiss Prot No :	Q8IUC6
Mouse Gene Id :	106759
Mouse Swiss Prot No :	Q80UF7
Immunogen :	Synthesized peptide derived from TRIF at AA range: 663-712
Specificity :	TRIF Polyclonal Antibody detects endogenous levels of TRIF
Formulation :	Liquid in PBS containing 50% glycerol, 0.5% BSA and 0.02% sodium azide.
Source :	Polyclonal, Rabbit,IgG
Dilution :	WB 1:500-2000,IHC 1:50-200 ELISA 1:10000-20000. IF 1:50-200

Purification :	The antibody was affinity-purified from rabbit antiserum by affinity-chromatography using epitope-specific immunogen.
Concentration :	1 mg/ml
Storage Stability :	-15°C to -25°C/1 year(Do not lower than -25°C)
Observed Band :	80kD
Cell Pathway :	Toll_Like;
Background :	This gene encodes an adaptor protein containing a Toll/interleukin-1 receptor (TIR) homology domain, which is an intracellular signaling domain that mediates protein-protein interactions between the Toll-like receptors (TLRs) and signal-transduction components. This protein is involved in native immunity against invading pathogens. It specifically interacts with toll-like receptor 3, but not with other TLRs, and this association mediates dsRNA induction of interferon-beta through activation of nuclear factor kappa-B, during an antiviral immune response. [provided by RefSeq, Jan 2012],
Function :	domain:The N-terminal region is essential for activation of the IFNB promoter activity.,function:Involved in innate immunity against invading pathogens. Adapter used by TLR3 and TLR4 (through TICAM2) to mediate NF-kappa-B and interferon-regulatory factor (IRF) activation, and to induce apoptosis. Ligand binding to these receptors results in TRIF recruitment through its TIR domain. Distinct protein-interaction motifs allow recruitment of the effector proteins TBK1, TRAF6 and RIPK1, which in turn, lead to the activation of transcription factors IRF3 and IRF7, NF-kappa-B and FADD respectively.,PTM:Phosphorylated by TBK1.,similarity:Contains 1 TIR domain.,subunit:Homodimer (Probable). Interacts with the TIR domain of TLR3. Interacts with AZI2, TBK1, IRF3 and IRF7. Interacts with TRAF6. Interacts with TICAM2 in TLR4 recruitment. Interaction with PIAS4 inhibits the TICAM1-induced NF-kappa-B, I
Subcellular Location :	Cytoplasmic vesicle, autophagosome . Cytoplasm, cytosol . Mitochondrion . Colocalizes with UBQLN1 in the autophagosome (PubMed:21695056). Colocalizes in the cytosol with DDX1, DDX21 and DHX36. Colocalizes in the mitochondria with DDX1 and poly(I:C) RNA ligand. The multi-helicase-TICAM1 complex may translocate to the mitochondria upon poly(I:C) RNA ligand stimulation (By similarity). .
Expression :	Ubiquitously expressed but with higher levels in liver.

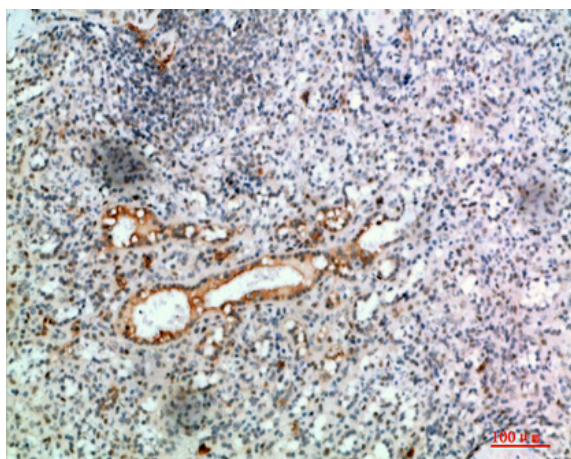
Products Images



Western Blot analysis of HEPG2 cells using TRIF Polyclonal Antibody diluted at 1:1000. Secondary antibody(catalog#:RS0002) was diluted at 1:20000



Immunohistochemical analysis of paraffin-embedded human-lung-cancer, antibody was diluted at 1:200



Immunohistochemical analysis of paraffin-embedded human-spleen, antibody was diluted at 1:200