

**PTN Polyclonal Antibody**

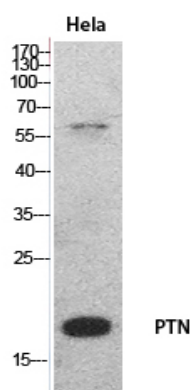
|                              |   |
|------------------------------|---|
| <b>Catalog No :</b>          | YT5519  |
| <b>Reactivity :</b>          | Human;Mouse;Rat   |
| <b>Applications :</b>        | WB;IHC;IF;ELISA   |
| <b>Target :</b>              | PTN   |
| <b>Gene Name :</b>           | PTN   |
| <b>Protein Name :</b>        | Pleiotrophin  |
| <b>Human Gene Id :</b>       | 5764  |
| <b>Human Swiss Prot No :</b> | P21246  |
| <b>Mouse Gene Id :</b>       | 19242   |
| <b>Mouse Swiss Prot No :</b> | P63089  |
| <b>Rat Gene Id :</b>         | 24924   |
| <b>Rat Swiss Prot No :</b>   | P63090  |
| <b>Immunogen :</b>           | The antiserum was produced against synthesized peptide derived from the Internal region of human PTN. AA range:1-50   |
| <b>Specificity :</b>         | PTN Polyclonal Antibody detects endogenous levels of PTN protein.   |
| <b>Formulation :</b>         | Liquid in PBS containing 50% glycerol, 0.5% BSA and 0.02% sodium azide.   |
| <b>Source :</b>              | Polyclonal, Rabbit,IgG  |
| <b>Dilution :</b>            | WB 1:500 - 1:2000. IHC: 1:100-1:300. ELISA: 1:20000.. IF 1:50-200   |
| <b>Purification :</b>        | The antibody was affinity-purified from rabbit antiserum by affinity-chromatography using epitope-specific immunogen. |

---

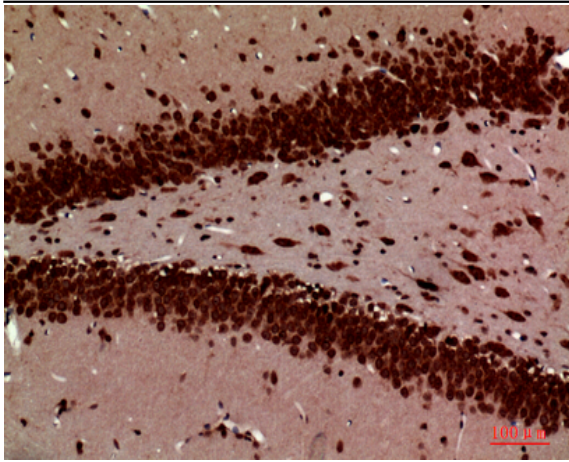
|                               |  |
|-------------------------------|--|
| <b>Concentration :</b>        | 1 mg/ml  |
| <b>Storage Stability :</b>    | -15°C to -25°C/1 year(Do not lower than -25°C)   |
| <b>Observed Band :</b>        | 19kD   |
| <b>Background :</b>           | function:Heparin binding mitogenic protein. Has neurite extension activity.,induction:By heparin and retinoic acid.,online information:Pleiotrophin entry,similarity:Belongs to the pleiotrophin family.,tissue specificity:Osteoblast and brain., |
| <b>Function :</b>             | function:Heparin binding mitogenic protein. Has neurite extension activity.,induction:By heparin and retinoic acid.,online information:Pleiotrophin entry,similarity:Belongs to the pleiotrophin family.,tissue specificity:Osteoblast and brain., |
| <b>Subcellular Location :</b> | Secreted .   |
| <b>Expression :</b>           | Osteoblast and brain.  |

---

## Products Images



Western Blot analysis of HeLa cells using PTN Polyclonal Antibody. Secondary antibody(catalog#:RS0002) was diluted at 1:20000



Immunohistochemical analysis of paraffin-embedded rat-brain, antibody was diluted at 1:100