

## CD225 Polyclonal Antibody

<b>Catalog No :</b>	YT5478
<b>Reactivity :</b>	Human;Mouse
<b>Applications :</b>	WB;IHC;IF;ELISA
<b>Target :</b>	CD225
<b>Fields :</b>	>>B cell receptor signaling pathway
<b>Gene Name :</b>	IFITM1
<b>Protein Name :</b>	Interferon-induced transmembrane protein 1
<b>Human Gene Id :</b>	8519
<b>Human Swiss Prot No :</b>	P13164
<b>Mouse Gene Id :</b>	68713
<b>Mouse Swiss Prot No :</b>	Q9D103
<b>Immunogen :</b>	The antiserum was produced against synthesized peptide derived from the N-terminal region of human IFITM1. AA range:1-50
<b>Specificity :</b>	CD225 Polyclonal Antibody detects endogenous levels of CD225 protein.
<b>Formulation :</b>	Liquid in PBS containing 50% glycerol, 0.5% BSA and 0.02% sodium azide.
<b>Source :</b>	Polyclonal, Rabbit,IgG
<b>Dilution :</b>	WB 1:500 - 1:2000. IHC: 1:100-1:300. ELISA: 1:20000.. IF 1:50-200
<b>Purification :</b>	The antibody was affinity-purified from rabbit antiserum by affinity-chromatography using epitope-specific immunogen.
<b>Concentration :</b>	1 mg/ml

**Storage Stability :** -15°C to -25°C/1 year(Do not lower than -25°C)

**Observed Band :** 15kD

**Cell Pathway :** B\_Cell\_Antigen;

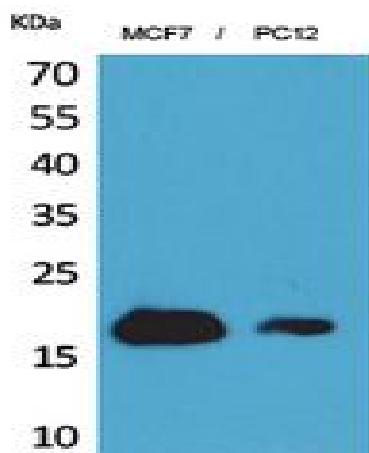
**Background :** function:Implicated in the control of cell growth. Component of a multimeric complex involved in the transduction of antiproliferative and homotypic adhesion signals.,induction:By alpha and gamma interferons.,similarity:Belongs to the CD225 family.,

**Function :** function:Implicated in the control of cell growth. Component of a multimeric complex involved in the transduction of antiproliferative and homotypic adhesion signals.,induction:By alpha and gamma interferons.,similarity:Belongs to the CD225 family.,

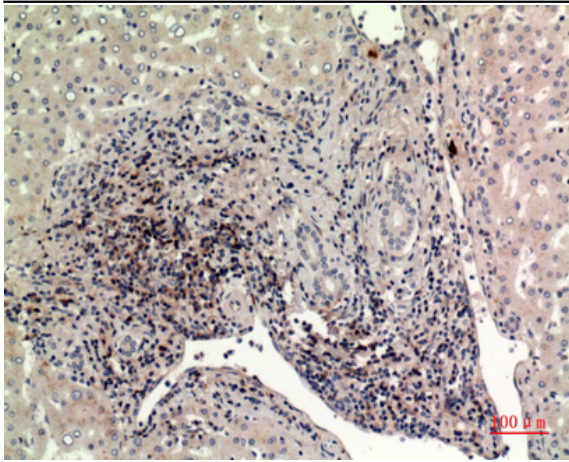
**Subcellular Location :** Cell membrane ; Single-pass membrane protein . Lysosome membrane .

**Expression :** Bone (at protein level). Levels greatly elevated in colon cancer, cervical cancer, esophageal cancer and ovarian cancer. Expressed in glioma cell lines.

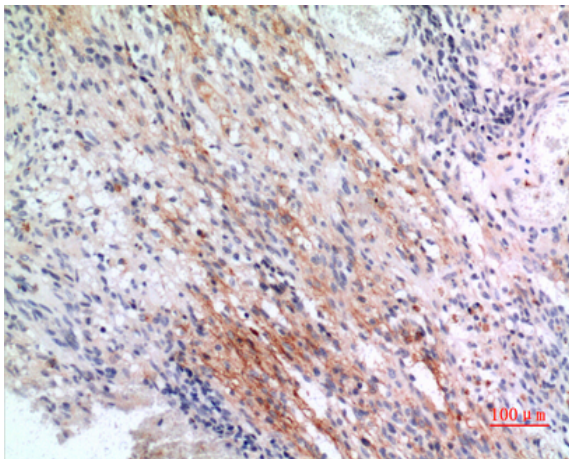
## Products Images



Western Blot analysis of MCF7, PC12 cells using CD225 Polyclonal Antibody. Secondary antibody(catalog#:RS0002) was diluted at 1:20000



Immunohistochemical analysis of paraffin-embedded human-liver, antibody was diluted at 1:100



Immunohistochemical analysis of paraffin-embedded human-brain, antibody was diluted at 1:100