

## CD200 Polyclonal Antibody

<b>Catalog No :</b>	YT5474
<b>Reactivity :</b>	Human;Rat;Mouse;
<b>Applications :</b>	WB;IHC;IF;ELISA
<b>Target :</b>	CD200
<b>Gene Name :</b>	CD200
<b>Protein Name :</b>	OX-2 membrane glycoprotein
<b>Human Gene Id :</b>	4345
<b>Human Swiss Prot No :</b>	P41217
<b>Mouse Swiss Prot No :</b>	O54901
<b>Rat Swiss Prot No :</b>	P04218
<b>Immunogen :</b>	The antiserum was produced against synthesized peptide derived from the Internal region of human CD200. AA range:171-220
<b>Specificity :</b>	CD200 Polyclonal Antibody detects endogenous levels of CD200 protein.
<b>Formulation :</b>	Liquid in PBS containing 50% glycerol, 0.5% BSA and 0.02% sodium azide.
<b>Source :</b>	Polyclonal, Rabbit,IgG
<b>Dilution :</b>	WB 1:500 - 1:2000. IHC: 1:100-1:300. ELISA: 1:20000.. IF 1:50-200
<b>Purification :</b>	The antibody was affinity-purified from rabbit antiserum by affinity-chromatography using epitope-specific immunogen.
<b>Concentration :</b>	1 mg/ml
<b>Storage Stability :</b>	-15°C to -25°C/1 year(Do not lower than -25°C)

**Observed Band :** 31kD

**Background :** This gene encodes a type I membrane glycoprotein containing two extracellular immunoglobulin domains, a transmembrane and a cytoplasmic domain. This gene is expressed by various cell types, including B cells, a subset of T cells, thymocytes, endothelial cells, and neurons. The encoded protein plays an important role in immunosuppression and regulation of anti-tumor activity. Alternative splicing results in multiple transcript variants encoding different isoforms. [provided by RefSeq, Jan 2016],

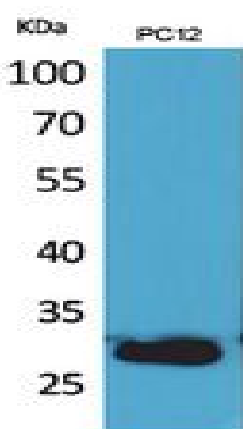
**Function :** function:Costimulates T-cell proliferation. May regulate myeloid cell activity in a variety of tissues.,similarity:Contains 1 Ig-like C2-type (immunoglobulin-like) domain.,similarity:Contains 1 Ig-like V-type (immunoglobulin-like) domain.,subunit:Interacts with CD200R1.,

**Subcellular Location :** Cell membrane; Single-pass type I membrane protein.

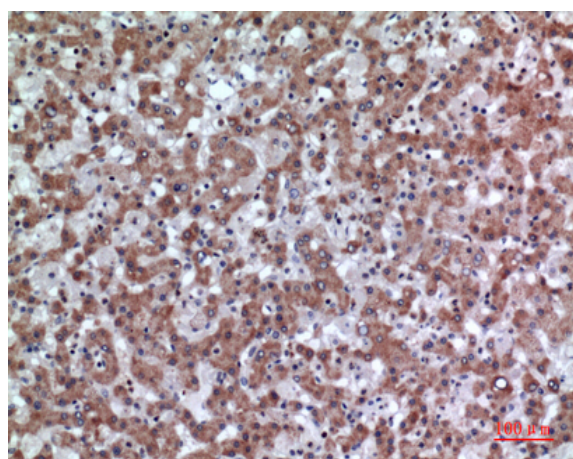
**Location :**

**Expression :** Blood,Brain,Fetal brain,

## Products Images



Western Blot analysis of PC12 cells using CD200 Polyclonal Antibody. Secondary antibody(catalog#:RS0002) was diluted at 1:20000



Immunohistochemical analysis of paraffin-embedded human-liver, antibody was diluted at 1:100