

## SEC22B Polyclonal Antibody

<b>Catalog No :</b>	YT5680
<b>Reactivity :</b>	Human;Mouse;Rat
<b>Applications :</b>	WB;IHC;IF;ELISA
<b>Target :</b>	SEC22B
<b>Fields :</b>	>>SNARE interactions in vesicular transport;>>Phagosome;>>Legionellosis
<b>Gene Name :</b>	SEC22B
<b>Protein Name :</b>	Vesicle-trafficking protein SEC22b
<b>Human Gene Id :</b>	9554
<b>Human Swiss Prot No :</b>	O75396
<b>Mouse Gene Id :</b>	20333
<b>Mouse Swiss Prot No :</b>	O08547
<b>Rat Gene Id :</b>	310710
<b>Rat Swiss Prot No :</b>	Q4KM74
<b>Immunogen :</b>	Synthesized peptide derived from the Internal region of human SEC22B.
<b>Specificity :</b>	SEC22B Polyclonal Antibody detects endogenous levels of SEC22B protein.
<b>Formulation :</b>	Liquid in PBS containing 50% glycerol, 0.5% BSA and 0.02% sodium azide.
<b>Source :</b>	Polyclonal, Rabbit,IgG
<b>Dilution :</b>	WB 1:500 - 1:2000. IHC: 1:100-1:300. ELISA: 1:10000.. IF 1:50-200
<b>Purification :</b>	The antibody was affinity-purified from rabbit antiserum by affinity-

chromatography using epitope-specific immunogen.

---

**Concentration :** 1 mg/ml

---

**Storage Stability :** -15°C to -25°C/1 year(Do not lower than -25°C)

---

**Observed Band :** 23kD

---

**Cell Pathway :** SNARE interactions in vesicular transport;

---

**Background :** The protein encoded by this gene is a member of the SEC22 family of vesicle trafficking proteins. It seems to complex with SNARE and it is thought to play a role in the ER-Golgi protein trafficking. This protein has strong similarity to Mus musculus and Cricetulus griseus proteins.[provided by RefSeq, Sep 2009],

---

**Function :** function:SNARE involved in targeting and fusion of ER-derived transport vesicles with the Golgi complex as well as Golgi-derived retrograde transport vesicles with the ER.,PTM:Phosphorylated upon DNA damage, probably by ATM or ATR.,similarity:Belongs to the synaptobrevin family.,similarity:Contains 1 longin domain.,similarity:Contains 1 v-SNARE coiled-coil homology domain.,subcellular location:Identified by mass spectrometry in melanosome fractions from stage I to stage IV.,subunit:Component of two distinct SNARE complexes consisting of STX5, GOSR2/BOS1, BET1 and SEC22B or STX18, USE1L, BNIP1/SEC20L and SEC22B. YKT6 can probably replace SEC22B in either complex.,

---

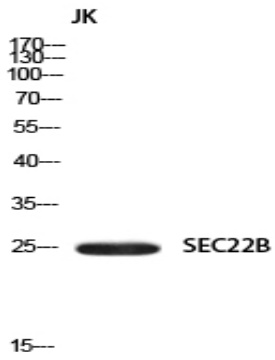
**Subcellular Location :** Endoplasmic reticulum membrane ; Single-pass type IV membrane protein . Endoplasmic reticulum-Golgi intermediate compartment membrane . Golgi apparatus, cis-Golgi network membrane . Golgi apparatus, trans-Golgi network membrane . Melanosome . Concentrated most in the intermediate compartment/cis-Golgi network and the cis-Golgi cisternae 1 and 2. Greatly reduced in concentration at the trans end of the Golgi apparatus (By similarity). Identified by mass spectrometry in melanosome fractions from stage I to stage IV (PubMed:17081065). .

---

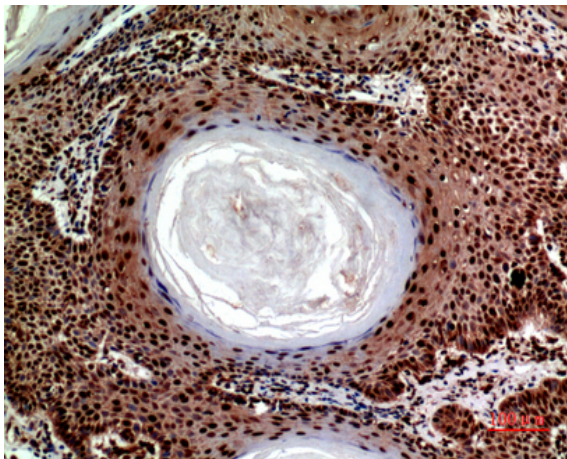
**Expression :** Caudate nucleus,Platelet,Skin,Umbilical cor

---

## Products Images



Western blot analysis of JK using SEC22B antibody. Secondary antibody(catalog#:RS0002) was diluted at 1:20000



Immunohistochemical analysis of paraffin-embedded human-skin, antibody was diluted at 1:100