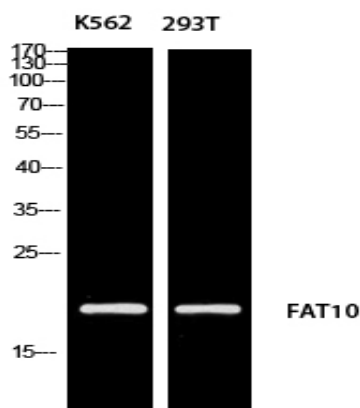


FAT10 Polyclonal Antibody

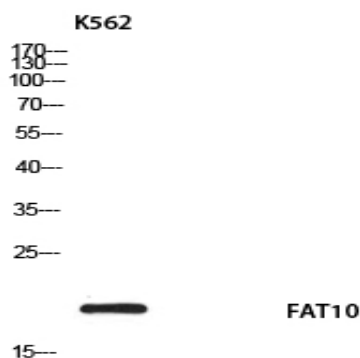
| | |
|------------------------------|---|
| Catalog No : | YT5678 |
| Reactivity : | Human;Rat;Mouse; |
| Applications : | WB;ELISA |
| Target : | FAT10 |
| Gene Name : | UBD |
| Protein Name : | Ubiquitin D |
| Human Gene Id : | 10537 |
| Human Swiss Prot No : | O15205 |
| Mouse Swiss Prot No : | P63072 |
| Immunogen : | Synthesized peptide derived from the Internal region of human FAT10. |
| Specificity : | FAT10 Polyclonal Antibody detects endogenous levels of FAT10 protein. |
| Formulation : | Liquid in PBS containing 50% glycerol, 0.5% BSA and 0.02% sodium azide. |
| Source : | Polyclonal, Rabbit,IgG |
| Dilution : | WB 1:500 - 1:2000. ELISA: 1:10000. Not yet tested in other applications. |
| Purification : | The antibody was affinity-purified from rabbit antiserum by affinity-chromatography using epitope-specific immunogen. |
| Concentration : | 1 mg/ml |
| Storage Stability : | -15°C to -25°C/1 year(Do not lower than -25°C) |
| Observed Band : | 18kD |

| | |
|-------------------------------|--|
| Background : | <u>similarity:Contains 2 ubiquitin-like domains.,subunit:Interacts with MAD2.,</u> |
| Function : | <u>similarity:Contains 2 ubiquitin-like domains.,subunit:Interacts with MAD2.,</u> |
| Subcellular Location : | <u>Nucleus . Cytoplasm . Accumulates in aggresomes under proteasome inhibition conditions.</u> |
| Expression : | <u>Constitutively expressed in mature dendritic cells and B-cells. Mostly expressed in the reticuloendothelial system (e.g. thymus, spleen), the gastrointestinal system, kidney, lung and prostate gland.</u> |

Products Images



Western blot analysis of K562 293T using FAT10 antibody. Antibody was diluted at 1:1000. Secondary antibody(catalog#:RS0002) was diluted at 1:20000



Western blot analysis of K562 using FAT10 antibody. Antibody was diluted at 1:1000. Secondary antibody(catalog#:RS0002) was diluted at 1:20000