

D3DR Polyclonal Antibody

Catalog No :	YT5448
Reactivity :	Human;Mouse;Rat
Applications :	WB;ELISA
Target :	D3DR
Fields :	>>Neuroactive ligand-receptor interaction;>>Dopaminergic synapse
Gene Name :	DRD3
Protein Name :	D(3) dopamine receptor
Human Gene Id :	1814
Human Swiss Prot No :	P35462
Mouse Gene Id :	13490
Mouse Swiss Prot No :	P30728
Rat Gene Id :	29238
Rat Swiss Prot No :	P19020
Immunogen :	Synthesized peptide derived from D3DR . at AA range: 181-230
Specificity :	D3DR Polyclonal Antibody detects endogenous levels of D3DR protein.
Formulation :	Liquid in PBS containing 50% glycerol, 0.5% BSA and 0.02% sodium azide.
Source :	Polyclonal, Rabbit,IgG
Dilution :	WB 1:500 - 1:2000. ELISA: 1:20000. Not yet tested in other applications.
Purification :	The antibody was affinity-purified from rabbit antiserum by affinity-

chromatography using epitope-specific immunogen.

Concentration : 1 mg/ml

Storage Stability : -15°C to -25°C/1 year(Do not lower than -25°C)

Observed Band : 44kD

Cell Pathway : Neuroactive ligand-receptor interaction;

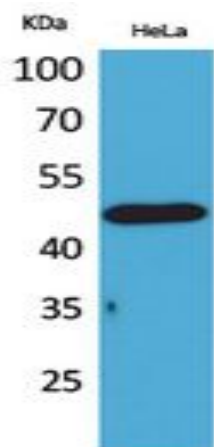
Background : This gene encodes the D3 subtype of the five (D1-D5) dopamine receptors. The activity of the D3 subtype receptor is mediated by G proteins which inhibit adenylyl cyclase. This receptor is localized to the limbic areas of the brain, which are associated with cognitive, emotional, and endocrine functions. Genetic variation in this gene may be associated with susceptibility to hereditary essential tremor 1. Alternative splicing of this gene results in transcript variants encoding different isoforms, although some variants may be subject to nonsense-mediated decay (NMD). [provided by RefSeq, Jul 2008],

Function : disease:Genetic variation in DRD3 may be associated with susceptibility to hereditary essential tremor 1 (ETM1) [MIM:190300]. ETM1 is the most common movement disorder. The main feature is postural tremor of the arms. Head, legs, trunk, voice, jaw, and facial muscles also may be involved. The condition can be aggravated by emotions, hunger, fatigue and temperature extremes, and may cause a functional disability or even incapacitation. Inheritance is autosomal dominant.,function:This is one of the five types (D1 to D5) of receptors for dopamine. The activity of this receptor is mediated by G proteins which inhibit adenylyl cyclase.,online information:The Singapore human mutation and polymorphism database,similarity:Belongs to the G-protein coupled receptor 1 family.,subunit:Interacts with CLIC6.,tissue specificity:Brain.,

Subcellular Location : Cell membrane ; Multi-pass membrane protein . Both membrane-bound and scattered in the cytoplasm during basal conditions. Receptor stimulation results in the rapid internalization and sequestration of the receptors at the perinuclear area (5 and 15 minutes), followed by the dispersal of the receptors to the membrane (30 minutes). DRD3 and GRK4 co-localize in lipid rafts of renal proximal tubule cells.

Expression : Brain.

Products Images



Western Blot analysis of HeLa cells using D3DR Polyclonal Antibody. Secondary antibody(catalog#:RS0002) was diluted at 1:20000