

CyPB Polyclonal Antibody

Catalog No :	YT5436
Reactivity :	Human;Mouse;Rat
Applications :	WB;ELISA
Target :	CyPB
Gene Name :	PPIB
Protein Name :	Peptidyl-prolyl cis-trans isomerase B
Human Gene Id :	5479
Human Swiss Prot No :	P23284
Mouse Gene Id :	19035
Mouse Swiss Prot No :	P24369
Rat Gene Id :	64367
Rat Swiss Prot No :	P24368
Immunogen :	The antiserum was produced against synthesized peptide derived from the C-terminal region of human PPIB. AA range:151-200
Specificity :	CyPB Polyclonal Antibody detects endogenous levels of CyPB protein.
Formulation :	Liquid in PBS containing 50% glycerol, 0.5% BSA and 0.02% sodium azide.
Source :	Polyclonal, Rabbit,IgG
Dilution :	WB 1:500 - 1:2000. ELISA: 1:20000. Not yet tested in other applications.
Purification :	The antibody was affinity-purified from rabbit antiserum by affinity-chromatography using epitope-specific immunogen.

Concentration : 1 mg/ml

Storage Stability : -15°C to -25°C/1 year(Do not lower than -25°C)

Observed Band : 24kD

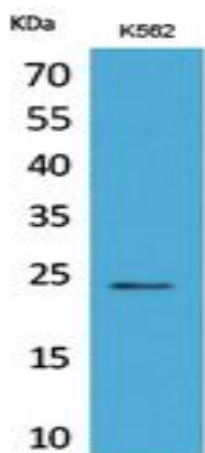
Background : The protein encoded by this gene is a cyclosporine-binding protein and is mainly located within the endoplasmic reticulum. It is associated with the secretory pathway and released in biological fluids. This protein can bind to cells derived from T- and B-lymphocytes, and may regulate cyclosporine A-mediated immunosuppression. Variants have been identified in this protein that give rise to recessive forms of osteogenesis imperfecta. [provided by RefSeq, Oct 2009],

Function : catalytic activity:Peptidylproline (omega=180) = peptidylproline (omega=0).,caution:It is uncertain whether Met-1 or Met-9 is the initiator.,enzyme regulation:Cyclosporin A (CsA) inhibits CYPB.,function:PPIases accelerate the folding of proteins. It catalyzes the cis-trans isomerization of proline imidic peptide bonds in oligopeptides.,similarity:Belongs to the cyclophilin-type PPIase family. PPIase B subfamily.,similarity:Contains 1 PPIase cyclophilin-type domain.,subcellular location:Identified by mass spectrometry in melanosome fractions from stage I to stage IV.,

Subcellular Location : Virion . (Microbial infection).; Endoplasmic reticulum lumen . Melanosome . Identified by mass spectrometry in melanosome fractions from stage I to stage IV (PubMed:17081065). .

Expression : Brain,Fetal brain cortex,Prostate,Skin,

Products Images



Western Blot analysis of K562 cells using CyPB Polyclonal Antibody. Secondary antibody(catalog#:RS0002) was diluted at 1:20000