

## Nov Polyclonal Antibody

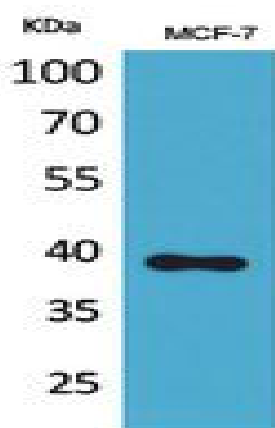
<b>Catalog No :</b>	YT5412
<b>Reactivity :</b>	Human;Mouse
<b>Applications :</b>	WB;IHC;IF;ELISA
<b>Target :</b>	Nov
<b>Gene Name :</b>	NOV
<b>Protein Name :</b>	Protein NOV homolog
<b>Human Gene Id :</b>	4856
<b>Human Swiss Prot No :</b>	P48745
<b>Mouse Gene Id :</b>	18133
<b>Mouse Swiss Prot No :</b>	Q64299
<b>Rat Gene Id :</b>	81526
<b>Rat Swiss Prot No :</b>	Q9QZQ5
<b>Immunogen :</b>	The antiserum was produced against synthesized peptide derived from the Internal region of human NOV. AA range:221-270
<b>Specificity :</b>	Nov Polyclonal Antibody detects endogenous levels of Nov protein.
<b>Formulation :</b>	Liquid in PBS containing 50% glycerol, 0.5% BSA and 0.02% sodium azide.
<b>Source :</b>	Polyclonal, Rabbit,IgG
<b>Dilution :</b>	WB 1:500 - 1:2000. IHC: 1:100-1:300. ELISA: 1:20000.. IF 1:50-200
<b>Purification :</b>	The antibody was affinity-purified from rabbit antiserum by affinity-chromatography using epitope-specific immunogen.

---

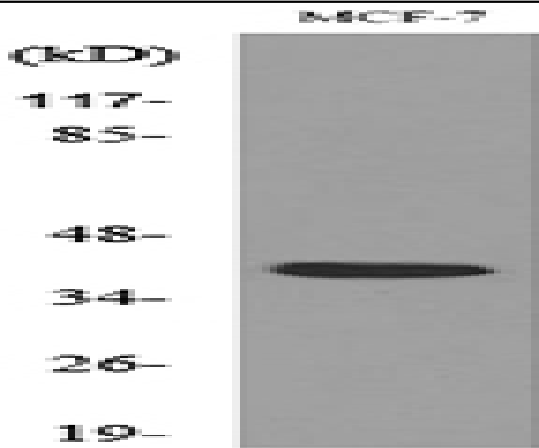
<b>Concentration :</b>	1 mg/ml
<b>Storage Stability :</b>	-15°C to -25°C/1 year(Do not lower than -25°C)
<b>Observed Band :</b>	39kD
<b>Background :</b>	The protein encoded by this gene is a small secreted cysteine-rich protein and a member of the CCN family of regulatory proteins. CNN family proteins associate with the extracellular matrix and play an important role in cardiovascular and skeletal development, fibrosis and cancer development. [provided by RefSeq, Feb 2009],
<b>Function :</b>	function:Immediate-early protein likely to play a role in cell growth regulation.,similarity:Belongs to the CCN family.,similarity:Contains 1 CTCK (C-terminal cystine knot-like) domain.,similarity:Contains 1 IGFBP N-terminal domain.,similarity:Contains 1 TSP type-1 domain.,similarity:Contains 1 VWFC domain.,subunit:Interacts with FBLN1.,tissue specificity:Increased expression in Wilms tumor of the stromal type.,
<b>Subcellular Location :</b>	Secreted. Cytoplasm . Cell junction, gap junction . Localizes at the gap junction in presence of GJA1. .
<b>Expression :</b>	Expressed in endiothelial cells (at protein level) (PubMed:21063504). Expressed in bone marrow, thymic cells and nephroblastoma. Increased expression in Wilms tumor of the stromal type.

---

## Products Images



Western Blot analysis of MCF-7 cells using Nov Polyclonal Antibody. Secondary antibody(catalog#:RS0002) was diluted at 1:20000



Western blot analysis of lysate from MCF-7 cells, using NOV Antibody.