

## CD315 Polyclonal Antibody

<b>Catalog No :</b>	YT5637
<b>Reactivity :</b>	Human;Mouse;Rat
<b>Applications :</b>	WB;IHC;IF;ELISA
<b>Target :</b>	CD315
<b>Gene Name :</b>	PTGFRN
<b>Protein Name :</b>	Prostaglandin F2 receptor negative regulator
<b>Human Gene Id :</b>	5738
<b>Human Swiss Prot No :</b>	Q9P2B2
<b>Mouse Gene Id :</b>	19221
<b>Mouse Swiss Prot No :</b>	Q9WV91
<b>Rat Gene Id :</b>	29602
<b>Rat Swiss Prot No :</b>	Q62786
<b>Immunogen :</b>	The antiserum was produced against synthesized peptide derived from the Internal region of human PTGFRN. AA range:601-650
<b>Specificity :</b>	CD315 Polyclonal Antibody detects endogenous levels of CD315 protein.
<b>Formulation :</b>	Liquid in PBS containing 50% glycerol, 0.5% BSA and 0.02% sodium azide.
<b>Source :</b>	Polyclonal, Rabbit,IgG
<b>Dilution :</b>	WB 1:500 - 1:2000. IHC: 1:100-300 ELISA: 1:20000. IF 1:100-300 Not yet tested in other applications.
<b>Purification :</b>	The antibody was affinity-purified from rabbit antiserum by affinity-chromatography using epitope-specific immunogen.

**Concentration :** 1 mg/ml

**Storage Stability :** -15°C to -25°C/1 year(Do not lower than -25°C)

**Observed Band :** 98kD

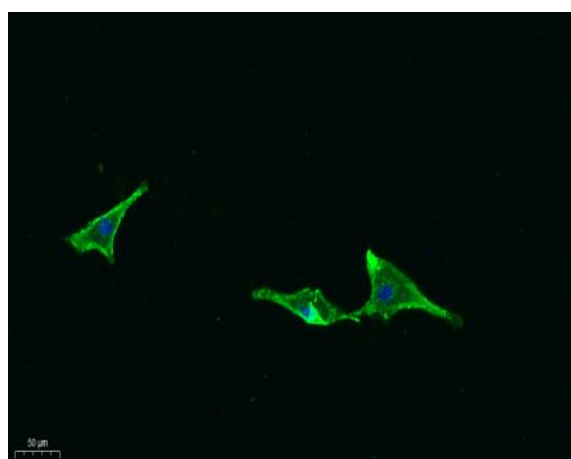
**Background :** function:Inhibits the binding of prostaglandin F2-alpha (PGF2-alpha) to its specific FP receptor, by decreasing the receptor number rather than the affinity constant. Functional coupling with the prostaglandin F2-alpha receptor seems to occur.,sequence caution:Translated as Gln.,similarity:Contains 6 Ig-like C2-type (immunoglobulin-like) domains.,subunit:Interacts with CD9 and CD81. Also seems to interact with CD63, CD82 and CD151.,

**Function :** function:Inhibits the binding of prostaglandin F2-alpha (PGF2-alpha) to its specific FP receptor, by decreasing the receptor number rather than the affinity constant. Functional coupling with the prostaglandin F2-alpha receptor seems to occur.,sequence caution:Translated as Gln.,similarity:Contains 6 Ig-like C2-type (immunoglobulin-like) domains.,subunit:Interacts with CD9 and CD81. Also seems to interact with CD63, CD82 and CD151.,

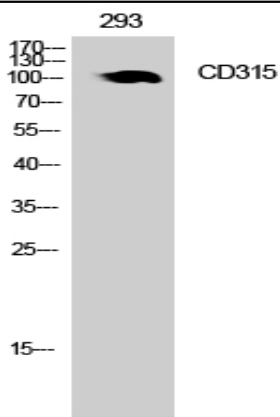
**Subcellular Location :** Endoplasmic reticulum membrane ; Single-pass type I membrane protein . Golgi apparatus, trans-Golgi network membrane ; Single-pass type I membrane protein .

**Expression :** Brain,Embryo,Epithelium,Heart,Liver,PCR rescued clones,

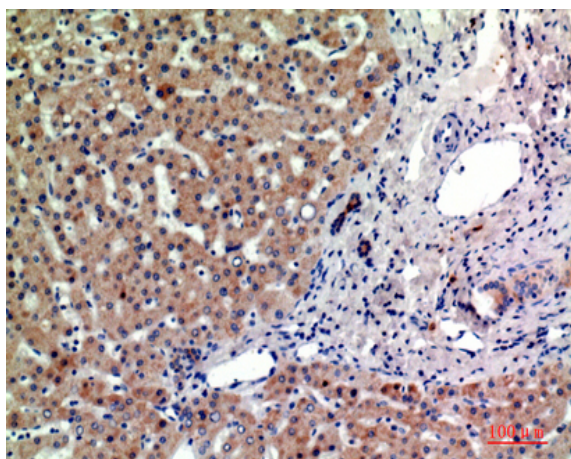
## Products Images



Immunofluorescence analysis of A549. 1,primary Antibody was diluted at 1:200(4°C overnight). 2, Goat Anti Rabbit IgG (H&L) - Alexa Fluor 488 Secondary antibody was diluted at 1:1000(room temperature, 50min).3, Picture B: DAPI(blue) 10min.



Western Blot analysis of 293 cells using CD315 Polyclonal Antibody. Secondary antibody(catalog#:RS0002) was diluted at 1:20000



Immunohistochemical analysis of paraffin-embedded human-liver, antibody was diluted at 1:200