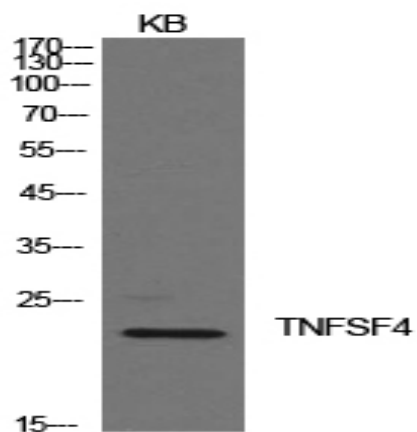


Ox40L Polyclonal Antibody

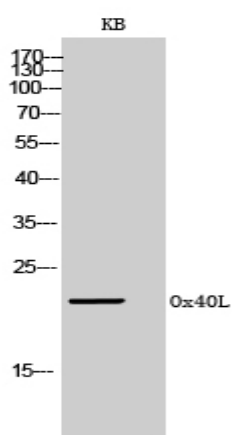
Catalog No :	YT5620
Reactivity :	Human;Rat;Mouse;
Applications :	WB;IHC;IF;ELISA
Target :	Ox40L
Fields :	>>Cytokine-cytokine receptor interaction
Gene Name :	TNFSF4
Protein Name :	Tumor necrosis factor ligand superfamily member 4
Human Gene Id :	7292
Human Swiss Prot No :	P23510
Mouse Gene Id :	22164
Mouse Swiss Prot No :	P43488
Rat Gene Id :	89814
Rat Swiss Prot No :	Q9Z2P3
Immunogen :	The antiserum was produced against synthesized peptide derived from the Internal region of human TNFSF4. AA range:31-80
Specificity :	Ox40L Polyclonal Antibody detects endogenous levels of Ox40L protein.
Formulation :	Liquid in PBS containing 50% glycerol, 0.5% BSA and 0.02% sodium azide.
Source :	Polyclonal, Rabbit,IgG
Dilution :	WB 1:500 - 1:2000. IHC: 1:100-1:300. IF 1:100-1:300. ELISA: 1:10000. Not yet tested in other applications.

Purification :	The antibody was affinity-purified from rabbit antiserum by affinity-chromatography using epitope-specific immunogen.
Concentration :	1 mg/ml
Storage Stability :	-15°C to -25°C/1 year(Do not lower than -25°C)
Observed Band :	21kD
Cell Pathway :	Cytokine-cytokine receptor interaction;
Background :	This gene encodes a cytokine of the tumor necrosis factor (TNF) ligand family. The encoded protein functions in T cell antigen-presenting cell (APC) interactions and mediates adhesion of activated T cells to endothelial cells. Polymorphisms in this gene have been associated with Sjogren's syndrome and systemic lupus erythematosus. Alternative splicing results in multiple transcript variants. [provided by RefSeq, Jul 2014],
Function :	disease:Genetic variation in TNFSF4 influences susceptibility to systemic lupus erythematosus (SLE) [MIM:152700]. SLE is a chronic, inflammatory and often febrile multisystemic disorder of connective tissue. It affects principally the skin, joints, kidneys and serosal membranes. It is thought to represent a failure of the regulatory mechanisms of the autoimmune system.,function:Cytokine that binds to TNFRSF4. Co-stimulates T-cell proliferation and cytokine production.,induction:By human T-cell leukemia virus type I transactivator P40-TAX.,similarity:Belongs to the tumor necrosis factor family.,subunit:Homotrimer.,
Subcellular Location :	Membrane; Single-pass type II membrane protein.
Expression :	Testis,

Products Images



Western Blot analysis of KB cells using Ox40L Polyclonal Antibody. Secondary antibody(catalog#:RS0002) was diluted at 1:20000



Western Blot analysis of KB cells using Ox40L Polyclonal Antibody. Secondary antibody(catalog#:RS0002) was diluted at 1:20000