

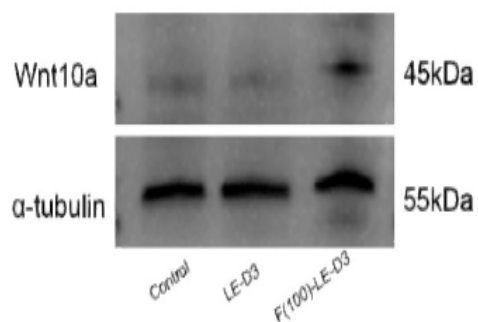
WN10A Polyclonal Antibody

Catalog No :	YN0283
Reactivity :	Human;Mouse;Goat;Human
Applications :	WB;ELISA
Target :	WN10A
Fields :	>>mTOR signaling pathway;>>Wnt signaling pathway;>>Hippo signaling pathway;>>Signaling pathways regulating pluripotency of stem cells;>>Melanogenesis;>>Cushing syndrome;>>Alzheimer disease;>>Pathways of neurodegeneration - multiple diseases;>>Human papillomavirus infection;>>Pathways in cancer;>>Proteoglycans in cancer;>>Basal cell carcinoma;>>Breast cancer;>>Hepatocellular carcinoma;>>Gastric cancer
Gene Name :	WNT10A
Protein Name :	Protein Wnt-10a
Human Gene Id :	80326
Human Swiss Prot No :	Q9GZT5
Mouse Swiss Prot No :	P70701
Immunogen :	Synthesized peptide derived from human protein . at AA range: 110-190
Specificity :	WN10A Polyclonal Antibody detects endogenous levels of protein.
Formulation :	Liquid in PBS containing 50% glycerol, and 0.02% sodium azide.
Source :	Polyclonal, Rabbit,IgG
Dilution :	WB 1:500-2000 ELISA 1:5000-20000
Purification :	The antibody was affinity-purified from rabbit antiserum by affinity-chromatography using epitope-specific immunogen.

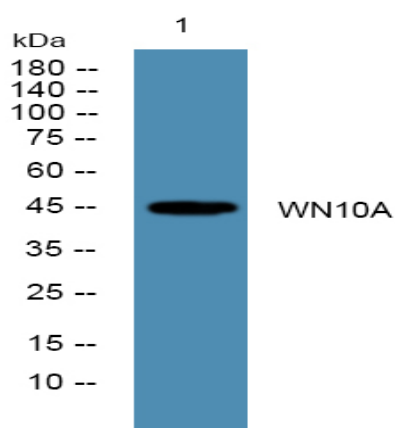
Concentration :	1 mg/ml
Storage Stability :	-15°C to -25°C/1 year(Do not lower than -25°C)
Observed Band :	45kD
Cell Pathway :	WNT;WNT-T CELLHedgehog;Melanogenesis;Pathways in cancer;Basal cell carcinoma;
Background :	<p>The WNT gene family consists of structurally related genes which encode secreted signaling proteins. These proteins have been implicated in oncogenesis and in several developmental processes, including regulation of cell fate and patterning during embryogenesis. This gene is a member of the WNT gene family. It is strongly expressed in the cell lines of promyelocytic leukemia and Burkitt's lymphoma. In addition, it and another family member, the WNT6 gene, are strongly coexpressed in colorectal cancer cell lines. The gene overexpression may play key roles in carcinogenesis through activation of the WNT-beta-catenin-TCF signaling pathway. This gene and the WNT6 gene are clustered in the chromosome 2q35 region. [provided by RefSeq, Jul 2008],</p>
Function :	<p>disease:Defects in WNT10A are the cause of odonto-onycho-dermal dysplasia (OODD) [MIM:257980]. OODD is a rare autosomal recessive ectodermal dysplasia in which the presenting phenotype is dry hair, severe hypodontia, smooth tongue with marked reduction of fungiform and filiform papillae, onychodysplasia, keratoderma and hyperhidrosis of palms and soles, and hyperkeratosis of the skin.,function:Ligand for members of the frizzled family of seven transmembrane receptors.,function:Ligand for members of the frizzled family of seven transmembrane receptors. Probable developmental protein. May be a signaling molecule important in CNS development. Is likely to signal over only few cell diameters.,similarity:Belongs to the Wnt family.,</p>
Subcellular Location :	Secreted, extracellular space, extracellular matrix . Secreted .
Expression :	Brain,Pancreas,Placenta,Skin,Thymus,

Products Images

0



Fullerol rescues the light-induced retinal damage by modulating Müller glia cell fate. Redox Biology Haiwei Xu WB Mouse, Human 1:1000 eyes MIO-M1 cell



Western blot analysis of lysates from K562 cells, primary antibody was diluted at 1:1000, 4° over night