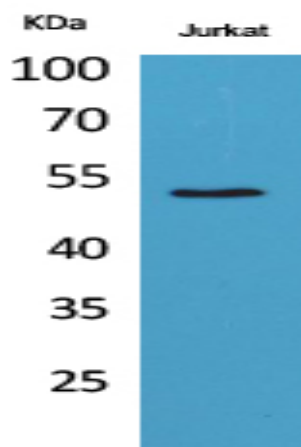


Tubulin α Polyclonal Antibody

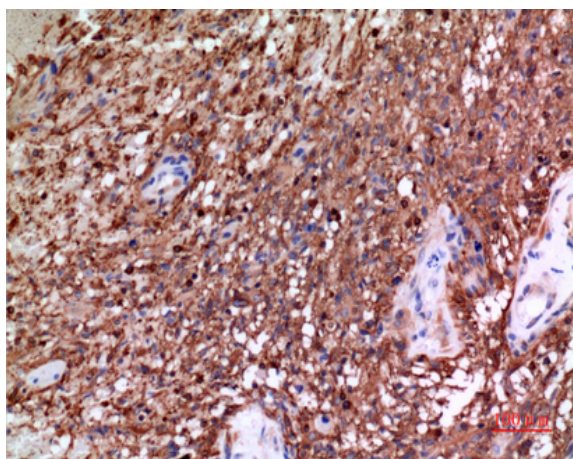
Catalog No :	YT5345
Reactivity :	Human;Mouse;Rat
Applications :	WB;IHC;IF;ELISA
Target :	Tubulin α
Fields :	>>Phagosome;>>Apoptosis;>>Tight junction;>>Gap junction;>>Alzheimer disease;>>Parkinson disease;>>Amyotrophic lateral sclerosis;>>Huntington disease;>>Prion disease;>>Pathways of neurodegeneration - multiple diseases;>>Pathogenic Escherichia coli infection;>>Salmonella infection
Gene Name :	TUBA1A/TUBA1B/TUBA1C/TUBA3C/TUBA4A
Protein Name :	Tubulin alpha-1A chain/Tubulin alpha-1B chain/Tubulin alpha-1C chain/Tubulin alpha-3C/D chain/Tubulin alpha-4A chain
Human Gene Id :	7846
Human Swiss Prot No :	Q71U36
Mouse Gene Id :	22142
Mouse Swiss Prot No :	P68369
Rat Gene Id :	64158
Rat Swiss Prot No :	P68370
Immunogen :	The antiserum was produced against synthesized peptide derived from human TUBA1A around the non-acetylation site of Lys40. AA range:1-50
Specificity :	Tubulin α Polyclonal Antibody detects endogenous levels of Tubulin α protein.
Formulation :	Liquid in PBS containing 50% glycerol, 0.5% BSA and 0.02% sodium azide.
Source :	Polyclonal, Rabbit,IgG

Dilution :	<u>WB 1:500 - 1:2000. IHC: 1:100-1:300. ELISA: 1:20000.. IF 1:50-200</u>
Purification :	<u>The antibody was affinity-purified from rabbit antiserum by affinity-chromatography using epitope-specific immunogen.</u>
Concentration :	<u>1 mg/ml</u>
Storage Stability :	<u>-15°C to -25°C/1 year(Do not lower than -25°C)</u>
Observed Band :	<u>50kD</u>
Cell Pathway :	<u>Gap junction;Pathogenic Escherichia coli infection;</u>
Background :	<u>Microtubules of the eukaryotic cytoskeleton perform essential and diverse functions and are composed of a heterodimer of alpha and beta tubulins. The genes encoding these microtubule constituents belong to the tubulin superfamily, which is composed of six distinct families. Genes from the alpha, beta and gamma tubulin families are found in all eukaryotes. The alpha and beta tubulins represent the major components of microtubules, while gamma tubulin plays a critical role in the nucleation of microtubule assembly. There are multiple alpha and beta tubulin genes, which are highly conserved among species. This gene encodes alpha tubulin and is highly similar to the mouse and rat Tuba1 genes. Northern blotting studies have shown that the gene expression is predominantly found in morphologically differentiated neurologic cells. This gene is one of three alpha-tubulin genes in a cluster on chromosome 12q.</u>
Function :	<u>disease:Defects in TUBA1A are the cause of lissencephaly type 3 (LIS3) [MIM:611603]. LIS is characterized by a smooth brain surface due to the absence (agyria) or reduction (pachygyria) of surface convolutions. It is often associated with psychomotor retardation and seizures. LIS3 features include agyria or pachygyria or laminar heterotopia, severe mental retardation, motor delay, variable presence of seizures, and abnormalities of corpus callosum, hippocampus, cerebellar vermis and brainstem.,function:Tubulin is the major constituent of microtubules. It binds two moles of GTP, one at an exchangeable site on the beta chain and one at a non-exchangeable site on the alpha-chain.,PTM:Undergoes a tyrosination/detyrosination cycle, the cyclic removal and re-addition of a C-terminal tyrosine residue by the enzymes tubulin tyrosine carboxypeptidase (TTCP) and tubulin tyrosine ligase (TTL), resp</u>
Subcellular Location :	<u>Cytoplasm, cytoskeleton.</u>
Expression :	<u>Expressed at a high level in fetal brain.</u>

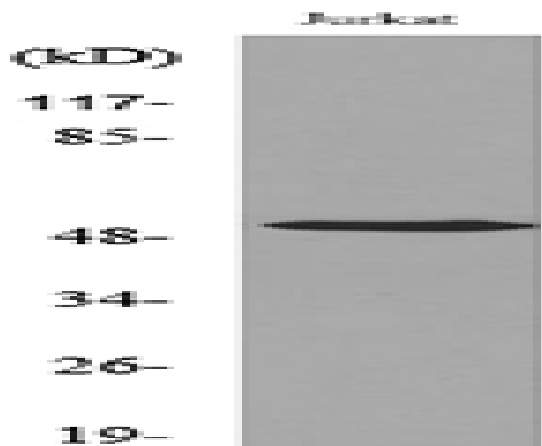
Products Images



Western Blot analysis of Jurkat cells using Tubulin α Polyclonal Antibody. Antibody was diluted at 1:1000. Secondary antibody(catalog#:RS0002) was diluted at 1:20000



Immunohistochemical analysis of paraffin-embedded human brain, antibody was diluted at 1:100



Western blot analysis of extracts from Jurkat cells, using TUBA1A (Ab-40) Antibody.