

Talin-1 Polyclonal Antibody

Catalog No :	YT5576
Reactivity :	Human;Mouse;Rat
Applications :	WB;IHC;IF;ELISA
Target :	Talin
Fields :	>>Rap1 signaling pathway;>>Focal adhesion;>>Platelet activation;>>Shigellosis;>>Human T-cell leukemia virus 1 infection
Gene Name :	TLN1
Protein Name :	Talin-1
Human Gene Id :	7094
Human Swiss Prot No :	Q9Y490
Mouse Gene Id :	21894
Mouse Swiss Prot No :	P26039
Immunogen :	The antiserum was produced against synthesized peptide derived from the C-terminal region of human TLN1. AA range:2471-2520
Specificity :	Talin-1 Polyclonal Antibody detects endogenous levels of Talin-1 protein.
Formulation :	Liquid in PBS containing 50% glycerol, 0.5% BSA and 0.02% sodium azide.
Source :	Polyclonal, Rabbit,IgG
Dilution :	WB 1:500 - 1:2000. IHC: 1:100-300 ELISA: 1:20000. IF 1:100-300 Not yet tested in other applications.
Purification :	The antibody was affinity-purified from rabbit antiserum by affinity-chromatography using epitope-specific immunogen.

Concentration : 1 mg/ml**Storage Stability :** -15°C to -25°C/1 year(Do not lower than -25°C)**Observed Band :** 269kD**Cell Pathway :** Focal adhesion;**Background :**

This gene encodes a cytoskeletal protein that is concentrated in areas of cell-substratum and cell-cell contacts. The encoded protein plays a significant role in the assembly of actin filaments and in spreading and migration of various cell types, including fibroblasts and osteoclasts. It codistributes with integrins in the cell surface membrane in order to assist in the attachment of adherent cells to extracellular matrices and of lymphocytes to other cells. The N-terminus of this protein contains elements for localization to cell-extracellular matrix junctions. The C-terminus contains binding sites for proteins such as beta-1-integrin, actin, and vinculin. [provided by RefSeq, Feb 2009],

Function :

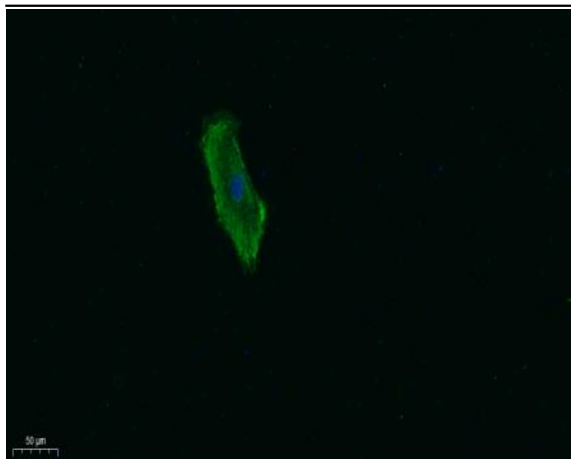
function:Probably involved in connections of major cytoskeletal structures to the plasma membrane. High molecular weight cytoskeletal protein concentrated at regions of cell-substratum contact and, in lymphocytes, at cell-cell contacts.,similarity:Contains 1 FERM domain.,similarity:Contains 1 I/LWEQ domain.,subcellular location:Colocalizes with LAYN at the membrane ruffles.,subunit:Binds with high affinity to vinculin and with low affinity to integrins. Interacts with PIP5K1C and NRAP. Interacts with LAYN. Interacts with SYNM.,

Subcellular Location :

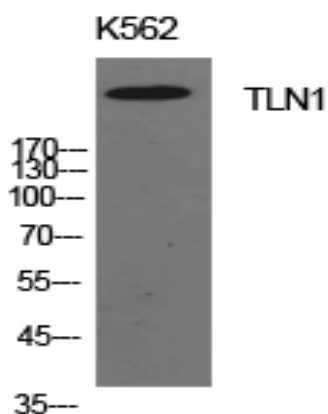
Cell projection, ruffle membrane ; Peripheral membrane protein ; Cytoplasmic side . Cytoplasm, cytoskeleton . Cell surface . Cell junction, focal adhesion . Colocalizes with LAYN at the membrane ruffles. Localized preferentially in focal adhesions than fibrillar adhesions (By similarity). .

Expression : Aorta,Brain,Embryonic carcinoma,Platelet,

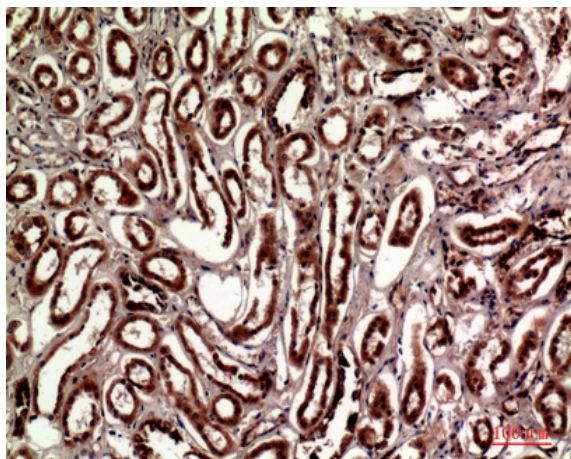
Products Images



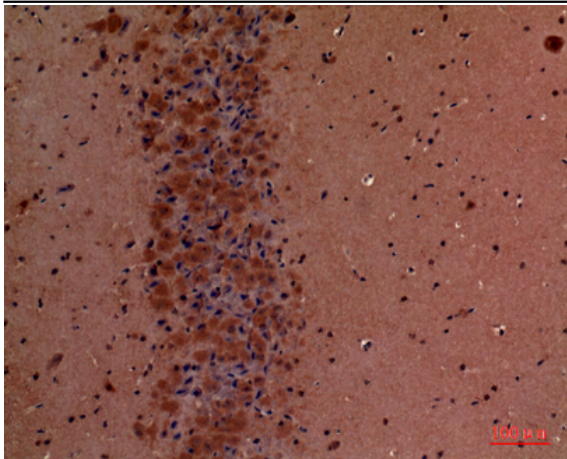
Immunofluorescence analysis of A549. 1,primary Antibody was diluted at 1:200(4°C overnight). 2, Goat Anti Rabbit IgG (H&L) - Alexa Fluor 488 Secondary antibody was diluted at 1:1000(room temperature, 50min).3, Picture B: DAPI(blue) 10min.



Western Blot analysis of K562 cells using Talin-1 Polyclonal Antibody. Antibody was diluted at 1:1000. Secondary antibody(catalog#:RS0002) was diluted at 1:20000



Immunohistochemical analysis of paraffin-embedded human-kidney, antibody was diluted at 1:100



Immunohistochemical analysis of paraffin-embedded mouse-brain, antibody was diluted at 1:100