

CD89 Polyclonal Antibody

Catalog No :	YT5568
Reactivity :	Human;Rat;Mouse;
Applications :	WB;IHC;IF;ELISA
Target :	CD89
Fields :	>>Phagosome;>>Staphylococcus aureus infection
Gene Name :	FCAR
Protein Name :	Immunoglobulin alpha Fc receptor
Human Gene Id :	2204
Human Swiss Prot No :	P24071
Immunogen :	The antiserum was produced against synthesized peptide derived from the Internal region of human FCAR. AA range:31-80
Specificity :	CD89 Polyclonal Antibody detects endogenous levels of CD89 protein.
Formulation :	Liquid in PBS containing 50% glycerol, 0.5% BSA and 0.02% sodium azide.
Source :	Polyclonal, Rabbit,IgG
Dilution :	WB 1:500 - 1:2000. IHC: 1:100-1:300. ELISA: 1:10000.. IF 1:50-200
Purification :	The antibody was affinity-purified from rabbit antiserum by affinity-chromatography using epitope-specific immunogen.
Concentration :	1 mg/ml
Storage Stability :	-15°C to -25°C/1 year(Do not lower than -25°C)
Observed Band :	32kD

Background :

This gene is a member of the immunoglobulin gene superfamily and encodes a receptor for the Fc region of IgA. The receptor is a transmembrane glycoprotein present on the surface of myeloid lineage cells such as neutrophils, monocytes, macrophages, and eosinophils, where it mediates immunologic responses to pathogens. It interacts with IgA-opsonized targets and triggers several immunologic defense processes, including phagocytosis, antibody-dependent cell-mediated cytotoxicity, and stimulation of the release of inflammatory mediators. Multiple alternatively spliced transcript variants encoding different isoforms have been described for this gene. [provided by RefSeq, Jul 2008],

Function :

alternative products:Additional isoforms seem to exist,function:Binds to the Fc region of immunoglobulins alpha. Mediates several functions including cytokine production.,similarity:Contains 2 Ig-like C2-type (immunoglobulin-like) domains.,subunit:Associates with the Fc epsilon RI gamma 2 receptor inducing tyrosine phosphorylation of gamma 2.,tissue specificity:Differentially expressed between blood and mucosal myeloid cells. Monocytes express isoform A.1, isoform A.2 and isoform A.3 while alveolar macrophages express isoform A.1 and isoform A.2; however they express only one isoform at their surfaces.,

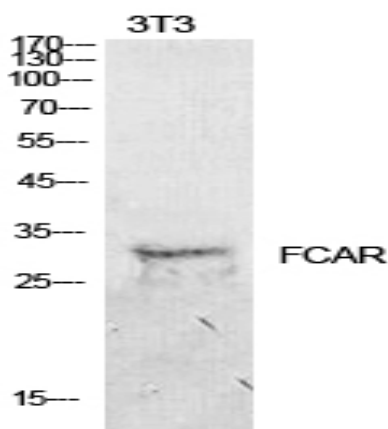
Subcellular Location :

[Isoform A.1]: Cell membrane; Single-pass type I membrane protein.; [Isoform A.2]: Cell membrane; Single-pass type I membrane protein.; [Isoform A.3]: Cell membrane; Single-pass type I membrane protein.; [Isoform B]: Secreted.; [Isoform B-delta-S2]: Secreted.

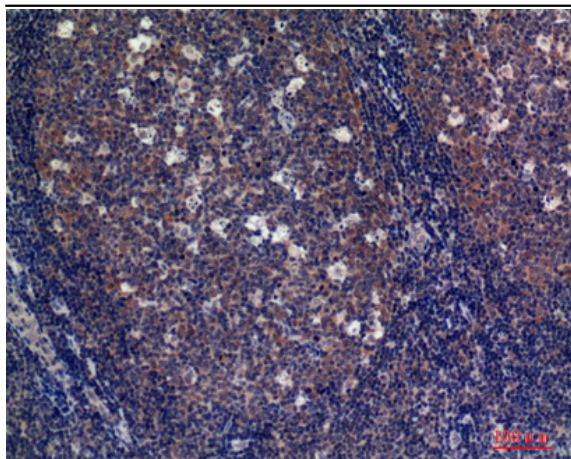
Expression :

Isoform A.1, isoform A.2 and isoform A.3 are differentially expressed between blood and mucosal myeloid cells. Isoform A.1, isoform A.2 and isoform A.3 are expressed in monocytes. Isoform A.1 and isoform A.2 are expressed in alveolar macrophages; however only one isoform is expressed at alveolar macrophages surfaces.

Products Images



Western Blot analysis of NIH-3T3 cells using CD89 Polyclonal Antibody. Secondary antibody(catalog#:RS0002) was diluted at 1:20000



Immunohistochemical analysis of paraffin-embedded human-tonsils, antibody was diluted at 1:100