

## IL-28 Polyclonal Antibody

|                              |  |
|------------------------------|--|
| <b>Catalog No :</b>          | YT5305   |
| <b>Reactivity :</b>          | Human;Mouse  |
| <b>Applications :</b>        | WB;IHC;IF;ELISA  |
| <b>Target :</b>              | IL-28  |
| <b>Fields :</b>              | >>Cytokine-cytokine receptor interaction;>>JAK-STAT signaling pathway  |
| <b>Gene Name :</b>           | IL28A  |
| <b>Protein Name :</b>        | Interleukin-28A  |
| <b>Human Gene Id :</b>       | 282616   |
| <b>Human Swiss Prot No :</b> | Q8IZJ0   |
| <b>Mouse Gene Id :</b>       | 330496   |
| <b>Mouse Swiss Prot No :</b> | Q4VK74   |
| <b>Immunogen :</b>           | The antiserum was produced against synthesized peptide derived from the C-terminal region of human IL28A. AA range:131-180 |
| <b>Specificity :</b>         | IL-28 Polyclonal Antibody detects endogenous levels of IL-28 protein.  |
| <b>Formulation :</b>         | Liquid in PBS containing 50% glycerol, 0.5% BSA and 0.02% sodium azide.  |
| <b>Source :</b>              | Polyclonal, Rabbit,IgG   |
| <b>Dilution :</b>            | WB 1:500 - 1:2000. IHC: 1:100-1:300. ELISA: 1:20000.. IF 1:50-200  |
| <b>Purification :</b>        | The antibody was affinity-purified from rabbit antiserum by affinity-chromatography using epitope-specific immunogen.      |
| <b>Concentration :</b>       | 1 mg/ml  |

**Storage Stability :** -15°C to -25°C/1 year(Do not lower than -25°C)

**Observed Band :** 25kD

**Cell Pathway :** Cytokine-cytokine receptor interaction;Jak\_STAT;

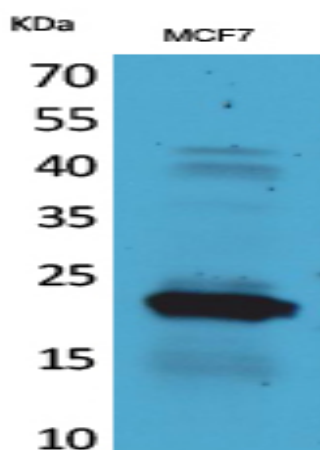
**Background :** This gene encodes a cytokine distantly related to type I interferons and the IL-10 family. This gene, interleukin 28B (IL28B), and interleukin 29 (IL29) are three closely related cytokine genes that form a cytokine gene cluster on a chromosomal region mapped to 19q13. Expression of the cytokines encoded by the three genes can be induced by viral infection. All three cytokines have been shown to interact with a heterodimeric class II cytokine receptor that consists of interleukin 10 receptor, beta (IL10RB) and interleukin 28 receptor, alpha (IL28RA). [provided by RefSeq, Jul 2008],

**Function :** caution:It is uncertain whether Met-1 or Met-5 is the initiator.,function:Cytokine with immunomodulatory activity. Up-regulates MHC class I antigen expression. Displays potent antiviral activity. Also displays antitumor activity. Ligand for the heterodimeric class II cytokine receptor composed of IL10RB and IL28RA. The ligand/receptor complex seems to signal through the Jak-STAT pathway.,induction:By viral infections or double stranded RNA.,online information:Interleukin-28 entry,similarity:Belongs to the IL-28/IL-29 family.,

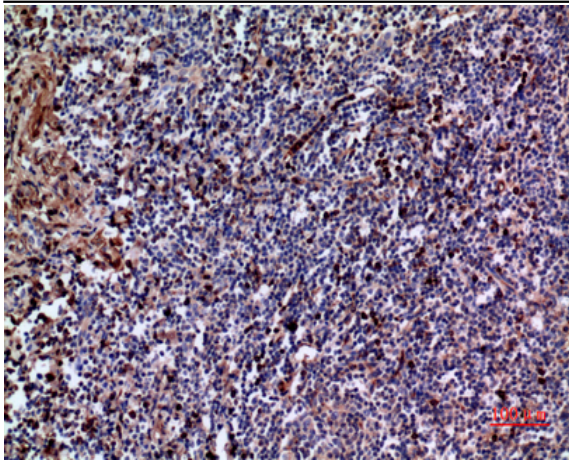
**Subcellular Location :** Secreted .

**Expression :** Pooled,

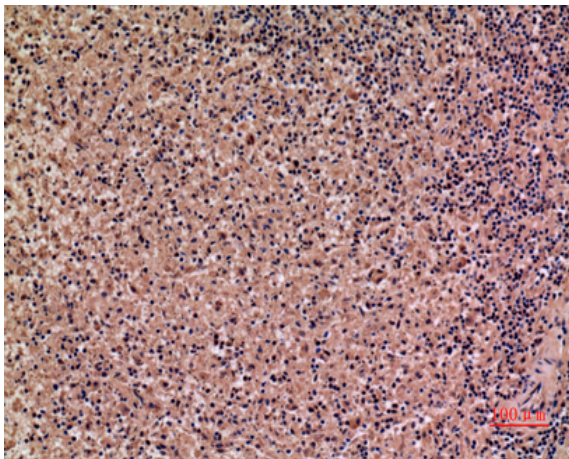
## Products Images



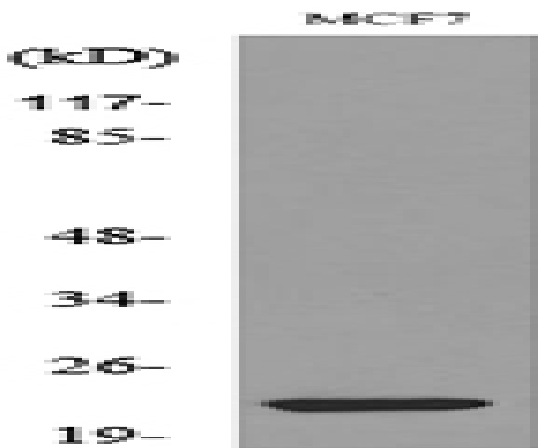
Western Blot analysis of MCF7 cells using IL-28 Polyclonal Antibody. Secondary antibody(catalog#:RS0002) was diluted at 1:20000



Immunohistochemical analysis of paraffin-embedded human tonsil, antibody was diluted at 1:100



Immunohistochemical analysis of paraffin-embedded human spleen, antibody was diluted at 1:100



Western blot analysis of lysate from MCF7 cells, using IL28A Antibody.