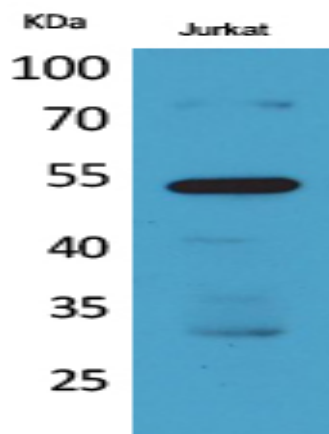


BMP-3A Polyclonal Antibody

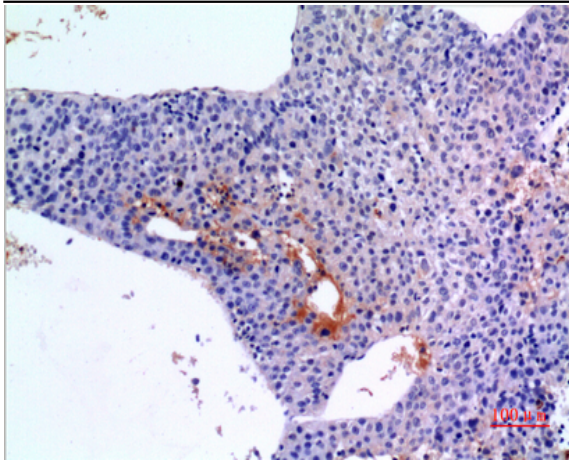
Catalog No :	YT5303
Reactivity :	Human;Mouse;Rat
Applications :	WB;IHC;IF;ELISA
Target :	BMP-3A
Fields :	>>Cytokine-cytokine receptor interaction
Gene Name :	BMP3
Protein Name :	Bone morphogenetic protein 3
Human Gene Id :	651
Human Swiss Prot No :	P12645
Mouse Gene Id :	110075
Mouse Swiss Prot No :	Q8BHE5
Rat Gene Id :	25667
Rat Swiss Prot No :	P49002
Immunogen :	The antiserum was produced against synthesized peptide derived from the C-terminal region of human BMP3. AA range:421-470
Specificity :	BMP-3A Polyclonal Antibody detects endogenous levels of BMP-3A protein.
Formulation :	Liquid in PBS containing 50% glycerol, 0.5% BSA and 0.02% sodium azide.
Source :	Polyclonal, Rabbit,IgG
Dilution :	WB 1:500 - 1:2000. IHC: 1:100-1:300. ELISA: 1:20000.. IF 1:50-200

Purification :	The antibody was affinity-purified from rabbit antiserum by affinity-chromatography using epitope-specific immunogen.
Concentration :	1 mg/ml
Storage Stability :	-15°C to -25°C/1 year(Do not lower than -25°C)
Observed Band :	53kD
Background :	This gene encodes a secreted ligand of the TGF-beta (transforming growth factor-beta) superfamily of proteins. Ligands of this family bind various TGF-beta receptors leading to recruitment and activation of SMAD family transcription factors that regulate gene expression. The encoded preprotein is proteolytically processed to generate each subunit of the disulfide-linked homodimer. This protein suppresses osteoblast differentiation, and negatively regulates bone density, by modulating TGF-beta receptor availability to other ligands. [provided by RefSeq, Jul 2016],
Function :	function:Negatively regulates bone density. Antagonizes the ability of certain osteogenic BMPs to induce osteoprogenitor differentiation and ossification.,induction:Highly expressed in fracture tissue, particularly in osteoblasts, osteoclasts and chondroblasts.,online information:Bone morphogenetic protein 3 entry,similarity:Belongs to the TGF-beta family.,subunit:Homodimer; disulfide-linked.,tissue specificity:Expressed in adult and fetal cartilage.,
Subcellular Location :	Secreted.
Expression :	Expressed in adult and fetal cartilage.

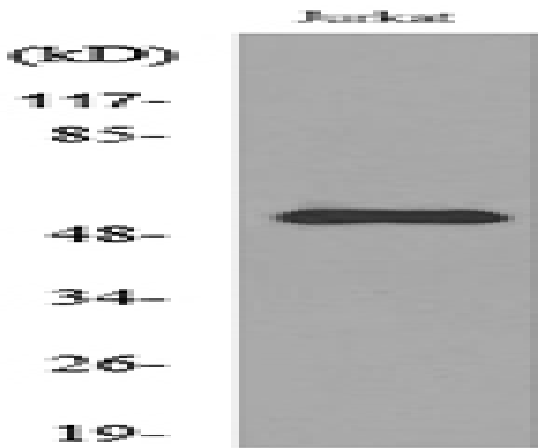
Products Images



Western Blot analysis of Jurkat cells using BMP-3A Polyclonal Antibody. Antibody was diluted at 1:500. Secondary antibody(catalog#:RS0002) was diluted at 1:20000



Immunohistochemical analysis of paraffin-embedded human-liver-cancer, antibody was diluted at 1:100



Western blot analysis of lysate from Jurkat cells, using BMP3 Antibody.