

CKR-4 Polyclonal Antibody

Catalog No :	YT5290
Reactivity :	Human;Mouse;Rat
Applications :	WB;IHC;IF;ELISA
Target :	CKR-4
Fields :	>>Cytokine-cytokine receptor interaction;>>Viral protein interaction with cytokine and cytokine receptor;>>Chemokine signaling pathway;>>Kaposi sarcoma-associated herpesvirus infection;>>Viral carcinogenesis
Gene Name :	CCR4
Protein Name :	C-C chemokine receptor type 4
Human Gene Id :	1233
Human Swiss Prot No :	P51679
Mouse Gene Id :	12773
Mouse Swiss Prot No :	P51680
Immunogen :	The antiserum was produced against synthesized peptide derived from the N-terminal region of human CCR4. AA range:1-50
Specificity :	CKR-4 Polyclonal Antibody detects endogenous levels of CKR-4 protein.
Formulation :	Liquid in PBS containing 50% glycerol, 0.5% BSA and 0.02% sodium azide.
Source :	Polyclonal, Rabbit,IgG
Dilution :	WB 1:500 - 1:2000. IHC: 1:100-300 ELISA: 1:20000.. IF 1:50-200
Purification :	The antibody was affinity-purified from rabbit antiserum by affinity-chromatography using epitope-specific immunogen.

Concentration : 1 mg/ml

Storage Stability : -15°C to -25°C/1 year(Do not lower than -25°C)

Observed Band : 41kD

Cell Pathway : Cytokine-cytokine receptor interaction;Chemokine;

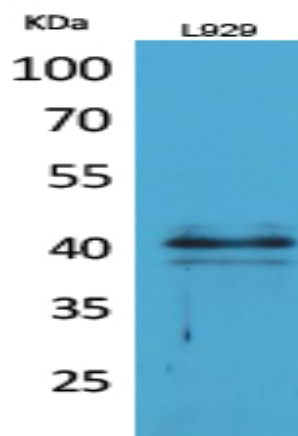
Background : The protein encoded by this gene belongs to the G-protein-coupled receptor family . It is a receptor for the CC chemokine - MIP-1, RANTES, TARC and MCP-1. Chemokines are a group of small polypeptide, structurally related molecules that regulate cell trafficking of various types of leukocytes. The chemokines also play fundamental roles in the development, homeostasis, and function of the immune system, and they have effects on cells of the central nervous system as well as on endothelial cells involved in angiogenesis or angiostasis. [provided by RefSeq, Jul 2008],

Function : function:High affinity receptor for the C-C type chemokines CCL17/TARC and CCL22/MDC. The activity of this receptor is mediated by G(i) proteins which activate a phosphatidylinositol-calcium second messenger system. Can function as a chemoattractant homing receptor on circulating memory lymphocytes and as a coreceptor for some primary HIV-2 isolates. In the CNS, could mediate hippocampal-neuron survival.,online information:CC chemokine receptors entry,PTM:In natural killer cells, CCL22 binding induces phosphorylation on yet undefined Ser/Thr residues, most probably by beta-adrenergic receptor kinases 1 and 2.,similarity:Belongs to the G-protein coupled receptor 1 family.,tissue specificity:Predominantly expressed in the thymus, in peripheral blood leukocytes, including T-cells, mostly CD4+ cells, and basophils, and in platelets; at lower levels, in the spleen and in monocytes. Detected a

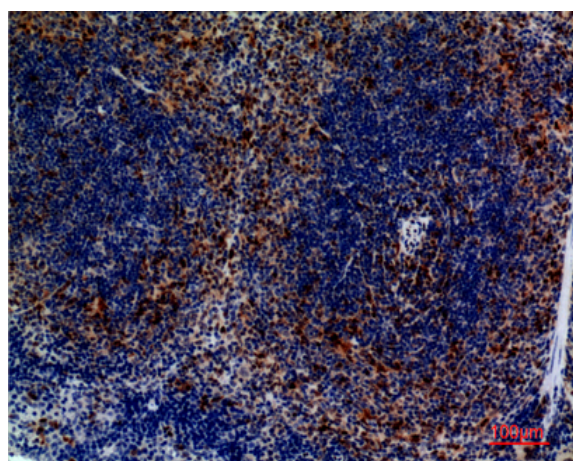
Subcellular Location : Cell membrane; Multi-pass membrane protein.

Expression : Predominantly expressed in the thymus, in peripheral blood leukocytes, including T-cells, mostly CD4+ cells, and basophils, and in platelets; at lower levels, in the spleen and in monocytes. Detected also in macrophages, IL-2-activated natural killer cells and skin-homing memory T-cells, mostly the ones expressing the cutaneous lymphocyte antigen (CLA). Expressed in brain microvascular and coronary artery endothelial cells.

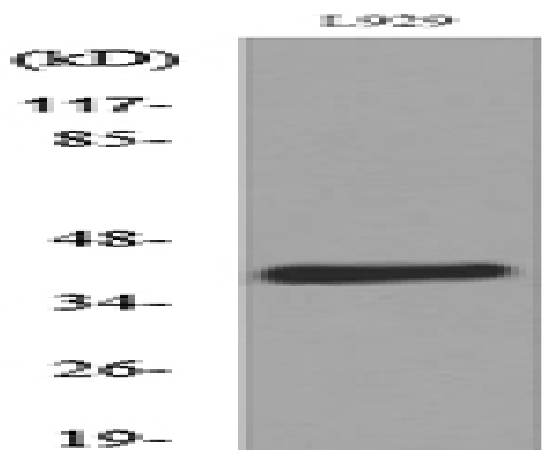
Products Images



Western Blot analysis of L929 cells using CKR-4 Polyclonal Antibody. Secondary antibody(catalog#:RS0002) was diluted at 1:20000



Immunohistochemical analysis of paraffin-embedded mouse-spleen, antibody was diluted at 1:100



Western blot analysis of lysate from L929 cells, using CCR4 Antibody.