

## CD241 Polyclonal Antibody

|                              |                                                                                                                        |
|------------------------------|------------------------------------------------------------------------------------------------------------------------|
| <b>Catalog No :</b>          | YT5284                                                                                                                 |
| <b>Reactivity :</b>          | Human;Rat;Mouse;                                                                                                       |
| <b>Applications :</b>        | WB;IHC;IF;ELISA                                                                                                        |
| <b>Target :</b>              | CD241                                                                                                                  |
| <b>Gene Name :</b>           | RHAG                                                                                                                   |
| <b>Protein Name :</b>        | Ammonium transporter Rh type A                                                                                         |
| <b>Human Gene Id :</b>       | 6005                                                                                                                   |
| <b>Human Swiss Prot No :</b> | Q02094                                                                                                                 |
| <b>Mouse Gene Id :</b>       | 19743                                                                                                                  |
| <b>Mouse Swiss Prot No :</b> | Q9QUT0                                                                                                                 |
| <b>Rat Gene Id :</b>         | 65207                                                                                                                  |
| <b>Rat Swiss Prot No :</b>   | Q7TNK7                                                                                                                 |
| <b>Immunogen :</b>           | The antiserum was produced against synthesized peptide derived from the N-terminal region of human RHAG. AA range:1-50 |
| <b>Specificity :</b>         | CD241 Polyclonal Antibody detects endogenous levels of CD241 protein.                                                  |
| <b>Formulation :</b>         | Liquid in PBS containing 50% glycerol, 0.5% BSA and 0.02% sodium azide.                                                |
| <b>Source :</b>              | Polyclonal, Rabbit,IgG                                                                                                 |
| <b>Dilution :</b>            | WB 1:500 - 1:2000. IHC: 1:100-300 ELISA: 1:20000.. IF 1:50-200                                                         |
| <b>Purification :</b>        | The antibody was affinity-purified from rabbit antiserum by affinity-chromatography using epitope-specific immunogen.  |

**Concentration :** 1 mg/ml

**Storage Stability :** -15°C to -25°C/1 year(Do not lower than -25°C)

**Observed Band :** 44kD

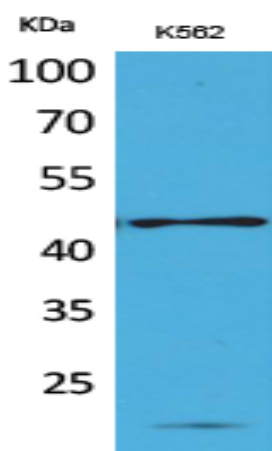
**Background :** The protein encoded by this gene is erythrocyte-specific and is thought to be part of a membrane channel that transports ammonium and carbon dioxide across the blood cell membrane. The encoded protein appears to interact with Rh blood group antigens and Rh30 polypeptides. Defects in this gene are a cause of regulator type Rh-null hemolytic anemia (RHN), or Rh-deficiency syndrome.[provided by RefSeq, Mar 2009],

**Function :** disease:Defects in RHAG are the cause of regulator type Rh-null hemolytic anemia (RHN) [MIM:268150]; also called Rh-deficiency syndrome. RHN is a form of chronic hemolytic anemia in which the red blood cells have a stomatocytosis and spherocytosis morphology, an increased osmotic fragility, an altered ion transport system, and abnormal membrane phospholipid organization.,function:Associated with rhesus blood group antigen expression. May be part of an oligomeric complex which is likely to have a transport or channel function in the erythrocyte membrane.,similarity:Belongs to the ammonium transporter (TC 2.A.49) family. Rh subfamily.,subunit:Heterotetramer.,tissue specificity:Erythrocytes.,

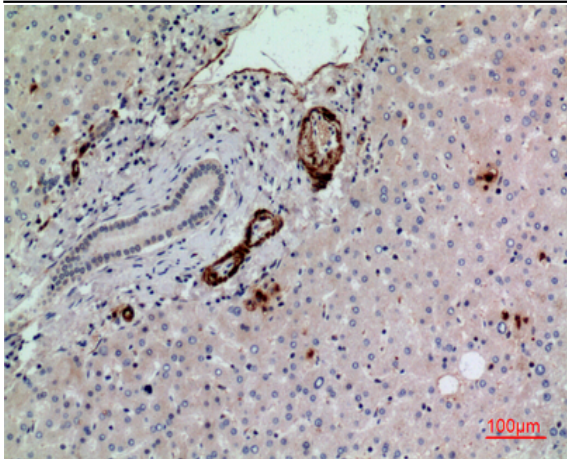
**Subcellular Location :** Membrane ; Multi-pass membrane protein.

**Expression :** Erythrocytes.

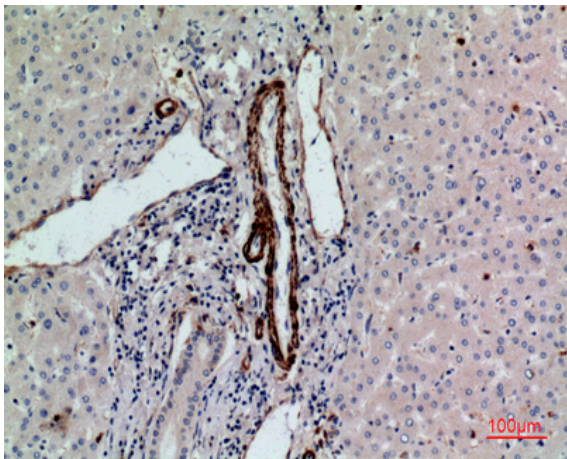
## Products Images



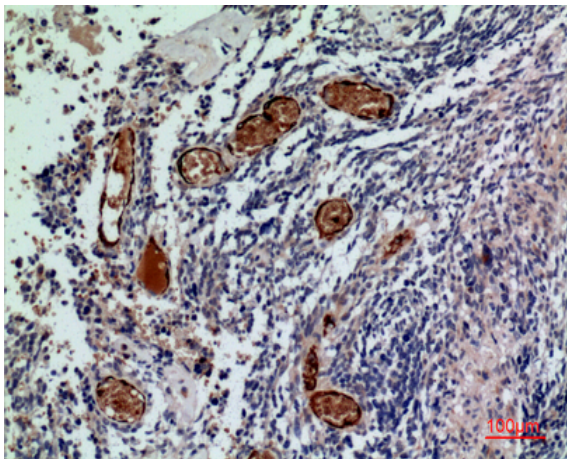
Western Blot analysis of K562 cells using CD241 Polyclonal Antibody. Secondary antibody(catalog#:RS0002) was diluted at 1:20000



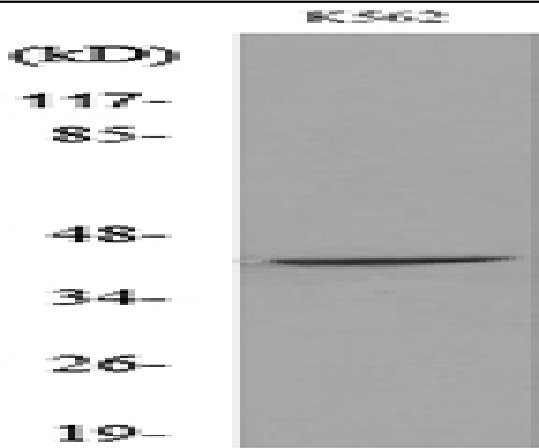
Immunohistochemical analysis of paraffin-embedded human-liver, antibody was diluted at 1:100



Immunohistochemical analysis of paraffin-embedded human-liver, antibody was diluted at 1:100



Immunohistochemical analysis of paraffin-embedded human-brain, antibody was diluted at 1:100



Western blot analysis of lysate from K562 cells, using RHAG Antibody.