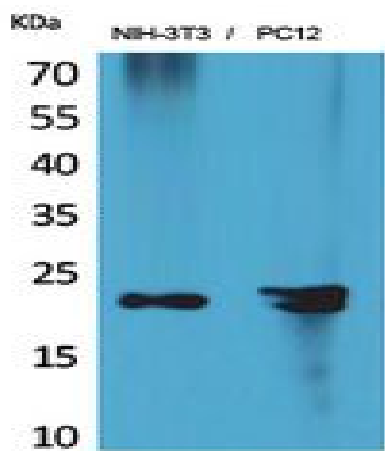


HRP-3 Polyclonal Antibody

Catalog No :	YT5484
Reactivity :	Human;Mouse;Rat
Applications :	WB;IHC;IF;ELISA
Target :	HRP-3
Gene Name :	HDGFRP3
Protein Name :	Hepatoma-derived growth factor-related protein 3
Human Gene Id :	50810
Human Swiss Prot No :	Q9Y3E1
Mouse Gene Id :	29877
Mouse Swiss Prot No :	Q9JMG7
Rat Gene Id :	252941
Rat Swiss Prot No :	Q923W4
Immunogen :	The antiserum was produced against synthesized peptide derived from the Internal region of human HDGFRP3. AA range:131-180
Specificity :	HRP-3 Polyclonal Antibody detects endogenous levels of HRP-3 protein.
Formulation :	Liquid in PBS containing 50% glycerol, 0.5% BSA and 0.02% sodium azide.
Source :	Polyclonal, Rabbit,IgG
Dilution :	WB 1:500 - 1:2000. IHC: 1:100-1:300. ELISA: 1:20000.. IF 1:50-200
Purification :	The antibody was affinity-purified from rabbit antiserum by affinity-chromatography using epitope-specific immunogen.

Concentration :	<u>1 mg/ml</u>
Storage Stability :	<u>-15°C to -25°C/1 year(Do not lower than -25°C)</u>
Observed Band :	<u>23kD</u>
Background :	<u>function:Enhances DNA synthesis and may play a role in cell proliferation.,similarity:Belongs to the HDGF family.,similarity:Contains 1 PWWP domain.,tissue specificity:Detected in testis, heart, spinal cord and brain.,</u>
Function :	<u>function:Enhances DNA synthesis and may play a role in cell proliferation.,similarity:Belongs to the HDGF family.,similarity:Contains 1 PWWP domain.,tissue specificity:Detected in testis, heart, spinal cord and brain.,</u>
Subcellular Location :	<u>Nucleus .</u>
Expression :	<u>Detected in testis, heart, spinal cord and brain.</u>

Products Images



Western Blot analysis of NIH-3T3, PC12 cells using HRP-3 Polyclonal Antibody. Secondary antibody(catalog#:RS0002) was diluted at 1:20000