

NKp44 Polyclonal Antibody

Catalog No :	YT5481
Reactivity :	Human;Rat;Mouse;
Applications :	WB;IHC;IF;ELISA
Target :	NKp44
Fields :	>>Natural killer cell mediated cytotoxicity
Gene Name :	NCR2
Protein Name :	Natural cytotoxicity triggering receptor 2
Human Gene Id :	9436
Human Swiss Prot No :	O95944
Immunogen :	The antiserum was produced against synthesized peptide derived from the Internal region of human NCR2. AA range:61-110
Specificity :	NKp44 Polyclonal Antibody detects endogenous levels of NKp44 protein.
Formulation :	Liquid in PBS containing 50% glycerol, 0.5% BSA and 0.02% sodium azide.
Source :	Polyclonal, Rabbit,IgG
Dilution :	WB 1:500 - 1:2000. IHC: 1:100-1:300. ELISA: 1:20000.. IF 1:50-200
Purification :	The antibody was affinity-purified from rabbit antiserum by affinity-chromatography using epitope-specific immunogen.
Concentration :	1 mg/ml
Storage Stability :	-15°C to -25°C/1 year(Do not lower than -25°C)
Observed Band :	44kD

Cell Pathway : Natural killer cell mediated cytotoxicity;

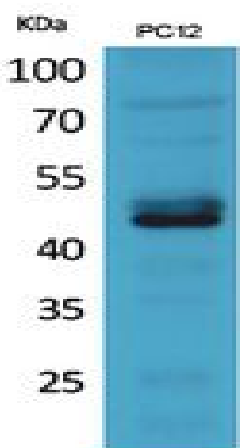
Background : function:Cytotoxicity-activating receptor that may contribute to the increased efficiency of activated natural killer (NK) cells to mediate tumor cell lysis.,similarity:Belongs to the natural cytotoxicity receptor (NCR) family.,similarity:Contains 1 Ig-like (immunoglobulin-like) domain.,subunit:Interacts with TYROBP/DAP12.,tissue specificity:Selectively expressed by activated NK cells and by in vitro cultured (i.e. activated) TCRg/d lymphoid cells.,

Function : function:Cytotoxicity-activating receptor that may contribute to the increased efficiency of activated natural killer (NK) cells to mediate tumor cell lysis.,similarity:Belongs to the natural cytotoxicity receptor (NCR) family.,similarity:Contains 1 Ig-like (immunoglobulin-like) domain.,subunit:Interacts with TYROBP/DAP12.,tissue specificity:Selectively expressed by activated NK cells and by in vitro cultured (i.e. activated) TCRg/d lymphoid cells.,

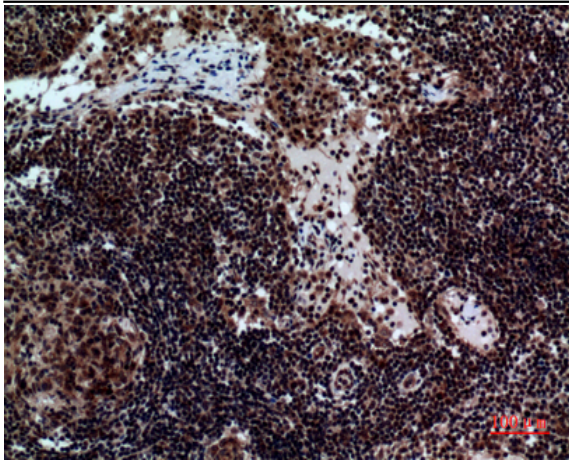
Subcellular Location : Cell membrane ; Single-pass type I membrane protein .

Expression : Selectively expressed by activated NK cells and by in vitro cultured (i.e. activated) TCRg/d lymphoid cells.

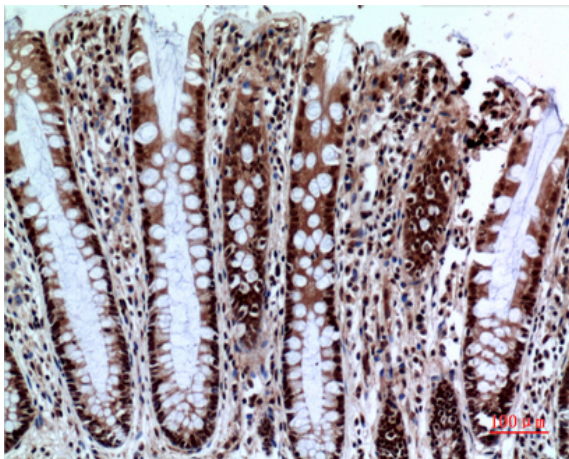
Products Images



Western Blot analysis of PC-12 cells using NKp44 Polyclonal Antibody. Secondary antibody(catalog#:RS0002) was diluted at 1:20000



Immunohistochemical analysis of paraffin-embedded human-Lymph-nodes, antibody was diluted at 1:100



Immunohistochemical analysis of paraffin-embedded human-colon, antibody was diluted at 1:100