

**CD32-B/C Polyclonal Antibody**

<b>Catalog No :</b>	YT5246
<b>Reactivity :</b>	Human
<b>Applications :</b>	WB;ELISA
<b>Target :</b>	CD32
<b>Fields :</b>	>>Phagosome;>>Osteoclast differentiation;>>B cell receptor signaling pathway;>>Fc gamma R-mediated phagocytosis;>>Staphylococcus aureus infection;>>Tuberculosis;>>Measles
<b>Gene Name :</b>	FCGR2B/FCGR2C
<b>Protein Name :</b>	Low affinity immunoglobulin gamma Fc region receptor II-b/Low affinity immunoglobulin gamma Fc region receptor II-c
<b>Human Gene Id :</b>	2213
<b>Human Swiss Prot No :</b>	P31994
<b>Immunogen :</b>	The antiserum was produced against synthesized peptide derived from the Internal region of human FCGR2B/C. AA range:141-190
<b>Specificity :</b>	CD32-B/C Polyclonal Antibody detects endogenous levels of CD32-B/C protein.
<b>Formulation :</b>	Liquid in PBS containing 50% glycerol, 0.5% BSA and 0.02% sodium azide.
<b>Source :</b>	Polyclonal, Rabbit,IgG
<b>Dilution :</b>	WB 1:500 - 1:2000. ELISA: 1:20000. Not yet tested in other applications.
<b>Purification :</b>	The antibody was affinity-purified from rabbit antiserum by affinity-chromatography using epitope-specific immunogen.
<b>Concentration :</b>	1 mg/ml
<b>Storage Stability :</b>	-15°C to -25°C/1 year(Do not lower than -25°C)

**Observed Band :** 35kD

**Cell Pathway :** B\_Cell\_Antigen;Fc gamma R-mediated phagocytosis;Systemic lupus erythematosus;

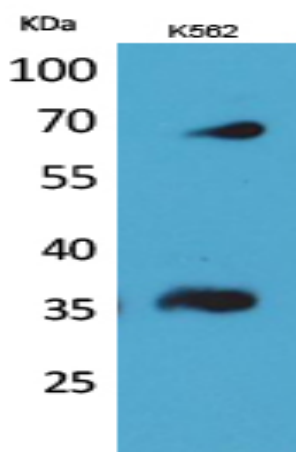
**Background :** Low affinity immunoglobulin gamma Fc region receptor II-b/Low affinity immunoglobulin gamma Fc region receptor II-c encoded by FCGR2B is a low affinity receptor for the Fc region of immunoglobulin gamma complexes. The encoded protein is involved in the phagocytosis of immune complexes and in the regulation of antibody production by B-cells. Variations in this gene may increase susceptibility to systemic lupus erythematosus (SLE). Several transcript variants encoding different isoforms have been found for this gene.

**Function :** immune response,

**Subcellular Location :** Cell membrane; Single-pass type I membrane protein.

**Expression :** Is the most broadly distributed Fc-gamma-receptor. Expressed in monocyte, neutrophils, macrophages, basophils, eosinophils, Langerhans cells, B-cells, platelets cells and placenta (endothelial cells). Not detected in natural killer cells.

## Products Images



Western Blot analysis of K562 cells using CD32-B/C Polyclonal Antibody. Secondary antibody(catalog#:RS0002) was diluted at 1:20000