

## CD7 Polyclonal Antibody

<b>Catalog No :</b>	YT5242
<b>Reactivity :</b>	Human;Mouse
<b>Applications :</b>	WB;IHC;IF;ELISA
<b>Target :</b>	CD7
<b>Fields :</b>	>>Hematopoietic cell lineage
<b>Gene Name :</b>	CD7
<b>Protein Name :</b>	T-cell antigen CD7
<b>Human Gene Id :</b>	924
<b>Human Swiss Prot No :</b>	P09564
<b>Mouse Swiss Prot No :</b>	P50283
<b>Immunogen :</b>	The antiserum was produced against synthesized peptide derived from the Internal region of human CD7. AA range:51-100
<b>Specificity :</b>	CD7 Polyclonal Antibody detects endogenous levels of CD7 protein.
<b>Formulation :</b>	Liquid in PBS containing 50% glycerol, 0.5% BSA and 0.02% sodium azide.
<b>Source :</b>	Polyclonal, Rabbit,IgG
<b>Dilution :</b>	WB 1:500 - 1:2000. IHC: 1:100-300 ELISA: 1:20000.. IF 1:50-200
<b>Purification :</b>	The antibody was affinity-purified from rabbit antiserum by affinity-chromatography using epitope-specific immunogen.
<b>Concentration :</b>	1 mg/ml
<b>Storage Stability :</b>	-15°C to -25°C/1 year(Do not lower than -25°C)

**Observed Band :** 25kD

**Cell Pathway :** Hematopoietic cell lineage;

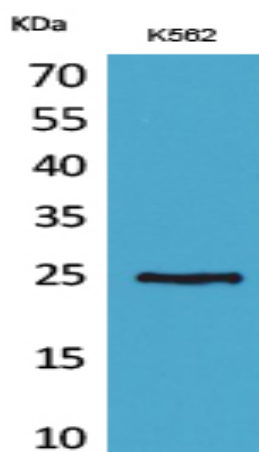
**Background :** This gene encodes a transmembrane protein which is a member of the immunoglobulin superfamily. This protein is found on thymocytes and mature T cells. It plays an essential role in T-cell interactions and also in T-cell/B-cell interaction during early lymphoid development. [provided by RefSeq, Jul 2008],

**Function :** function:Not yet known.,similarity:Contains 1 Ig-like (immunoglobulin-like) domain.,subunit:Interacts with SECTM1.,

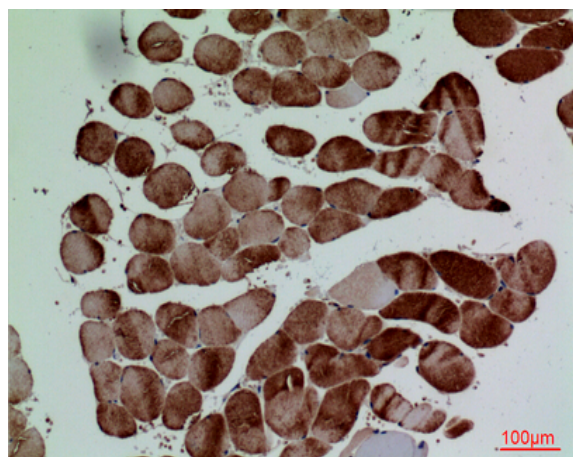
**Subcellular Location :** Membrane; Single-pass type I membrane protein.

**Expression :** Liver,Muscle,Spleen,

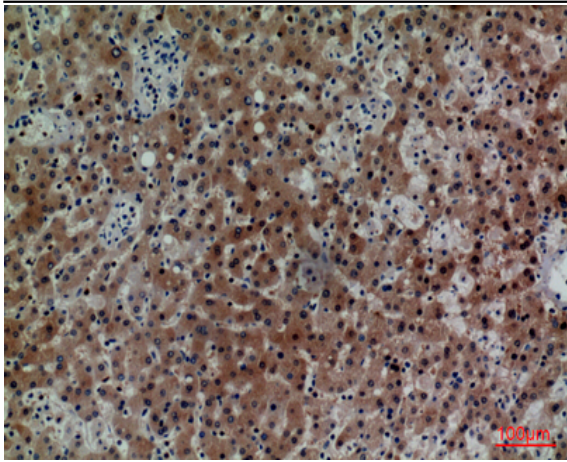
## Products Images



Western Blot analysis of K562 cells using CD7 Polyclonal Antibody. Secondary antibody(catalog#:RS0002) was diluted at 1:20000



Immunohistochemical analysis of paraffin-embedded human-muscle, antibody was diluted at 1:100



Immunohistochemical analysis of paraffin-embedded human-liver, antibody was diluted at 1:100