

## LASP-1 Polyclonal Antibody

<b>Catalog No :</b>	YT5234
<b>Reactivity :</b>	Human;Mouse;Rat
<b>Applications :</b>	WB;IHC
<b>Target :</b>	LASP-1
<b>Gene Name :</b>	LASP1
<b>Protein Name :</b>	LIM and SH3 domain protein 1
<b>Human Gene Id :</b>	3927
<b>Human Swiss Prot No :</b>	Q14847
<b>Mouse Gene Id :</b>	16796
<b>Mouse Swiss Prot No :</b>	Q61792
<b>Rat Gene Id :</b>	29278
<b>Rat Swiss Prot No :</b>	Q99MZ8
<b>Immunogen :</b>	The antiserum was produced against synthesized peptide derived from the Internal region of human LASP1. AA range:51-100
<b>Specificity :</b>	LASP-1 Polyclonal Antibody detects endogenous levels of LASP-1 protein.
<b>Formulation :</b>	Liquid in PBS containing 50% glycerol, 0.5% BSA and 0.02% sodium azide.
<b>Source :</b>	Polyclonal, Rabbit,IgG
<b>Dilution :</b>	WB 1:500-2000;IHC 1:50-300
<b>Purification :</b>	The antibody was affinity-purified from rabbit antiserum by affinity-chromatography using epitope-specific immunogen.

**Concentration :** 1 mg/ml

**Storage Stability :** -15°C to -25°C/1 year(Do not lower than -25°C)

**Observed Band :** 28kD

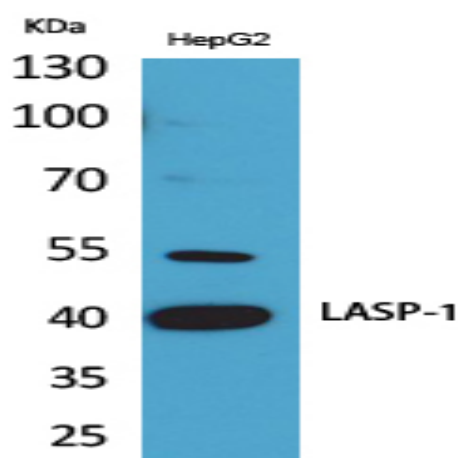
**Background :** This gene encodes a member of a subfamily of LIM proteins, characterized by a LIM motif and a domain of Src homology region 3, and also a member of the nebulin family of actin-binding proteins. The encoded protein is a cAMP and cGMP dependent signaling protein and binds to the actin cytoskeleton at extensions of the cell membrane. The encoded protein has been linked to metastatic breast cancer, hematopoietic tumors such as B-cell lymphomas, and colorectal cancer. [provided by RefSeq, Oct 2012],

**Function :** function:Plays an important role in the regulation of dynamic actin-based, cytoskeletal activities. Agonist-dependent changes in LASP1 phosphorylation may also serve to regulate actin-associated ion transport activities, not only in the parietal cell but also in certain other F-actin-rich secretory epithelial cell types.,PTM:Phosphorylated.,similarity:Contains 1 LIM zinc-binding domain.,similarity:Contains 1 SH3 domain.,similarity:Contains 2 nebulin repeats.,subcellular location:Associated with the F-actin rich cortical cytoskeleton.,subunit:Interacts with F-actin.,

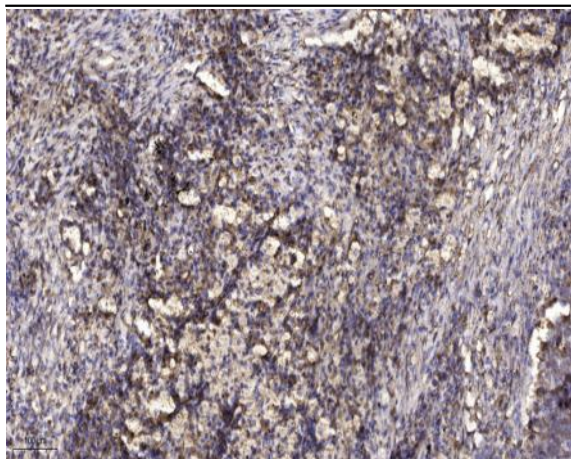
**Subcellular Location :** Cytoplasm, cell cortex . Cytoplasm, cytoskeleton . Associated with the F-actin rich cortical cytoskeleton. .

**Expression :** Epithelium,Liver,Mammary carcinoma,Platelet,Skin,T-cell,

## Products Images



Western Blot analysis of HepG2 cells using LASP-1 Polyclonal Antibody. Antibody was diluted at 1:500. Secondary antibody(catalog#:RS0002) was diluted at 1:20000



Immunohistochemical analysis of paraffin-embedded human Squamous cell carcinoma of lung. 1, Antibody was diluted at 1:200(4° overnight). 2, Tris-EDTA,pH9.0 was used for antigen retrieval. 3,Secondary antibody was diluted at 1:200(room temperature, 45min).