

## Neuropilin-2 Polyclonal Antibody

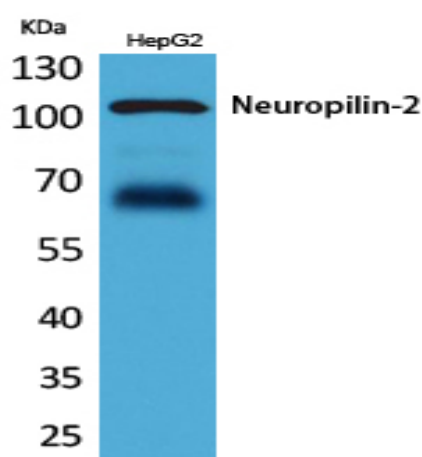
<b>Catalog No :</b>	YT5230
<b>Reactivity :</b>	Human;Mouse;Rat
<b>Applications :</b>	WB;IHC;IF;ELISA
<b>Target :</b>	Neuropilin-2
<b>Gene Name :</b>	NRP2
<b>Protein Name :</b>	Neuropilin-2
<b>Human Gene Id :</b>	8828
<b>Human Swiss Prot No :</b>	O60462
<b>Mouse Gene Id :</b>	18187
<b>Mouse Swiss Prot No :</b>	O35375
<b>Rat Gene Id :</b>	81527
<b>Rat Swiss Prot No :</b>	O35276
<b>Immunogen :</b>	The antiserum was produced against synthesized peptide derived from the Internal region of human NRP2. AA range:791-840
<b>Specificity :</b>	Neuropilin-2 Polyclonal Antibody detects endogenous levels of Neuropilin-2 protein.
<b>Formulation :</b>	Liquid in PBS containing 50% glycerol, 0.5% BSA and 0.02% sodium azide.
<b>Source :</b>	Polyclonal, Rabbit,IgG
<b>Dilution :</b>	WB 1:500 - 1:2000. IHC: 1:100-300 ELISA: 1:20000.. IF 1:50-200
<b>Purification :</b>	The antibody was affinity-purified from rabbit antiserum by affinity-chromatography using epitope-specific immunogen.

---

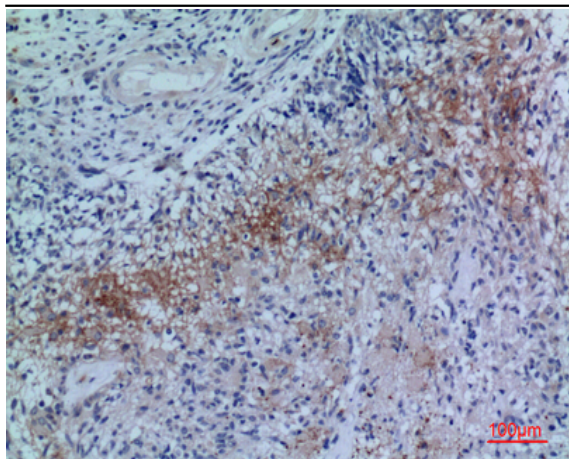
<b>Concentration :</b>	1 mg/ml
<b>Storage Stability :</b>	-15°C to -25°C/1 year(Do not lower than -25°C)
<b>Observed Band :</b>	100kD
<b>Background :</b>	This gene encodes a member of the neuropilin family of receptor proteins. The encoded transmembrane protein binds to SEMA3C protein {sema domain, immunoglobulin domain (Ig), short basic domain, secreted, (semaphorin) 3C} and SEMA3F protein {sema domain, immunoglobulin domain (Ig), short basic domain, secreted, (semaphorin) 3F}, and interacts with vascular endothelial growth factor (VEGF). This protein may play a role in cardiovascular development, axon guidance, and tumorigenesis. Multiple transcript variants encoding distinct isoforms have been identified for this gene. [provided by RefSeq, Jul 2008],
<b>Function :</b>	function:High affinity receptor for semaphorins 3C, 3F, VEGF-165 and VEGF-145 isoforms of VEGF, and the PLGF-2 isoform of PGF.,similarity:Belongs to the neuropilin family.,similarity:Contains 1 MAM domain.,similarity:Contains 2 CUB domains.,similarity:Contains 2 F5/8 type C domains.,subunit:Heterodimer with NRP1 (Probable). Binds PLXNB1.,
<b>Subcellular Location :</b>	Membrane ; Single-pass type I membrane protein .; [Isoform s9]: Secreted .
<b>Expression :</b>	Brain,Human endometrium carcinoma cell line,Liver,Mammary gland,Ovary,Prostate adenocarcino

---

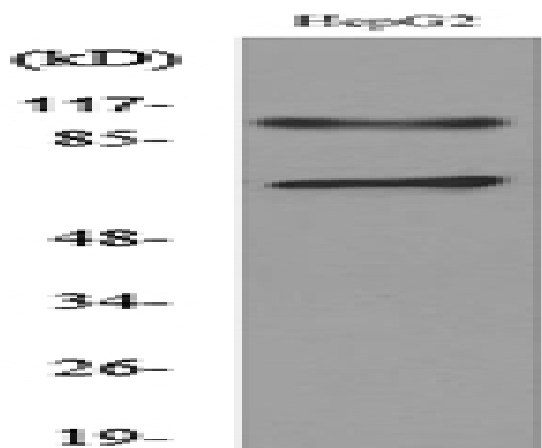
## Products Images



Western Blot analysis of HepG2 cells using Neuropilin-2 Polyclonal Antibody. Secondary antibody(catalog#:RS0002) was diluted at 1:20000



Immunohistochemical analysis of paraffin-embedded human-brain, antibody was diluted at 1:100



Western blot analysis of lysate from HepG2 cells, using NRP2 Antibody.