

DCI Polyclonal Antibody

Catalog No :	YT5229
Reactivity :	Human;Rat;Mouse;
Applications :	WB;IHC;IF;ELISA
Target :	DCI
Fields :	>>Fatty acid degradation
Gene Name :	ECI1
Protein Name :	Enoyl-CoA delta isomerase 1 mitochondrial
Human Gene Id :	1632
Human Swiss Prot No :	P42126
Mouse Swiss Prot No :	P42125
Immunogen :	Synthesized peptide derived from DCI . at AA range: c-terminal
Specificity :	DCI Polyclonal Antibody detects endogenous levels of DCI protein.
Formulation :	Liquid in PBS containing 50% glycerol, 0.5% BSA and 0.02% sodium azide.
Source :	Polyclonal, Rabbit,IgG
Dilution :	WB 1:500 - 1:2000. IHC: 1:100-300 ELISA: 1:20000.. IF 1:50-200
Purification :	The antibody was affinity-purified from rabbit antiserum by affinity-chromatography using epitope-specific immunogen.
Concentration :	1 mg/ml
Storage Stability :	-15°C to -25°C/1 year(Do not lower than -25°C)

Observed Band : 30kD

Cell Pathway : Fatty acid metabolism;

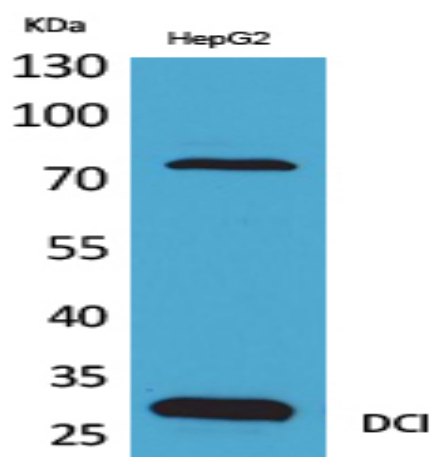
Background : This gene encodes a member of the hydratase/isomerase superfamily. The protein encoded is a key mitochondrial enzyme involved in beta-oxidation of unsaturated fatty acids. It catalyzes the transformation of 3-cis and 3-trans-enoyl-CoA esters arising during the stepwise degradation of cis-, mono-, and polyunsaturated fatty acids to the 2-trans-enoyl-CoA intermediates. Alternatively spliced transcript variants have been described. [provided by RefSeq, May 2010],

Function : catalytic activity:(3Z)-dodec-3-enoyl-CoA = (2E)-dodec-2-enoyl-CoA.,function:Able to isomerize both 3-cis and 3-trans double bonds into the 2-trans form in a range of enoyl-CoA species.,pathway:Lipid metabolism; fatty acid beta-oxidation.,similarity:Belongs to the enoyl-CoA hydratase/isomerase family.,subunit:Homotrimer.,

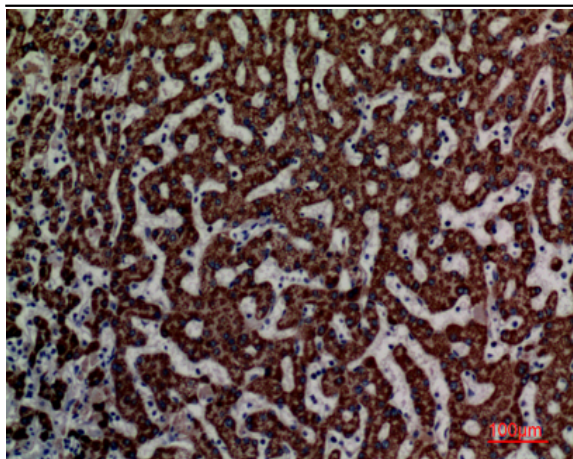
Subcellular Location : Mitochondrion matrix .

Expression : Expressed in liver (at protein level).

Products Images



Western Blot analysis of HepG2 cells using DCI Polyclonal Antibody. Secondary antibody(catalog#:RS0002) was diluted at 1:20000



Immunohistochemical analysis of paraffin-embedded human-liver, antibody was diluted at 1:100