

Lipocalin-1 Polyclonal Antibody

Catalog No :	YT5219
Reactivity :	Human
Applications :	WB;IHC;IF;ELISA
Target :	Lipocalin-1
Gene Name :	LCN1
Protein Name :	Lipocalin-1
Human Gene Id :	3933
Human Swiss Prot No :	P31025
Immunogen :	The antiserum was produced against synthesized peptide derived from the Internal region of human LCN1. AA range:11-60
Specificity :	Lipocalin-1 Polyclonal Antibody detects endogenous levels of Lipocalin-1 protein.
Formulation :	Liquid in PBS containing 50% glycerol, 0.5% BSA and 0.02% sodium azide.
Source :	Polyclonal, Rabbit,IgG
Dilution :	WB 1:500 - 1:2000. IHC: 1:100-300 ELISA: 1:20000.. IF 1:50-200
Purification :	The antibody was affinity-purified from rabbit antiserum by affinity-chromatography using epitope-specific immunogen.
Concentration :	1 mg/ml
Storage Stability :	-15°C to -25°C/1 year(Do not lower than -25°C)
Observed Band :	21kD
Background :	This gene encodes a member of the lipocalin family of small secretory proteins.

Lipocalins are extracellular transport proteins that bind to a variety of hydrophobic ligands. The encoded protein is the primary lipid binding protein in tears and is overproduced in response to multiple stimuli including infection and stress. The encoded protein may be a marker for chromosome aneuploidy as well as an autoantigen in Sjogren's syndrome. Alternatively spliced transcript variants encoding multiple isoforms have been observed for this gene, and two pseudogenes of this gene are also located on the long arm of chromosome 9. [provided by RefSeq, Nov 2011],

Function :

caution:Could be the product of a pseudogene.,function:Could play a role in taste reception. Could be necessary for the concentration and delivery of sapid molecules in the gustatory system. Can bind various ligands, with chemical structures ranging from lipids and retinoids to the macrocyclic antibiotic rifampicin and even to microbial siderophores. Exhibits an extremely wide ligand pocket.,function:May bind a variety of ligands including lipids.,similarity:Belongs to the calycin superfamily. Lipocalin family.,subunit:Homodimer (By similarity). Binds to LMBR1L which may mediate its endocytosis.,tissue specificity:Mainly expressed in lachrymal and salivary glands. Also expressed in the prostate.,

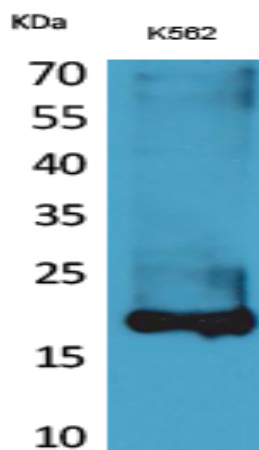
Subcellular

Secreted.

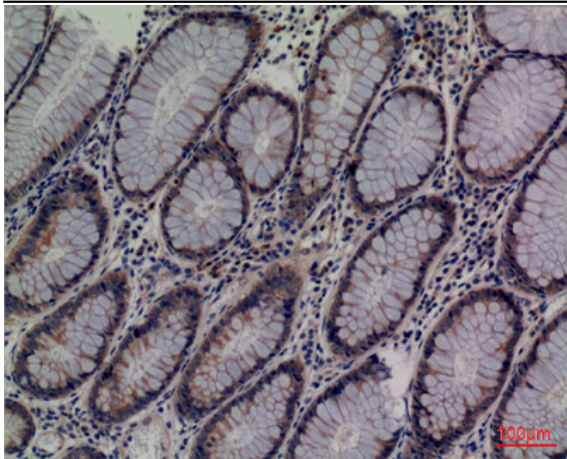
Location :**Expression :**

Mainly expressed in lachrymal and salivary glands. Also expressed in the prostate.

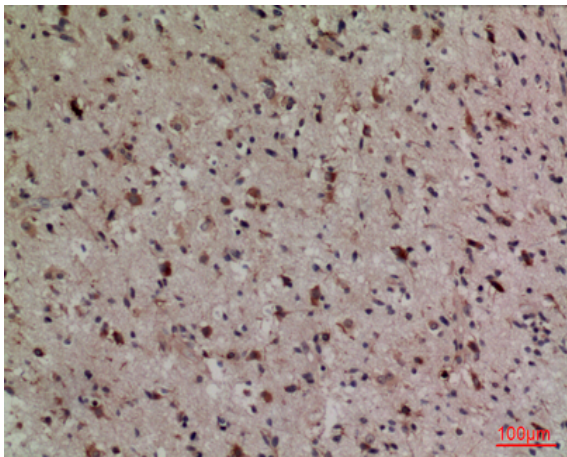
Products Images



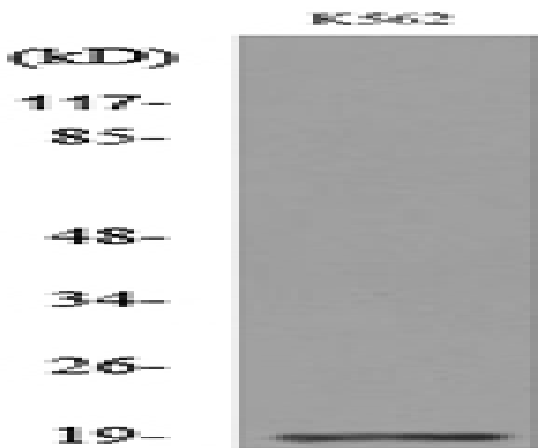
Western Blot analysis of K562 cells using Lipocalin-1 Polyclonal Antibody. Secondary antibody(catalog#:RS0002) was diluted at 1:20000



Immunohistochemical analysis of paraffin-embedded human-colon-cancer, antibody was diluted at 1:100



Immunohistochemical analysis of paraffin-embedded human-brain, antibody was diluted at 1:100



Western blot analysis of lysate from K562 cells, using LCN1 Antibody.