

IFN- ω Polyclonal Antibody

Catalog No :	YT5415
Reactivity :	Human;Rat;Mouse;
Applications :	WB;IHC;IF;ELISA
Target :	IFNW1
Fields :	>>Cytokine-cytokine receptor interaction;>>RIG-I-like receptor signaling pathway;>>JAK-STAT signaling pathway
Gene Name :	IFNW1
Protein Name :	Interferon omega-1
Human Gene Id :	3467
Human Swiss Prot No :	P05000
Immunogen :	The antiserum was produced against synthesized peptide derived from the C-terminal region of human IFNW1. AA range:146-195
Specificity :	IFN- ω Polyclonal Antibody detects endogenous levels of IFN- ω protein.
Formulation :	Liquid in PBS containing 50% glycerol, 0.5% BSA and 0.02% sodium azide.
Source :	Polyclonal, Rabbit,IgG
Dilution :	WB 1:500 - 1:2000. IHC: 1:100-1:300. ELISA: 1:20000.. IF 1:50-200
Purification :	The antibody was affinity-purified from rabbit antiserum by affinity-chromatography using epitope-specific immunogen.
Concentration :	1 mg/ml
Storage Stability :	-15°C to -25°C/1 year(Do not lower than -25°C)
Observed Band :	22kD

Cell Pathway : Cytokine-cytokine receptor interaction;RIG-I-like receptor;Jak_STAT;

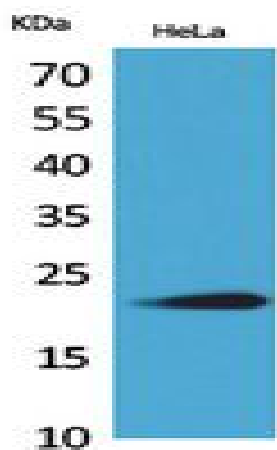
Background : The protein encoded by this gene is an interferon and possesses antiviral activity. The encoded protein binds to the interferon alpha/beta receptor but not to the interferon gamma receptor. This intronless gene has several pseudogenes spread throughout the genome. [provided by RefSeq, Nov 2015],

Function : similarity:Belongs to the alpha/beta interferon family.,

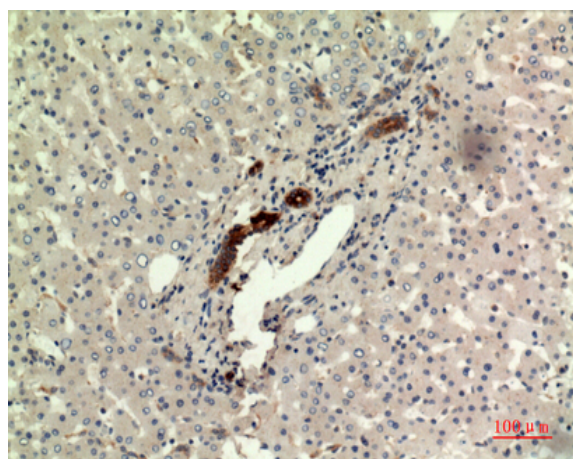
Subcellular Location : Secreted.

Expression : Leukocyte,Liver,

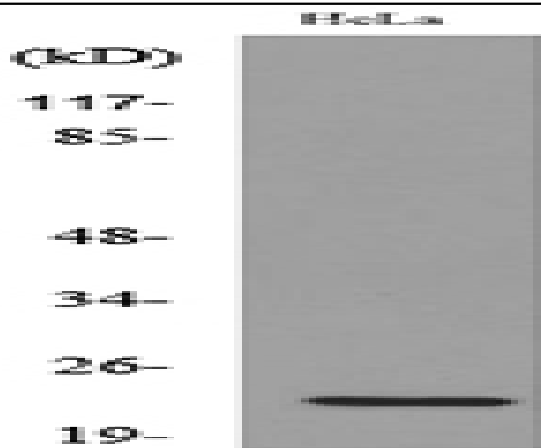
Products Images



Western Blot analysis of HeLa cells using IFN- ω Polyclonal Antibody. Secondary antibody(catalog#:RS0002) was diluted at 1:20000



Immunohistochemical analysis of paraffin-embedded human-liver, antibody was diluted at 1:100



Western blot analysis of lysate from HeLa cells, using IFNW1 Antibody.