

Cdc34 Polyclonal Antibody

Catalog No :	YT5189
Reactivity :	Human;Mouse;Rat
Applications :	WB;IHC;IF;ELISA
Target :	Cdc34
Fields :	>>Ubiquitin mediated proteolysis
Gene Name :	CDC34
Protein Name :	Ubiquitin-conjugating enzyme E2 R1
Human Gene Id :	997
Human Swiss Prot No :	P49427
Mouse Gene Id :	216150
Mouse Swiss Prot No :	Q8CFI2
Immunogen :	The antiserum was produced against synthesized peptide derived from the Internal region of human CDC34. AA range:121-170
Specificity :	Cdc34 Polyclonal Antibody detects endogenous levels of Cdc34 protein.
Formulation :	Liquid in PBS containing 50% glycerol, 0.5% BSA and 0.02% sodium azide.
Source :	Polyclonal, Rabbit,IgG
Dilution :	WB 1:500 - 1:2000. IHC: 1:100-300 ELISA: 1:20000.. IF 1:50-200
Purification :	The antibody was affinity-purified from rabbit antiserum by affinity-chromatography using epitope-specific immunogen.
Concentration :	1 mg/ml

Storage Stability : -15°C to -25°C/1 year(Do not lower than -25°C)

Observed Band : 34kD

Cell Pathway : Ubiquitin mediated proteolysis;

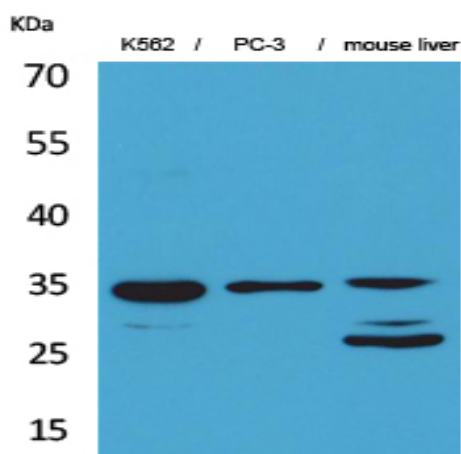
Background : The protein encoded by this gene is a member of the ubiquitin-conjugating enzyme family. Ubiquitin-conjugating enzyme catalyzes the covalent attachment of ubiquitin to other proteins. This protein is a part of the large multiprotein complex, which is required for ubiquitin-mediated degradation of cell cycle G1 regulators, and for the initiation of DNA replication. [provided by RefSeq, Jul 2008],

Function : catalytic activity:ATP + ubiquitin + protein lysine = AMP + diphosphate + protein N-ubiquityllysine.,function:Catalyzes the covalent attachment of ubiquitin to other proteins. May be involved in degradation of katenin.,pathway:Protein modification; protein ubiquitination.,similarity:Belongs to the ubiquitin-conjugating enzyme family.,subunit:Interacts with SCF (SKP1-CUL1-F-box protein) E3 ubiquitin ligase complex. When phosphorylated, interacts with beta-TrCP (BTRC),,

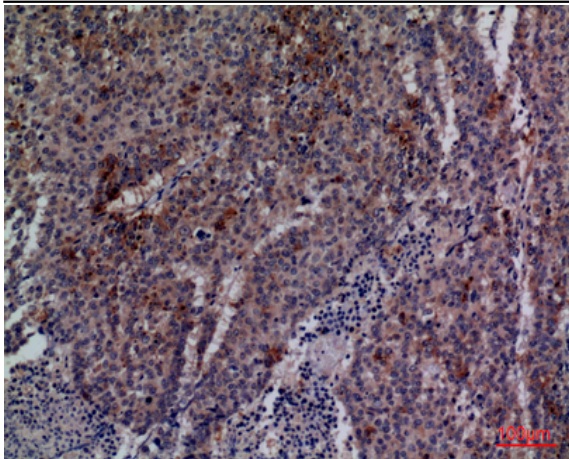
Subcellular Location : Cytoplasm. Nucleus. The phosphorylation of the C-terminal tail plays an important role in mediating nuclear localization. Colocalizes with beta-tubulin on mitotic spindles in anaphase.

Expression : Expressed in testes during spermatogenesis to regulate repression of cAMP-induced transcription.

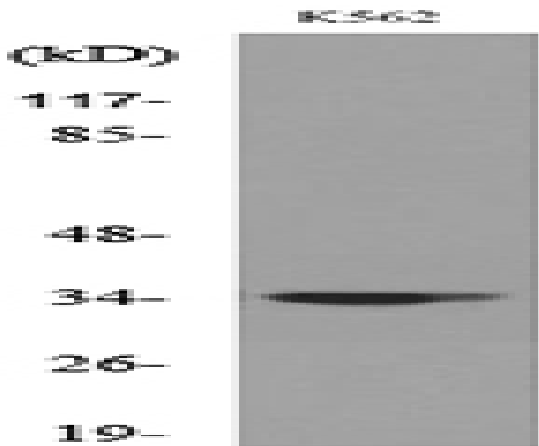
Products Images



Western Blot analysis of K562, PC-3, mouse liver cells using Cdc34 Polyclonal Antibody. Secondary antibody(catalog#:RS0002) was diluted at 1:20000 cells nucleus extracted by Minute TM Cytoplasmic and Nuclear Fractionation kit (SC-003, Inventbiotech, MN, USA).



Immunohistochemical analysis of paraffin-embedded human-lung-cancer, antibody was diluted at 1:100



Western blot analysis of lysate from K562 cells, using CDC34 Antibody.