

## MK Polyclonal Antibody

<b>Catalog No :</b>	YT5177
<b>Reactivity :</b>	Human;Rat
<b>Applications :</b>	WB;IHC;IF;ELISA
<b>Target :</b>	MK
<b>Gene Name :</b>	MDK
<b>Protein Name :</b>	Midkine
<b>Human Gene Id :</b>	4192
<b>Human Swiss Prot No :</b>	P21741
<b>Mouse Swiss Prot No :</b>	P12025
<b>Rat Gene Id :</b>	81517
<b>Rat Swiss Prot No :</b>	Q9R1S9
<b>Immunogen :</b>	The antiserum was produced against synthesized peptide derived from the Internal region of human MDK. AA range:94-143
<b>Specificity :</b>	MK Polyclonal Antibody detects endogenous levels of MK protein.
<b>Formulation :</b>	Liquid in PBS containing 50% glycerol, 0.5% BSA and 0.02% sodium azide.
<b>Source :</b>	Polyclonal, Rabbit,IgG
<b>Dilution :</b>	WB 1:500 - 1:2000. IHC: 1:100-300 ELISA: 1:20000.. IF 1:50-200
<b>Purification :</b>	The antibody was affinity-purified from rabbit antiserum by affinity-chromatography using epitope-specific immunogen.
<b>Concentration :</b>	1 mg/ml

**Storage Stability :** -15°C to -25°C/1 year(Do not lower than -25°C)

**Observed Band :** 18kD

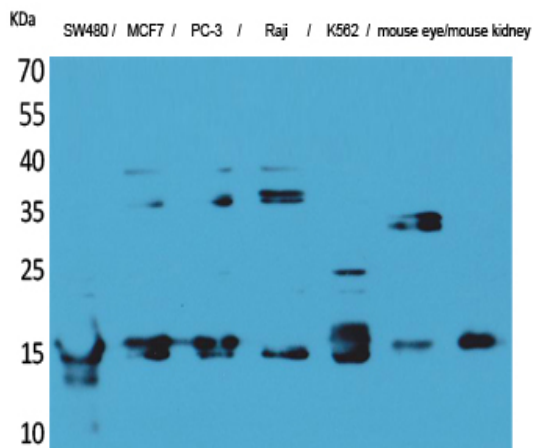
**Background :** This gene encodes a member of a small family of secreted growth factors that binds heparin and responds to retinoic acid. The encoded protein promotes cell growth, migration, and angiogenesis, in particular during tumorigenesis. This gene has been targeted as a therapeutic for a variety of different disorders. Alternatively spliced transcript variants encoding multiple isoforms have been observed. [provided by RefSeq, Jul 2012],

**Function :** function:Has heparin binding activity, and growth promoting activity. Involved in neointima formation after arterial injury, possibly by mediating leukocyte recruitment. Also involved in early fetal adrenal gland development.,induction:By heparin and retinoic acid.,similarity:Belongs to the pleiotrophin family.,subunit:Homodimer.,

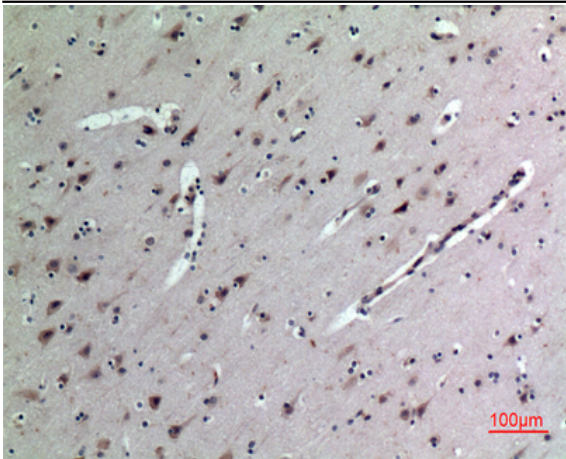
**Subcellular Location :** Secreted.

**Expression :** Expressed in various tumor cell lines. In insulinoma tissue predominantly expressed in precancerous lesions.

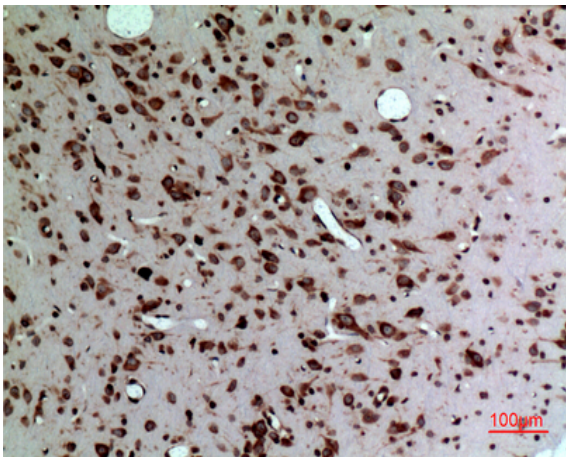
## Products Images



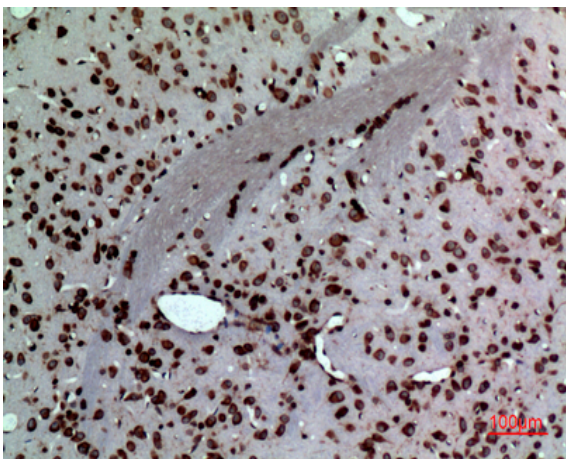
Western Blot analysis of SW480, MCF7, PC-3, Raji, K562, mouse eye, mouse kidney cells using MK Polyclonal Antibody. Secondary antibody(catalog#:RS0002) was diluted at 1:20000



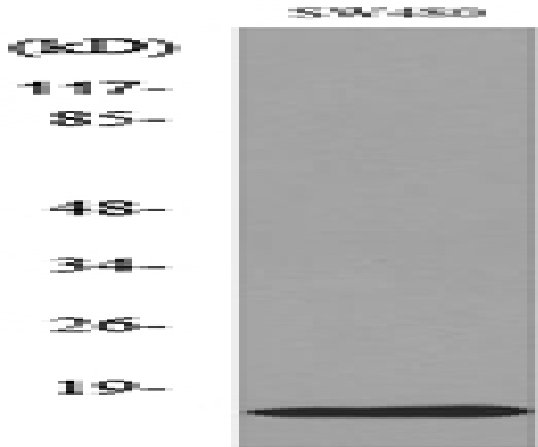
Immunohistochemical analysis of paraffin-embedded human-brain, antibody was diluted at 1:100



Immunohistochemical analysis of paraffin-embedded rat-brain, antibody was diluted at 1:100



Immunohistochemical analysis of paraffin-embedded rat-brain, antibody was diluted at 1:100



Western blot analysis of lysate from SW480 cells, using MDK Antibody.