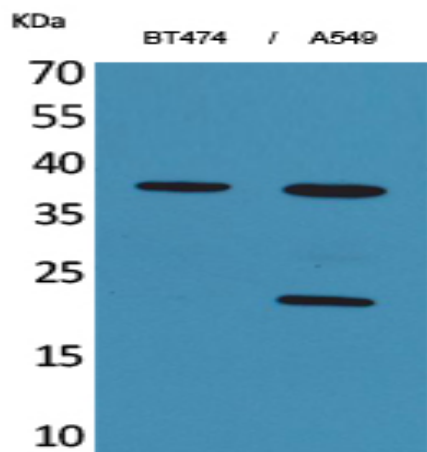


IFN- α 1 Polyclonal Antibody

Catalog No :	YT5170
Reactivity :	Human
Applications :	WB;ELISA
Target :	IFN- α 1
Fields :	>>Cytokine-cytokine receptor interaction;>>PI3K-Akt signaling pathway;>>Necroptosis;>>Toll-like receptor signaling pathway;>>NOD-like receptor signaling pathway;>>RIG-I-like receptor signaling pathway;>>Cytosolic DNA-sensing pathway;>>JAK-STAT signaling pathway;>>Natural killer cell mediated cytotoxicity;>>Alcoholic liver disease;>>Tuberculosis;>>Hepatitis C;>>Hepatitis B;>>Measles;>>Human cytomegalovirus infection;>>Influenza A;>>Human papillomavirus infection;>>Kaposi sarcoma-associated herpesvirus infection;>>Herpes simplex virus 1 infection;>>Epstein-Barr virus infection;>>Human immunodeficiency virus 1 infection;>>Coronavirus disease - COVID-19;>>Pathways in cancer;>>Autoimmune thyroid disease;>>Lipid and atherosclerosis
Gene Name :	IFNA1/IFNA13
Protein Name :	Interferon alpha-1/13
Human Gene Id :	3439
Human Swiss Prot No :	P01562
Mouse Swiss Prot No :	P01572
Immunogen :	The antiserum was produced against synthesized peptide derived from the C-terminal region of human IFNA1/13. AA range:140-189
Specificity :	IFN- α 1 Polyclonal Antibody detects endogenous levels of IFN- α 1 protein.
Formulation :	Liquid in PBS containing 50% glycerol, 0.5% BSA and 0.02% sodium azide.
Source :	Polyclonal, Rabbit,IgG

Dilution :	WB 1:500 - 1:2000. ELISA: 1:20000. Not yet tested in other applications.
Purification :	The antibody was affinity-purified from rabbit antiserum by affinity-chromatography using epitope-specific immunogen.
Concentration :	1 mg/ml
Storage Stability :	-15°C to -25°C/1 year(Do not lower than -25°C)
Observed Band :	22kD
Cell Pathway :	Cytokine-cytokine receptor interaction;Regulation of autophagy;Antigen processing and presentation;Toll_Like;RIG-I-like receptor;Cytosolic DNA-sensing pathway;Jak_STAT;Natural killer cell mediated cyt
Background :	The protein encoded by this gene is produced by macrophages and has antiviral activity. This gene is intronless and the encoded protein is secreted. [provided by RefSeq, Sep 2011],
Function :	function:Produced by macrophages, IFN-alpha have antiviral activities. Interferon stimulates the production of two enzymes: a protein kinase and an oligoadenylate synthetase.,miscellaneous:Interferons alpha-1 and alpha-13 have identical protein sequences.,polymorphism:Two forms exist; alpha-1a (shown here) and alpha-1b.,similarity:Belongs to the alpha/beta interferon family.,
Subcellular Location :	Secreted.
Expression :	Cerebellum,Leukocyte,

Products Images



Western Blot analysis of BT474, A549 cells using IFN- α 1 Polyclonal Antibody. Secondary antibody(catalog#:RS0002) was diluted at 1:20000