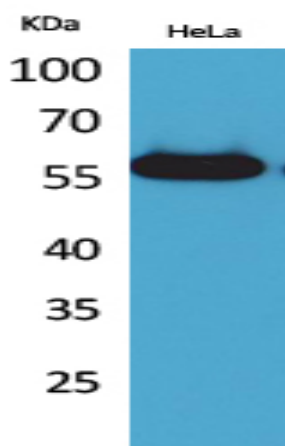


Amylase Polyclonal Antibody

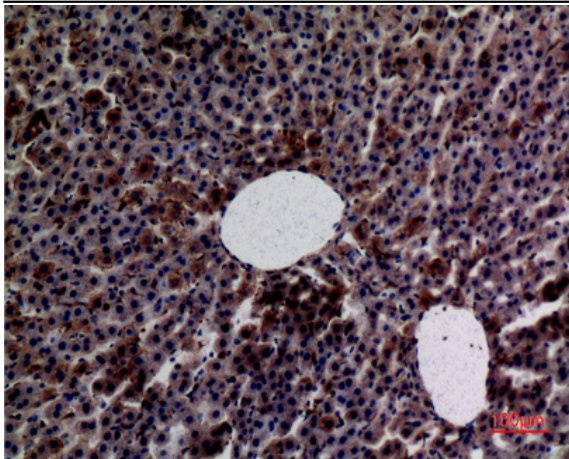
Catalog No :	YT5164
Reactivity :	Human;Mouse;Rat
Applications :	WB;IHC;IF;ELISA
Target :	Amylase
Gene Name :	AMY1A/AMY1B/AMY1C/AMY2A/AMY2B
Protein Name :	Alpha-amylase 1/Pancreatic alpha-amylase/Alpha-amylase 2B
Human Gene Id :	276
Human Swiss Prot No :	P04745
Mouse Gene Id :	11722
Mouse Swiss Prot No :	P00687
Rat Gene Id :	497039
Rat Swiss Prot No :	P00689
Immunogen :	The antiserum was produced against synthesized peptide derived from the N-terminal region of human AMY1/2. AA range:61-110
Specificity :	Amylase Polyclonal Antibody detects endogenous levels of Amylase protein.
Formulation :	Liquid in PBS containing 50% glycerol, 0.5% BSA and 0.02% sodium azide.
Source :	Polyclonal, Rabbit,IgG
Dilution :	WB 1:500 - 1:2000. IHC: 1:100-300 ELISA: 1:20000.. IF 1:50-200
Purification :	The antibody was affinity-purified from rabbit antiserum by affinity-chromatography using epitope-specific immunogen.

Concentration :	1 mg/ml
Storage Stability :	-15°C to -25°C/1 year(Do not lower than -25°C)
Observed Band :	60kD
Cell Pathway :	Starch and sucrose metabolism;
Background :	Amylases are secreted proteins that hydrolyze 1,4-alpha-glucoside bonds in oligosaccharides and polysaccharides, and thus catalyze the first step in digestion of dietary starch and glycogen. The human genome has a cluster of several amylase genes that are expressed at high levels in either salivary gland or pancreas. This gene encodes an amylase isoenzyme produced by the salivary gland. Alternative splicing results in multiple transcript variants encoding the same protein. [provided by RefSeq, Jul 2008],
Function :	catalytic activity:Endohydrolysis of (1->4)-alpha-D-glucosidic linkages in oligosaccharides and polysaccharides.,cofactor:Binds 1 calcium ion per subunit.,cofactor:Binds 1 chloride ion per subunit.,online information:Amylase entry,similarity:Belongs to the glycosyl hydrolase 13 family.,subunit:Monomer.,
Subcellular Location :	extracellular space,extracellular exosome,
Expression :	Glandular pool- thyroid,Saliva,Thyroid,

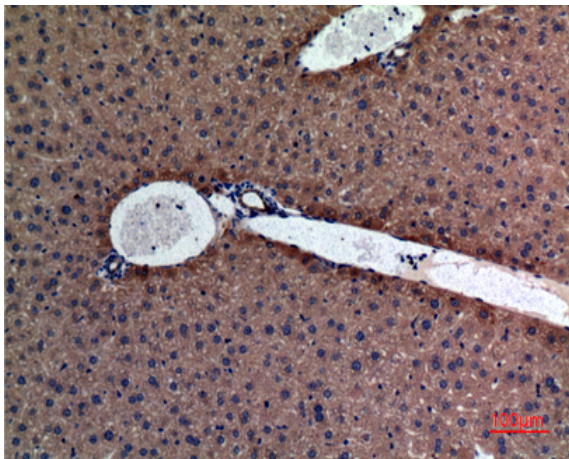
Products Images



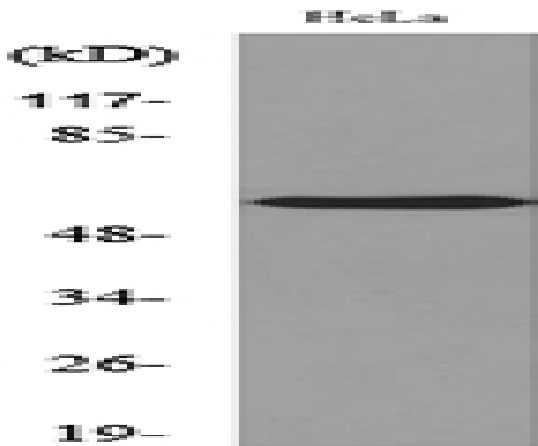
Western Blot analysis of HeLa cells using Amylase Polyclonal Antibody. Secondary antibody(catalog#:RS0002) was diluted at 1:20000



Immunohistochemical analysis of paraffin-embedded rat-liver, antibody was diluted at 1:100



Immunohistochemical analysis of paraffin-embedded mouse-liver, antibody was diluted at 1:100



Western blot analysis of lysate from HeLa cells, using AMY1/2 Antibody.