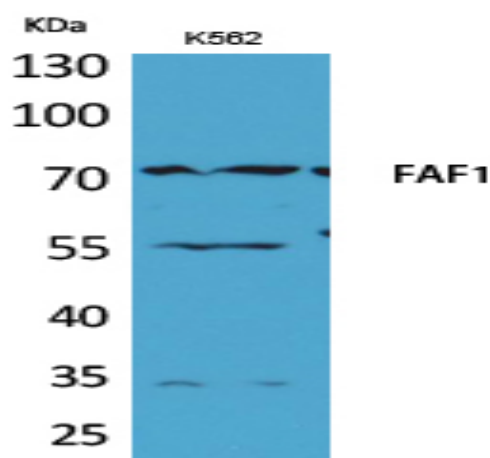


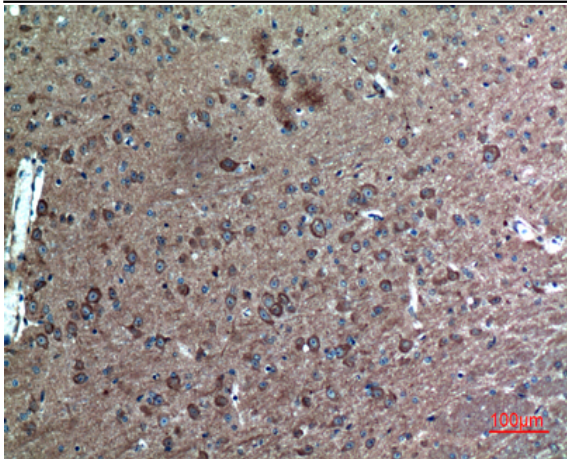
## FAF1 Polyclonal Antibody

<b>Catalog No :</b>	YT5149
<b>Reactivity :</b>	Human;Mouse;Rat
<b>Applications :</b>	WB;IHC;IF;ELISA
<b>Target :</b>	FAF1
<b>Fields :</b>	>>Necroptosis
<b>Gene Name :</b>	FAF1
<b>Protein Name :</b>	FAS-associated factor 1
<b>Human Gene Id :</b>	11124
<b>Human Swiss Prot No :</b>	Q9UNN5
<b>Mouse Gene Id :</b>	14084
<b>Mouse Swiss Prot No :</b>	P54731
<b>Rat Gene Id :</b>	140657
<b>Rat Swiss Prot No :</b>	Q924K2
<b>Immunogen :</b>	The antiserum was produced against synthesized peptide derived from the Internal region of human FAF1. AA range:461-510
<b>Specificity :</b>	FAF1 Polyclonal Antibody detects endogenous levels of FAF1 protein.
<b>Formulation :</b>	Liquid in PBS containing 50% glycerol, 0.5% BSA and 0.02% sodium azide.
<b>Source :</b>	Polyclonal, Rabbit,IgG
<b>Dilution :</b>	WB 1:500 - 1:2000. IHC: 1:100-300 ELISA: 1:20000.. IF 1:50-200

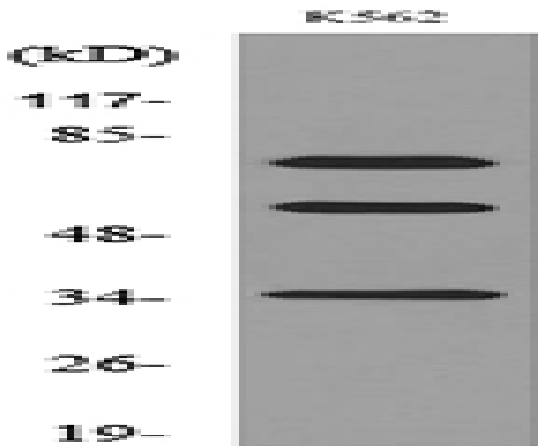
<b>Purification :</b>	The antibody was affinity-purified from rabbit antiserum by affinity-chromatography using epitope-specific immunogen.
<b>Concentration :</b>	1 mg/ml
<b>Storage Stability :</b>	-15°C to -25°C/1 year(Do not lower than -25°C)
<b>Observed Band :</b>	75kD
<b>Background :</b>	Interaction of Fas ligand (TNFSF6) with the FAS antigen (TNFRSF6) mediates programmed cell death, also called apoptosis, in a number of organ systems. The protein encoded by this gene binds to FAS antigen and can initiate apoptosis or enhance apoptosis initiated through FAS antigen. Initiation of apoptosis by the protein encoded by this gene requires a ubiquitin-like domain but not the FAS-binding domain. [provided by RefSeq, Jul 2008],
<b>Function :</b>	function:Potentiates but cannot initiate FAS-induced apoptosis.,similarity:Contains 1 UBX domain.,subunit:Specifically interacts with the cytoplasmic domain of FAS.,tissue specificity:Most abundant in testis, slightly less abundant in skeletal muscle and heart, followed by prostate, thymus, ovary, small intestine, and colon. Not detected in the peripheral blood leukocytes.,
<b>Subcellular Location :</b>	Nucleus .
<b>Expression :</b>	Most abundant in testis, slightly less abundant in skeletal muscle and heart, followed by prostate, thymus, ovary, small intestine, and colon. Not detected in the peripheral blood leukocytes.

## Products Images





Immunohistochemical analysis of paraffin-embedded mouse-brain, antibody was diluted at 1:100



Western blot analysis of lysate from K562 cells, using FAF1 Antibody.