

## Cyclophilin D Polyclonal Antibody

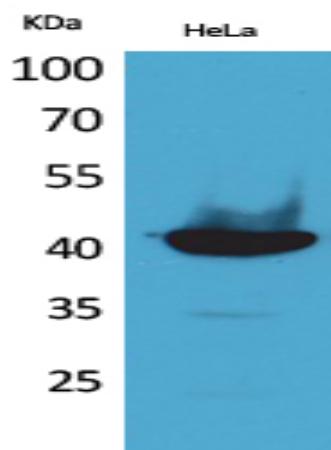
<b>Catalog No :</b>	YT5144
<b>Reactivity :</b>	Human;Mouse;Rat
<b>Applications :</b>	WB;IHC;IF;ELISA
<b>Target :</b>	Cyclophilin D
<b>Fields :</b>	>>Necroptosis;>>Cellular senescence;>>Alzheimer disease;>>Pathways of neurodegeneration - multiple diseases;>>Shigellosis
<b>Gene Name :</b>	PPID
<b>Protein Name :</b>	Peptidyl-prolyl cis-trans isomerase D
<b>Human Gene Id :</b>	5481
<b>Human Swiss Prot No :</b>	Q08752
<b>Mouse Gene Id :</b>	67738
<b>Mouse Swiss Prot No :</b>	Q9CR16
<b>Rat Gene Id :</b>	361967
<b>Rat Swiss Prot No :</b>	Q6DGG0
<b>Immunogen :</b>	The antiserum was produced against synthesized peptide derived from the C-terminal region of human PPID. AA range:321-370
<b>Specificity :</b>	Cyclophilin D Polyclonal Antibody detects endogenous levels of Cyclophilin D protein.
<b>Formulation :</b>	Liquid in PBS containing 50% glycerol, 0.5% BSA and 0.02% sodium azide.
<b>Source :</b>	Polyclonal, Rabbit,IgG
<b>Dilution :</b>	WB 1:500 - 1:2000. IHC: 1:100-300 ELISA: 1:20000.. IF 1:50-200

---

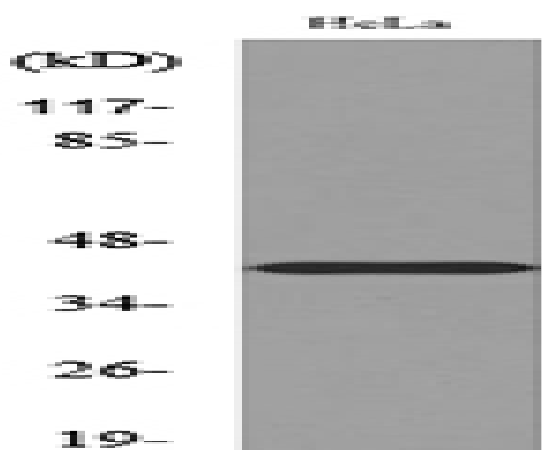
<b>Purification :</b>	The antibody was affinity-purified from rabbit antiserum by affinity-chromatography using epitope-specific immunogen.
<b>Concentration :</b>	1 mg/ml
<b>Storage Stability :</b>	-15°C to -25°C/1 year(Do not lower than -25°C)
<b>Observed Band :</b>	40kD
<b>Cell Pathway :</b>	Calcium;Parkinson's disease;Huntington's disease;
<b>Background :</b>	The protein encoded by this gene is a member of the peptidyl-prolyl cis-trans isomerase (PPIase) family. PPIases catalyze the cis-trans isomerization of proline imidic peptide bonds in oligopeptides and accelerate the folding of proteins. This protein has been shown to possess PPIase activity and, similar to other family members, can bind to the immunosuppressant cyclosporin A. [provided by RefSeq, Jul 2008],
<b>Function :</b>	catalytic activity:Peptidylproline (omega=180) = peptidylproline (omega=0).,enzyme regulation:Less sensitive to inhibition by cyclosporin A than is CYP-18.,function:PPIases accelerate the folding of proteins.,function:PPIases accelerate the folding of proteins. It catalyzes the cis-trans isomerization of proline imidic peptide bonds in oligopeptides.,online information:Cyclophilin entry,similarity:Belongs to the cyclophilin-type PPIase family.,similarity:Belongs to the cyclophilin-type PPIase family. PPIase D subfamily.,similarity:Contains 1 PPIase cyclophilin-type domain.,similarity:Contains 3 TPR repeats.,subunit:Binds ESR1.,tissue specificity:Widely expressed.,
<b>Subcellular Location :</b>	Cytoplasm . Nucleus, nucleolus . Nucleus, nucleoplasm .
<b>Expression :</b>	Widely expressed.

---

## Products Images



Western Blot analysis of HeLa cells using Cyclophilin D Polyclonal Antibody. Secondary antibody(catalog#:RS0002) was diluted at 1:20000



Western blot analysis of lysate from HeLa cells, using PPID Antibody.