

## AFP Polyclonal Antibody

|                              |  |
|------------------------------|--|
| <b>Catalog No :</b>          | YT5140   |
| <b>Reactivity :</b>          | Human;Rat;Mouse;   |
| <b>Applications :</b>        | WB;IHC;IF;ELISA  |
| <b>Target :</b>              | AFP  |
| <b>Fields :</b>              | >>Hippo signaling pathway  |
| <b>Gene Name :</b>           | AFP  |
| <b>Protein Name :</b>        | Alpha-fetoprotein  |
| <b>Human Gene Id :</b>       | 174  |
| <b>Human Swiss Prot No :</b> | P02771   |
| <b>Mouse Swiss Prot No :</b> | P02772   |
| <b>Immunogen :</b>           | The antiserum was produced against synthesized peptide derived from the Internal region of human AFP. AA range:371-420 |
| <b>Specificity :</b>         | AFP Polyclonal Antibody detects endogenous levels of AFP protein.  |
| <b>Formulation :</b>         | Liquid in PBS containing 50% glycerol, 0.5% BSA and 0.02% sodium azide.  |
| <b>Source :</b>              | Polyclonal, Rabbit,IgG   |
| <b>Dilution :</b>            | WB 1:500 - 1:2000. IHC: 1:100-300 ELISA: 1:20000.. IF 1:50-200   |
| <b>Purification :</b>        | The antibody was affinity-purified from rabbit antiserum by affinity-chromatography using epitope-specific immunogen.  |
| <b>Concentration :</b>       | 1 mg/ml  |
| <b>Storage Stability :</b>   | -15°C to -25°C/1 year(Do not lower than -25°C)   |

**Observed Band :** 70kD**Background :**

This gene encodes alpha-fetoprotein, a major plasma protein produced by the yolk sac and the liver during fetal life. Alpha-fetoprotein expression in adults is often associated with hepatoma or teratoma. However, hereditary persistence of alpha-fetoprotein may also be found in individuals with no obvious pathology. The protein is thought to be the fetal counterpart of serum albumin, and the alpha-fetoprotein and albumin genes are present in tandem in the same transcriptional orientation on chromosome 4. Alpha-fetoprotein is found in monomeric as well as dimeric and trimeric forms, and binds copper, nickel, fatty acids and bilirubin. The level of alpha-fetoprotein in amniotic fluid is used to measure renal loss of protein to screen for spina bifida and anencephaly. [provided by RefSeq, Jul 2008],

**Function :**

developmental stage:Occurs in the plasma of fetuses more than 4 weeks old, reaches the highest levels during the 12th-16th week of gestation, and drops to trace amounts after birth. The serum level in adults is usually less than 40 ng/ml. AFP occurs also at high levels in the plasma and ascitic fluid of adults with hepatoma.,function:Binds copper, nickel, and fatty acids as well as, and bilirubin less well than, serum albumin. Only a small percentage (less than 2%) of the human AFP shows estrogen-binding properties.,online information:Alpha-fetoprotein entry,PTM:Independent studies suggest heterogeneity of the N-terminal sequence of the mature protein and of the cleavage site of the signal sequence.,PTM:Sulfated.,similarity:Belongs to the ALB/AFP/VDB family.,similarity:Contains 3 albumin domains.,subunit:Dimeric and trimeric forms have been found in addition to the monomeric form.,tissue

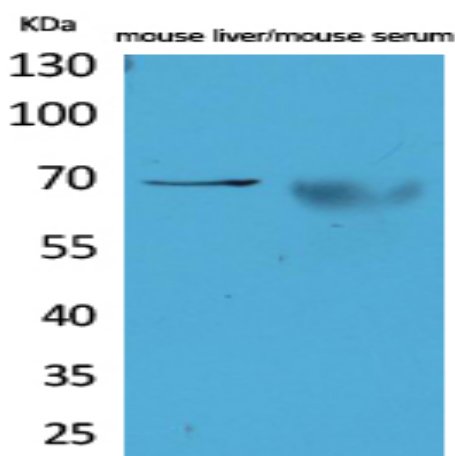
**Subcellular Location :**

Secreted.

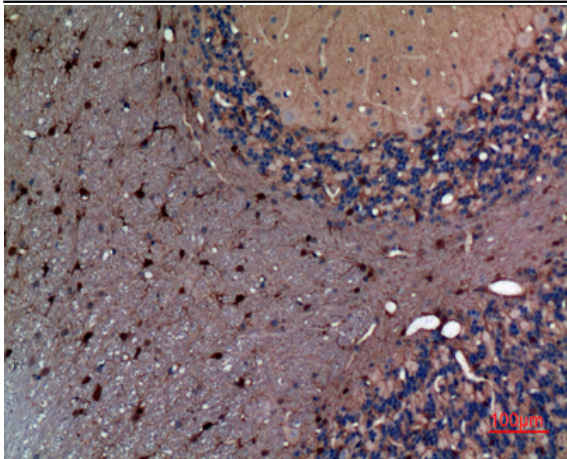
**Expression :**

Plasma. Synthesized by the fetal liver and yolk sac.

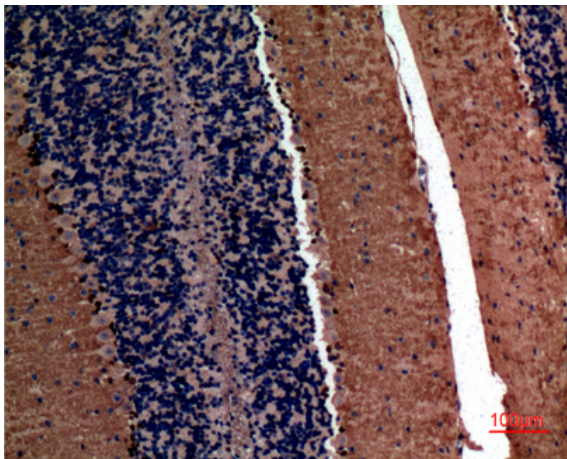
## Products Images



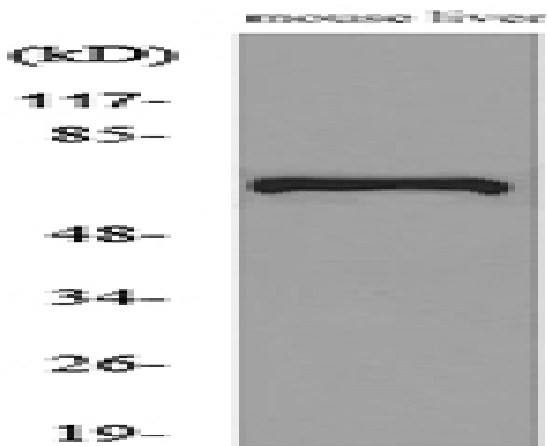
Western Blot analysis of mouse liver, mouse serum cells using AFP Polyclonal Antibody. Secondary antibody(catalog#:RS0002) was diluted at 1:20000



Immunohistochemical analysis of paraffin-embedded rat-brain, antibody was diluted at 1:100



Immunohistochemical analysis of paraffin-embedded mouse-brain, antibody was diluted at 1:100



Western blot analysis of lysate from mouse liver cells, using AFP Antibody.