

Hepassocin Polyclonal Antibody

Catalog No :	YT5127
Reactivity :	Human;Mouse;Rat
Applications :	WB;IHC;IF;ELISA
Target :	Hepassocin
Gene Name :	FGL1
Protein Name :	Fibrinogen-like protein 1
Human Gene Id :	2267
Human Swiss Prot No :	Q08830
Mouse Gene Id :	234199
Mouse Swiss Prot No :	Q71KU9
Rat Swiss Prot No :	Q5M8C6
Immunogen :	Synthesized peptide derived from the Internal region of human Hepassocin.
Specificity :	Hepassocin Polyclonal Antibody detects endogenous levels of Hepassocin protein.
Formulation :	Liquid in PBS containing 50% glycerol, 0.5% BSA and 0.02% sodium azide.
Source :	Polyclonal, Rabbit,IgG
Dilution :	WB 1:500 - 1:2000. IHC: 1:100-300 ELISA: 1:20000.. IF 1:50-200
Purification :	The antibody was affinity-purified from rabbit antiserum by affinity-chromatography using epitope-specific immunogen.
Concentration :	1 mg/ml

Storage Stability : -15°C to -25°C/1 year(Do not lower than -25°C)

Observed Band : 36kD

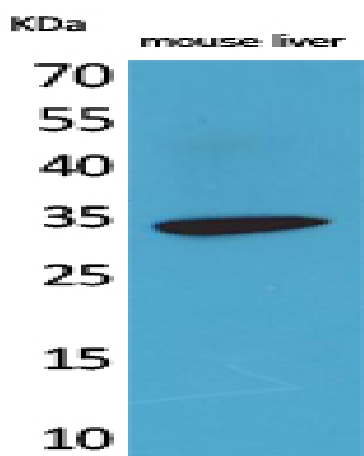
Background : fibrinogen like 1(FGL1) Homo sapiens Fibrinogen-like 1 is a member of the fibrinogen family. This protein is homologous to the carboxy terminus of the fibrinogen beta- and gamma- subunits which contains the four conserved cysteines of fibrinogens and fibrinogen related proteins. However, this protein lacks the platelet-binding site, cross-linking region and a thrombin-sensitive site which are necessary for fibrin clot formation. This protein may play a role in the development of hepatocellular carcinomas. Four alternatively spliced transcript variants encoding the same protein exist for this gene. [provided by RefSeq, Jul 2008],

Function : function:Has hepatocyte mitogenic activity.,similarity:Contains 1 fibrinogen C-terminal domain.,subunit:Homodimer.,tissue specificity:Liver specific.,

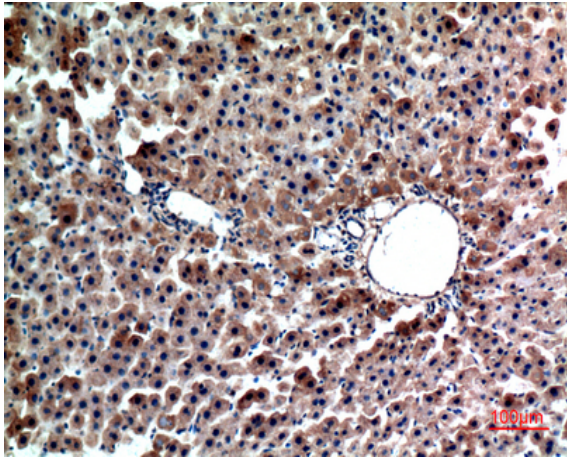
Subcellular Location : Secreted . Secreted in the blood plasma. .

Expression : Under normal conditions, liver-specific.

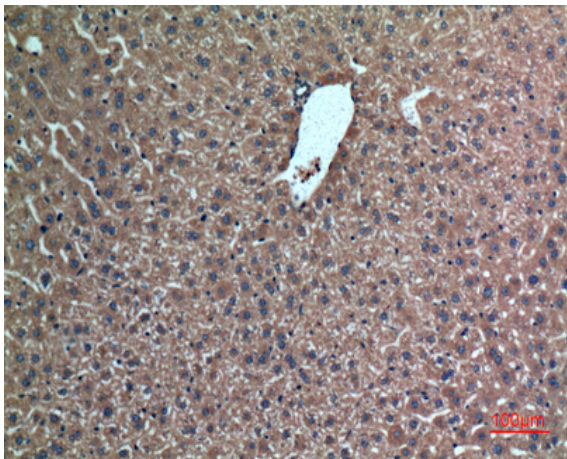
Products Images



Western Blot analysis of mouse liver cells using Hepassocin Polyclonal Antibody. Secondary antibody(catalog#:RS0002) was diluted at 1:20000



Immunohistochemical analysis of paraffin-embedded rat-liver, antibody was diluted at 1:100



Immunohistochemical analysis of paraffin-embedded mouse-liver, antibody was diluted at 1:100