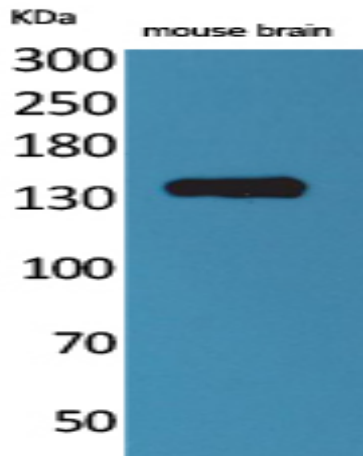


Contactin 1 Polyclonal Antibody

Catalog No :	YT5122
Reactivity :	Human;Mouse;Rat
Applications :	WB;ELISA
Target :	Contactin 1
Fields :	>>Cell adhesion molecules
Gene Name :	CNTN1
Protein Name :	Contactin-1
Human Gene Id :	1272
Human Swiss Prot No :	Q12860
Mouse Gene Id :	12805
Mouse Swiss Prot No :	P12960
Rat Gene Id :	117258
Rat Swiss Prot No :	Q63198
Immunogen :	Synthesized peptide derived from the N-terminal region of human Contactin 1.
Specificity :	Contactin 1 Polyclonal Antibody detects endogenous levels of Contactin 1 protein.
Formulation :	Liquid in PBS containing 50% glycerol, 0.5% BSA and 0.02% sodium azide.
Source :	Polyclonal, Rabbit,IgG
Dilution :	WB 1:500 - 1:2000. ELISA: 1:20000. Not yet tested in other applications.

Purification :	The antibody was affinity-purified from rabbit antiserum by affinity-chromatography using epitope-specific immunogen.
Concentration :	1 mg/ml
Storage Stability :	-15°C to -25°C/1 year(Do not lower than -25°C)
Observed Band :	113kD
Cell Pathway :	Cell adhesion molecules (CAMs);
Background :	The protein encoded by this gene is a member of the immunoglobulin superfamily. It is a glycosylphosphatidylinositol (GPI)-anchored neuronal membrane protein that functions as a cell adhesion molecule. It may play a role in the formation of axon connections in the developing nervous system. Multiple alternatively spliced transcript variants encoding different isoforms have been found for this gene. [provided by RefSeq, Dec 2011],
Function :	disease:Defects in CNTN1 are the cause of Compton-North congenital myopathy [MIM:612540]. Compton-North congenital myopathy is a familial lethal form of congenital onset muscle weakness, inherited in an autosomal-recessive fashion and characterized by a secondary loss of beta2-syntrophin and alpha-dystrobrevin from the muscle sarcolemma, central nervous system involvement, and fetal akinesia.,function:Contactins mediate cell surface interactions during nervous system development. Involved in the formation of paranodal axo-glial junctions in myelinated peripheral nerves and in the signaling between axons and myelinating glial cells via its association with CNTNAP1. Participates in oligodendrocytes generation by acting as a ligand of NOTCH1. Its association with NOTCH1 promotes NOTCH1 activation through the released notch intracellular domain (NICD) and subsequent translocation to the nucl
Subcellular Location :	[Isoform 1]: Cell membrane; Lipid-anchor, GPI-anchor; Extracellular side.; [Isoform 2]: Cell membrane; Lipid-anchor, GPI-anchor; Extracellular side.
Expression :	Strongly expressed in brain and in neuroblastoma and retinoblastoma cell lines. Lower levels of expression in lung, pancreas, kidney and skeletal muscle.

Products Images



Western Blot analysis of mouse brain cells using Contactin 1 Polyclonal Antibody. Secondary antibody(catalog#:RS0002) was diluted at 1:20000