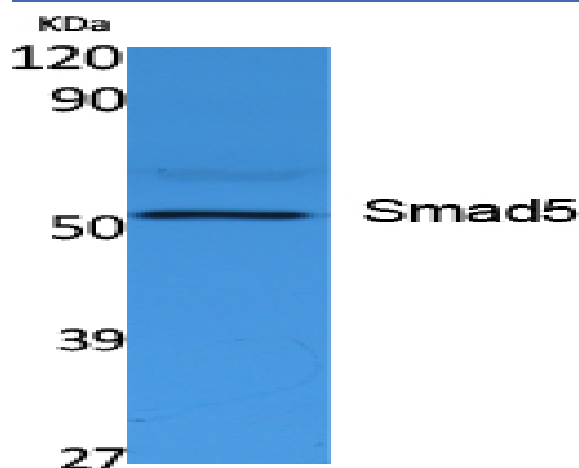


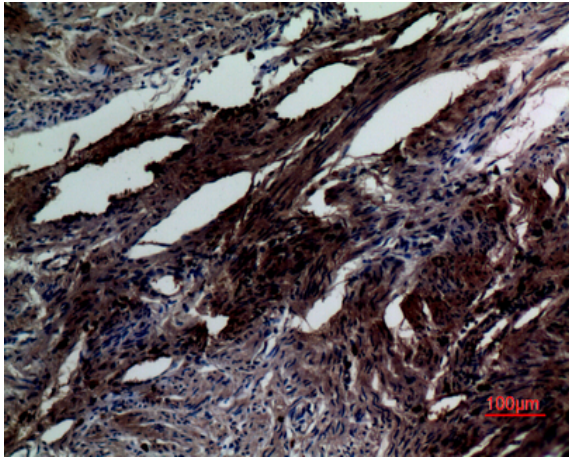
## Smad5 Polyclonal Antibody

<b>Catalog No :</b>	YT5087
<b>Reactivity :</b>	Human;Rat
<b>Applications :</b>	WB;IHC;IF;ELISA
<b>Target :</b>	Smad5
<b>Fields :</b>	>>TGF-beta signaling pathway;>>Signaling pathways regulating pluripotency of stem cells
<b>Gene Name :</b>	SMAD5
<b>Protein Name :</b>	Mothers against decapentaplegic homolog 5
<b>Human Gene Id :</b>	4090
<b>Human Swiss Prot No :</b>	Q99717
<b>Mouse Swiss Prot No :</b>	P97454
<b>Rat Gene Id :</b>	59328
<b>Rat Swiss Prot No :</b>	Q9R1V3
<b>Immunogen :</b>	Synthesized peptide derived from the Internal region of human Smad5.
<b>Specificity :</b>	Smad5 Polyclonal Antibody detects endogenous levels of Smad5 protein.
<b>Formulation :</b>	Liquid in PBS containing 50% glycerol, 0.5% BSA and 0.02% sodium azide.
<b>Source :</b>	Polyclonal, Rabbit,IgG
<b>Dilution :</b>	WB 1:500 - 1:2000. IHC: 1:100-300 ELISA: 1:40000.. IF 1:50-200
<b>Purification :</b>	The antibody was affinity-purified from rabbit antiserum by affinity-chromatography using epitope-specific immunogen.

<b>Concentration :</b>	1 mg/ml
<b>Storage Stability :</b>	-15°C to -25°C/1 year(Do not lower than -25°C)
<b>Observed Band :</b>	52kD
<b>Cell Pathway :</b>	TGF-beta;
<b>Background :</b>	The protein encoded by this gene is involved in the transforming growth factor beta signaling pathway that results in an inhibition of the proliferation of hematopoietic progenitor cells. The encoded protein is activated by bone morphogenetic proteins type 1 receptor kinase, and may be involved in cancer. Alternative splicing results in multiple transcript variants. [provided by RefSeq, Feb 2014],
<b>Function :</b>	function:Transcriptional modulator activated by BMP (bone morphogenetic proteins) type 1 receptor kinase. SMAD5 is a receptor-regulated SMAD (R-SMAD).,PTM:Phosphorylated on serine by BMP (bone morphogenetic proteins) type 1 receptor kinase.,PTM:Ubiquitin-mediated proteolysis by SMAD-specific E3 ubiquitin ligase SMURF1.,similarity:Belongs to the dwarfin/SMAD family.,similarity:Contains 1 MH1 (MAD homology 1) domain.,similarity:Contains 1 MH2 (MAD homology 2) domain.,subcellular location:Cytoplasmic in the absence of ligand. Migrates to the nucleus when complexed with SMAD4.,subunit:May form trimers with the co-SMAD SMAD4. Interacts with PEBP2-alpha subunit and SMURF1. Interacts with SUV39H1 and SUV39H2.,tissue specificity:Ubiquitous.,
<b>Subcellular Location :</b>	Cytoplasm. Nucleus. Cytoplasmic in the absence of ligand. Migrates to the nucleus when complexed with SMAD4.
<b>Expression :</b>	Ubiquitous.

## Products Images





Immunohistochemical analysis of paraffin-embedded human-uterus, antibody was diluted at 1:100