

## PSP Polyclonal Antibody

<b>Catalog No :</b>	YT5295
<b>Reactivity :</b>	Human;Rat;Mouse;
<b>Applications :</b>	WB;ELISA;IHC
<b>Target :</b>	PSP
<b>Gene Name :</b>	PSPN
<b>Protein Name :</b>	Persephin
<b>Human Gene Id :</b>	5623
<b>Human Swiss Prot No :</b>	O60542
<b>Mouse Swiss Prot No :</b>	O70300
<b>Rat Gene Id :</b>	25525
<b>Rat Swiss Prot No :</b>	O70301
<b>Immunogen :</b>	The antiserum was produced against synthesized peptide derived from the C-terminal region of human PSPN. AA range:101-150
<b>Specificity :</b>	PSP Polyclonal Antibody detects endogenous levels of PSP protein.
<b>Formulation :</b>	Liquid in PBS containing 50% glycerol, 0.5% BSA and 0.02% sodium azide.
<b>Source :</b>	Polyclonal, Rabbit,IgG
<b>Dilution :</b>	WB 1:500-2000;IHC 1:50-300; ELISA 2000-20000
<b>Purification :</b>	The antibody was affinity-purified from rabbit antiserum by affinity-chromatography using epitope-specific immunogen.
<b>Concentration :</b>	1 mg/ml

**Storage Stability :** -15°C to -25°C/1 year(Do not lower than -25°C)

**Observed Band :** 16kD

**Background :** persephin(PSPN) Homo sapiens This gene encodes a secreted ligand of the GDNF (glial cell line-derived neurotrophic factor) subfamily and TGF-beta (transforming growth factor-beta) superfamily of proteins. The encoded preproprotein is proteolytically processed to generate the mature protein. This protein signals through the RET receptor tyrosine kinase and a GPI-linked coreceptor, and promotes survival of neuronal populations. This protein may play a role in cell death, and nervous system development and function. Elevated expression of this gene has been observed in oral squamous cell carcinoma. [provided by RefSeq, Aug 2016],

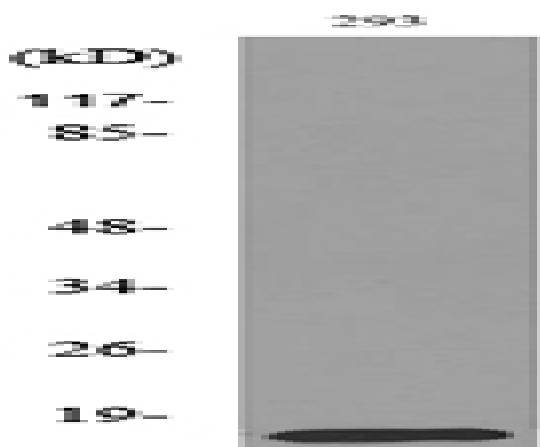
**Function :** function:Exhibits neurotrophic activity on mesencephalic dopaminergic and motor neurons.,similarity:Belongs to the TGF-beta family. GDNF subfamily.,subunit:Homodimer; disulfide-linked.,

**Subcellular Location :** Secreted.

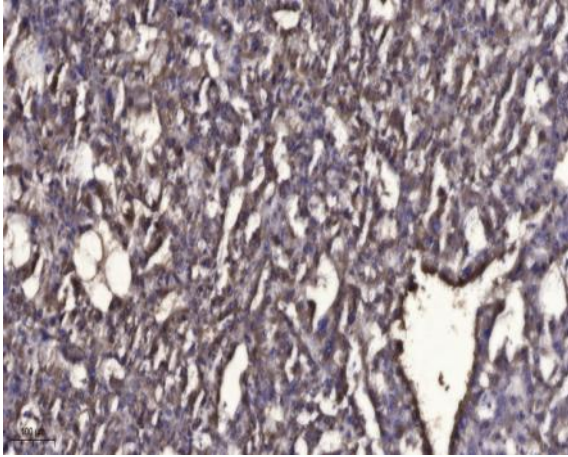
## Products Images



Western Blot analysis of 293 cells using PSP Polyclonal Antibody. Secondary antibody(catalog#:RS0002) was diluted at 1:20000



Western blot analysis of lysate from 293 cells, using PSPN Antibody.



Immunohistochemical analysis of paraffin-embedded human liver cancer. 1, Antibody was diluted at 1:200(4° overnight). 2, Tris-EDTA,pH9.0 was used for antigen retrieval. 3,Secondary antibody was diluted at 1:200(room temperature, 45min).